

TOM1L1 (Target of Myb1 Like 1 Membrane Trafficking Protein) Antibody

Mouse Monoclonal Antibody [Clone TOM1L1/4690]

Catalog No	Format	Size
10040-MSM1-P0	Purified Ab with BSA and Azide at 200ug/ml	20 ug
10040-MSM1-P1	Purified Ab with BSA and Azide at 200ug/ml	100 ug
10040-MSM1-P1ABX	Purified Ab WITHOUT BSA and Azide at 1.0mg/ml	100 ug

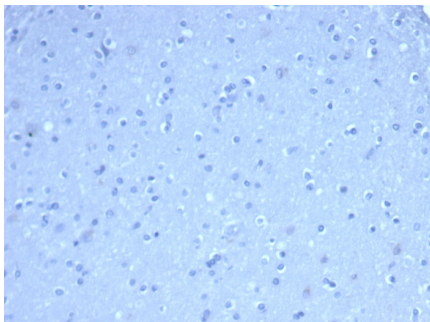
Applications	Tested Dillution	Note
Immunohistochemistry (IHC)	1-2ug/ml	30 min at RT. Staining of formalin-fixed tissues requires heating tissue sections in 10mM Tris with 1mM EDTA, pH 9.0, for 45 min at 95°C followed by cooling at RT for 20 minutes

Product Details

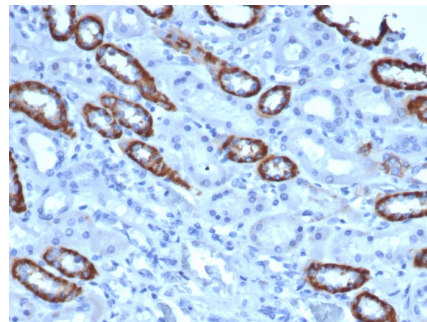
Clone	TOM1L1/4690
Gene Name	TOM1L1
Immunogen	Recombinant full-length human TOM1L1 protein
Host	Mouse
Clonality	Monoclonal
Isotype / Light Chain	IgG1 / Kappa
Mol. Weight of Antigen	53kDa.
Cellular Localization	Cytoplasm, Endosome membrane, Golgi apparatus, Golgi stack, Membrane
Species Reactivity	Human
Positive Control	Human kidney.

*Optimal dilution for a specific application should be determined.

Product Images for TOM1L1 (Target of Myb1 Like 1 Membrane Trafficking Protein) Antibody



IHC analysis of formalin-fixed, paraffin-embedded human brain. Negative tissue control using TOM1L1/4690 at 2ug/ml in PBS for 30min RT. HIER: Tris/EDTA, pH9.0, 45min. 2°C: HRP-polymer, 30min. DAB, 5min.



IHC analysis of formalin-fixed, paraffin-embedded human kidney. TOM1L1/4690 at 2ug/ml in PBS for 30min RT. HIER: Tris/EDTA, pH9.0, 45min. 2°C: HRP-polymer, 30min. DAB, 5min.

Specificity & Comments

Tom1 (target of Myb 1) is a 492 amino acid cytoplasmic protein that belongs to the Tom1 family. Widely expressed with highest expression in heart, liver, placenta and skeletal muscle, Tom1 is thought to be involved in intracellular trafficking and may be associated with the translocation of ubiquitinated proteins to early endosomes for degradation. Tom1 contains one GAT domain and one VHS domain through which it interacts and complexes with proteins such as Tollip and endofin (also known as SARA). These interactions recruit Tom1 to the endosome, allowing it to participate in the endosomal trafficking of ubiquitin-tagged proteins.

Supplied As

200ug/ml of Ab purified from Bioreactor Concentrate by Protein A/G. Prepared in 10mM PBS with 0.05% BSA & 0.05% azide. Also available WITHOUT BSA & azide at 1.0mg/ml.

Storage and Stability

Antibody with azide - store at 2 to 8 °C. Antibody without azide - store at -20 to -80 °C. Antibody is stable for 24 months. Non-hazardous. No MSDS required.

Limitations and Warranty

This antibody is available for research use only and is not approved for use in diagnosis. There are no warranties, expressed or implied, which extend beyond this description. Company is not liable for any personal injury or economic loss resulting from this product.
