

p21WAF1 (Tumor Suppressor Protein) Antibody

Mouse Monoclonal Antibody [Clone DCS-60.2]

Catalog No	Format	Size
1026-MSM2-P0	Purified Ab with BSA and Azide at 200ug/ml	20 ug
1026-MSM2-P1	Purified Ab with BSA and Azide at 200ug/ml	100 ug
1026-MSM2-P1ABX	Purified Ab WITHOUT BSA and Azide at 1.0mg/ml	100 ug

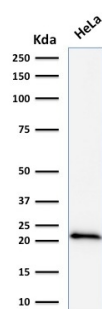
Applications	Tested Dillution	Note
Flow Cytometry (Flow)	1-2ug/million cells	
Immunofluorescence (IF)	1-3ug/ml	
Immunohistochemistry (IHC)	1-2ug/ml	30 min at RT. Staining of formalin-fixed tissues requires heating tissue sections in 10mM Tris with 1mM EDTA, pH 9.0, for 45 min at 95°C followed by cooling at RT for 20 minutes
Western Blot (WB)	2-4ug/ml	

Product Details

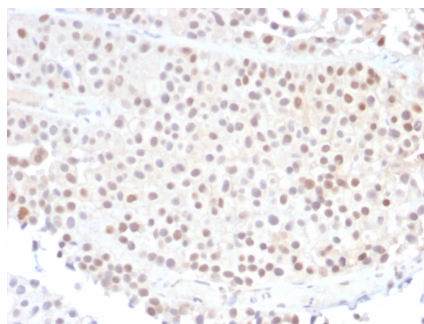
Clone	DCS-60.2
Gene Name	CDKN1A
Immunogen	Recombinant full-length human p21 protein
Host	Mouse
Clonality	Monoclonal
Isotype / Light Chain	IgG2a / Kappa
Mol. Weight of Antigen	21kDa
Cellular Localization	Cytoplasm, Nucleus
Species Reactivity	Human
Positive Control	colon or breast carcinoma., HeLa cells. Human skin

*Optimal dilution for a specific application should be determined.

Product Images for p21WAF1 (Tumor Suppressor Protein) Antibody



Western Blot Analysis of human HeLa cell lysate using p21 Mouse Monoclonal Antibody (DCS-60.2).



Formalin-fixed, paraffin-embedded human Bladder Carcinoma stained with p21 Mouse Monoclonal Antibody (DCS-60.2).

Specificity & Comments

This MAb recognizes a 21kDa protein, identified as the p21WAF1 tumor suppressor protein. This MAb is highly specific to p21 and shows no cross-reaction with other closely related mitotic inhibitors. p21WAF1 is a specific inhibitor of cdk's and a tumor suppressor involved in the pathogenesis of a variety of malignancies. The expression of this gene acts as an inhibitor of the cell cycle during G1 phase and is tightly controlled by the tumor suppressor protein p53. Its expression is induced by the wild type, but not mutant, p53 suppressor protein. Normal cells generally display a rather intense nuclear p21 expression. Loss of p21 expression has been reported in many carcinomas (gastric carcinoma, non-small cell lung carcinoma, thyroid carcinoma).

Limitations and Warranty

This antibody is available for research use only and is not approved for use in diagnosis. There are no warranties, expressed or implied, which extend beyond this description. Company is not liable for any personal injury or economic loss resulting from this product.

Supplied As

200ug/ml of Ab Purified from Bioreactor Concentrate by Protein A/G. Prepared in 10mM PBS with 0.05% BSA & 0.05% azide. Also available WITHOUT BSA & azide at 1.0mg/ml.

Storage and Stability

Antibody with azide - store at 2 to 8°C. Antibody without azide - store at -20 to -80°C. Antibody is stable for 24 months. Non-hazardous. No MSDS required.

Research Areas

Breast Cancer, Cancer, Cardiovascular, Developmental Biology, Immunology, AKT Signaling, Bladder Cancer, Colon Cancer, Cytokine Signaling, Infectious Disease, Lung Cancer, Nuclear Marker, Ovarian Cancer, Signal Transduction, Transcription Factors
