

## Carcinoembryonic Antigen (CEA) / CD66 Antibody

Mouse Monoclonal Antibody [Clone COL-1 + CEA31 + C66/261]

Catalog No	Format	Size
1048-MSM7-P0	Purified Ab with BSA and Azide at 200ug/ml	20 ug
1048-MSM7-P1	Purified Ab with BSA and Azide at 200ug/ml	100 ug
1048-MSM7-P1ABX	Purified Ab WITHOUT BSA and Azide at 1.0mg/ml	100 ug

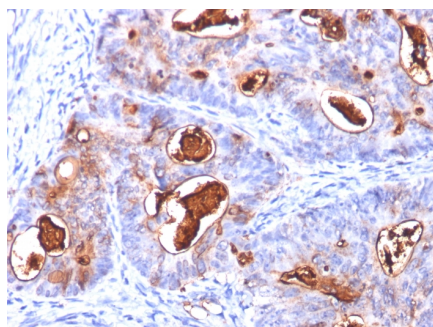
Applications	Tested Dillution	Note
Flow Cytometry (Flow)	1-2ug/million cells	
Immunofluorescence (IF)	1-3ug/ml	
Immunohistochemistry (IHC)	1-2ug/ml	30 min at RT. Staining of formalin-fixed tissues requires heating tissue sections in 10mM Tris with 1mM EDTA, pH 9.0, for 45 min at 95°C followed by cooling at RT for 20 minutes

### Product Details

<b>Clone</b>	COL-1 + CEA31 + C66/261
<b>Gene Name</b>	CEACAM5
<b>Immunogen</b>	Human colon carcinoma extract (COL-1 & CEA31); Recombinant full-length human CEA protein (C66/261)
<b>Host</b>	Mouse
<b>Clonality</b>	Monoclonal
<b>Isotype / Light Chain</b>	IgG1, IgG2a / Kappa
<b>Mol. Weight of Antigen</b>	80-200kDa
<b>Cellular Localization</b>	Apical cell membrane, Cell membrane, Cell surface
<b>Species Reactivity</b>	Human
<b>Positive Control</b>	MCF7 or 293T cells. Human colon carcinoma.

*\*Optimal dilution for a specific application should be determined.*

### Product Images for Carcinoembryonic Antigen (CEA) / CD66 Antibody



Formalin-fixed, paraffin-embedded human colon carcinoma stained with CEA Mouse Monoclonal Antibody (COL-1+CEA31+C66/261).

### **Specificity & Comments**

This antibody recognizes proteins of 80-200kDa, identified as different members of CEA family. CEA is synthesized during development in the fetal gut and is re-expressed in increased amounts in intestinal carcinomas and several other tumors. This MAb does not react with nonspecific cross-reacting antigen (NCA) and with human polymorphonuclear leucocytes. It shows no reaction with a variety of normal tissues and is suitable for staining of formalin/paraffin tissues. CEA is not found in benign glands, stroma, or malignant prostatic cells. Antibody to CEA is useful in detecting early foci of gastric carcinoma and in distinguishing pulmonary adenocarcinomas (60-70% are CEA+) from pleural mesotheliomas (rarely or weakly CEA+). Anti-CEA positivity is seen in adenocarcinomas from the lung, colon, stomach, esophagus, pancreas, gallbladder, urachus, salivary gland, ovary, and endocervix.

---

### **Limitations and Warranty**

This antibody is available for research use only and is not approved for use in diagnosis. There are no warranties, expressed or implied, which extend beyond this description. Company is not liable for any personal injury or economic loss resulting from this product.

---

### **Supplied As**

200ug/ml of Ab purified from Bioreactor Concentrate by Protein A/G. Prepared in 10mM PBS with 0.05% BSA & 0.05% azide. Also available WITHOUT BSA & azide at 1.0mg/ml.

---

### **Storage and Stability**

Antibody with azide - store at 2 to 8 °C. Antibody without azide - store at -20 to -80 °C. Antibody is stable for 24 months. Non-hazardous. No MSDS required.

---

### **Research Areas**

Hematopoietic Stem Cells

---