

CELF2 / CUGBP2 (RNA-binding protein) Antibody

Mouse Monoclonal Antibody [Clone PCR-P-CELF2-1E4]

Catalog No	Format	Size
10659-MSM1-P0	Purified Ab with BSA and Azide at 200ug/ml	20 ug
10659-MSM1-P1	Purified Ab with BSA and Azide at 200ug/ml	100 ug
10659-MSM1-P1ABX	Purified Ab WITHOUT BSA and Azide at 1.0mg/ml	100 ug

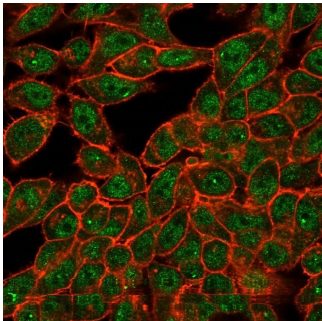
Applications	Tested Dillution	Note
Flow Cytometry (Flow)	1-2ug/million cells	
Immunofluorescence (IF)	1-3ug/ml	

Product Details

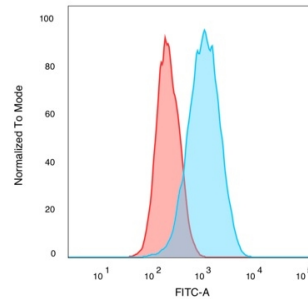
Clone	PCR-P-CELF2-1E4
Gene Name	CELF2
Immunogen	Recombinant full-length human CELF2 protein
Host	Mouse
Clonality	Monoclonal
Isotype / Light Chain	IgG2b / Kappa
Mol. Weight of Antigen	54kDa
Cellular Localization	Cytoplasm, Nucleus
Species Reactivity	Human
Positive Control	HeLa or MCF-7 cells.

*Optimal dilution for a specific application should be determined.

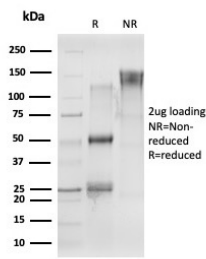
Product Images for CELF2 / CUGBP2 (RNA-binding protein) Antibody



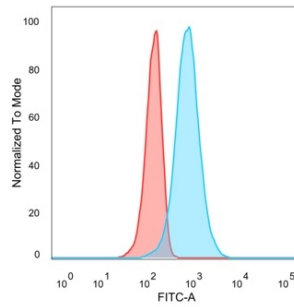
Immunofluorescence Analysis of PFA-fixed HeLa cells. CELF2 Mouse Monoclonal Antibody (PCR-P-CELF2-1E4) followed by goat anti-mouse IgG-CF488 (green). CF640A-phalloidin (red).



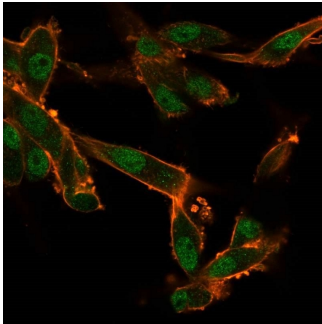
Flow Immunofluorescence Analysis of PFA-fixed MCF-7 cells. CELF2 Mouse Monoclonal Antibody (PCR-P-CELF2-1E4) followed by goat anti-mouse IgG-CF488 (green). CF640A phalloidin (red).



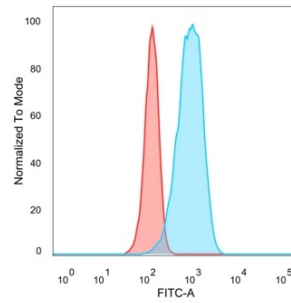
SDS-PAGE Analysis Purified CELF2 Mouse Monoclonal Antibody (PCR-CEL2-1E4) Confirmation of Purity and Integrity of Antibody.



Flow Cytometric Analysis of PFA-fixed U87 cells CELF2 Mouse Monoclonal Antibody (PCR-CEL2-1E4) followed by goat anti-mouse IgG-CF488 (blue); unstained cells (red).



Immunofluorescence Analysis of U87 cells using CELF2 Mouse Monoclonal Antibody (PCR-CEL2-1E4) followed by goat anti-mouse IgG-CF488 (green), CF640A phalloidin (red).



Flow Cytometric Analysis of PFA-fixed HeLa cells. CELF2 Mouse Monoclonal Antibody (PCR-CEL2-1E4) followed by goat anti-mouse IgG-CF488 (blue); unstained cells (red).

Specificity & Comments

Members of the CELF/BRUNOL protein family contain two N-terminal RNA recognition motif (RRM) domains, one C-terminal RRM domain, and a divergent segment of 160-230 aa between the second and third RRM domains. Members of this protein family regulate pre-mRNA alternative splicing and may also be involved in mRNA editing, and translation. Alternative splicing results in multiple transcript variants encoding different isoforms.

Supplied As

200ug/ml of Ab purified from Bioreactor Concentrate by Protein A/G. Prepared in 10mM PBS with 0.05 BSA 0.05 azide. Also available WITHOUT BSA azide at 1.0mg/ml.

Storage and Stability

Antibody with azide - store at 2 to 8C. Antibody without azide - store at -20 to -80C. Antibody is stable for 24 months. Non-hazardous. No MSDS required.

Research Areas

Cardiovascular, Nuclear Marker

Limitations and Warranty

This antibody is available for research use only and is not approved for use in diagnosis. There are no warranties, expressed or implied, which extend beyond this description. Company is not liable for any personal injury or economic loss resulting from this product.