

Recombinant HCG-beta (Pregnancy & Choriocarcinoma Marker) Antibody

Rabbit Monoclonal Antibody [Clone HCGb/7201R]

Catalog No	Format	Size
1082-RBM11-P0	Purified Ab with BSA and Azide at 200ug/ml	20 ug
1082-RBM11-P1	Purified Ab with BSA and Azide at 200ug/ml	100 ug
1082-RBM11-P1ABX	Purified Ab WITHOUT BSA and Azide at 1.0mg/ml	100 ug

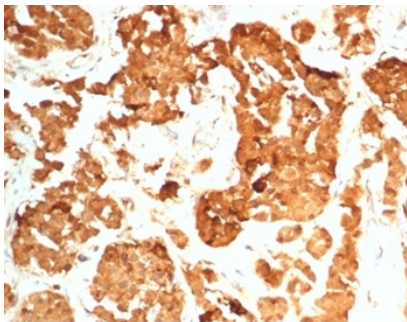
Applications	Tested Dillution	Note
Immunohistochemistry (IHC)	1-2ug/ml	30 min at RT. Staining of formalin-fixed tissues requires heating tissue sections in 10mM Tris with 1mM EDTA, pH 9.0, for 45 min at 95°C followed by cooling at RT for 20 minutes

Product Details

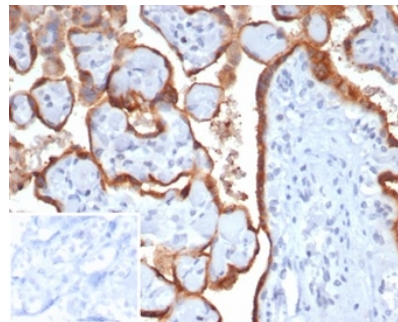
Clone	HCGb/7201R
Gene Name	CGB3, CGB5, CGB8, NA
Immunogen	Recombinant full-length human CGB protein
Host	Rabbit
Clonality	Monoclonal
Isotype / Light Chain	IgG / Kappa
Mol. Weight of Antigen	22kDa
Cellular Localization	N/A
Species Reactivity	Human
Positive Control	Human placenta.

*Optimal dilution for a specific application should be determined.

Product Images for Recombinant HCG-beta (Pregnancy & Choriocarcinoma Marker) Antibody



IHC analysis of formalin-fixed, paraffin-embedded human tonsil. Negative tissue control using HCGb/7512R at 2ug/ml in PBS for 30min RT. HIER: Tris/EDTA, pH9.0, 45min. 2°C: HRP-polymer, 30min. DAB, 5min.



Formalin-fixed, paraffin-embedded human placenta stained with HCGb Recombinant Rabbit Monoclonal Antibody (HCGb/7512R). HIER: Tris/EDTA, pH9.0, 45min. 2°C: HRP-polymer, 30min. DAB, 5min.

Specificity & Comments

Human chorionic gonadotropin antibody (hCG) is a glycoprotein hormone synthesized in syncytiotrophoblastic cells of placenta and in certain trophoblastic tumors. The hormone-specific alpha chains have molecular weights of 13 kDa. HCG is found in moles and choriocarcinoma, chorionic components of germ cell tumors, and syncytiotrophoblast like cells in seminoma/dysgerminoma and embryonal carcinoma. In diagnostic pathology, hCG is a useful marker for classification of germ cell tumors, identification of extragonadal germ cell tumors.

Supplied As

200ug/ml of Ab purified from Bioreactor Concentrate by Protein A/G. Prepared in 10mM PBS with 0.05% BSA & 0.05% azide. Also available WITHOUT BSA & azide at 1.0mg/ml.

Storage and Stability

Antibody with azide - store at 2 to 8 °C. Antibody without azide - store at -20 to -80 °C. Antibody is stable for 24 months. Non-hazardous. No MSDS required.

Research Areas

Transcription Factors

Limitations and Warranty

This antibody is available for research use only and is not approved for use in diagnosis. There are no warranties, expressed or implied, which extend beyond this description. Company is not liable for any personal injury or economic loss resulting from this product.
