

## Recombinant HCG-beta (Pregnancy & Choriocarcinoma Marker) Antibody

Rabbit Monoclonal Antibody [Clone HCGb/1996R]

Catalog No	Format	Size
1082-RBM6-P0	Purified Ab with BSA and Azide at 200ug/ml	20 ug
1082-RBM6-P1	Purified Ab with BSA and Azide at 200ug/ml	100 ug
1082-RBM6-P1ABX	Purified Ab WITHOUT BSA and Azide at 1.0mg/ml	100 ug

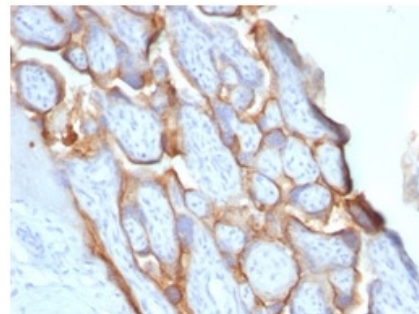
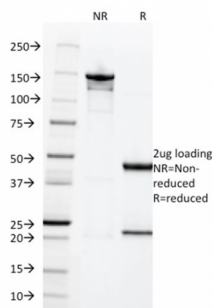
Applications	Tested Dillution	Note
Immunohistochemistry (IHC)	1-2ug/ml	30 min at RT. Staining of formalin-fixed tissues requires heating tissue sections in 10mM Tris with 1mM EDTA, pH 9.0, for 45 min at 95°C followed by cooling at RT for 20 minutes

### Product Details

<b>Clone</b>	HCGb/1996R
<b>Gene Name</b>	CGB3, CGB5, CGB8, NA
<b>Immunogen</b>	Recombinant full-length hCG beta protein
<b>Host</b>	Rabbit
<b>Clonality</b>	Monoclonal
<b>Isotype / Light Chain</b>	IgG / Kappa
<b>Mol. Weight of Antigen</b>	22kDa
<b>Cellular Localization</b>	N/A
<b>Species Reactivity</b>	Human
<b>Positive Control</b>	JAR or TT cells. Placenta.

\*Optimal dilution for a specific application should be determined.

### Product Images for Recombinant HCG-beta (Pregnancy & Choriocarcinoma Marker) Antibody



SDS-PAGE Analysis of Purified HCG-beta Rabbit Recombinant Monoclonal Antibody (HCGb/1996R). Confirmation of Purity and Integrity of Antibody.

Formalin-fixed, paraffin-embedded human placenta stained with HCG-beta Rabbit Recombinant Monoclonal Antibody (HCGb/1996R).

### **Specificity & Comments**

This MAb reacts with a protein of 22kDa, identified as beta sub-unit of HCG. It does not cross react with the alpha sub-unit. HCG is a glycoprotein, which is secreted in large quantities by normal trophoblasts. It is present only in trace amounts in non-pregnant urine and sera but rises sharply during pregnancy. HCG is composed of two non-identical, non-covalently linked polypeptide chains designated as the subunit is identical to that of thyroid stimulating hormone (TSH) follicle stimulating hormone (FSH), and luteinizing hormone (LH). hCG MAb detects cells and tumors of trophoblastic origin such as choriocarcinoma. Large cell carcinoma and adenocarcinoma of the lung demonstrate anti-hCG positivity in 90% and 60% of cases respectively. 20% of lung squamous cell carcinomas are positive. hCG expression by non-trophoblastic tumors may indicate aggressive behavior.

---

### **Limitations and Warranty**

This antibody is available for research use only and is not approved for use in diagnosis. There are no warranties, expressed or implied, which extend beyond this description. Company is not liable for any personal injury or economic loss resulting from this product.

---

### **Supplied As**

200ug/ml of Ab Purified from Bioreactor Concentrate by Protein A/G. Prepared in 10mM PBS with 0.05% BSA & 0.05% azide. Also available WITHOUT BSA & azide at 1.0mg/ml.

---

### **Storage and Stability**

Antibody with azide - store at 2 to 8°C. Antibody without azide - store at -20 to -80°C. Antibody is stable for 24 months. Non-hazardous. No MSDS required.

---

### **Research Areas**

Transcription Factors

---