

Ubiquitin-conjugating Enzyme E2C / UBCH10 Antibody

Mouse Monoclonal Antibody [Clone CPTC-UBE2C-1]

Catalog No	Format	Size
11065-MSM1-P0	Purified Ab with BSA and Azide at 200ug/ml	20 ug
11065-MSM1-P1	Purified Ab with BSA and Azide at 200ug/ml	100 ug
11065-MSM1-P1ABX	Purified Ab WITHOUT BSA and Azide at 1.0mg/ml	100 ug

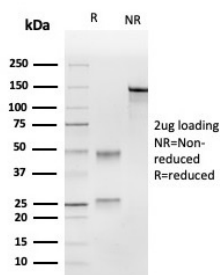
Applications	Tested Dillution	Note
Immunohistochemistry (IHC)	1-2ug/ml	30 min at RT. Staining of formalin-fixed tissues requires heating tissue sections in 10mM Tris with 1mM EDTA, pH 9.0, for 45 min at 95°C followed by cooling at RT for 20 minutes

Product Details

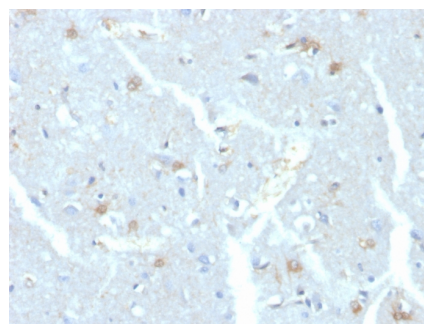
Clone	CPTC-UBE2C-1
Gene Name	UBE2C
Immunogen	Recombinant human full-length UBE2C protein
Host	Mouse
Clonality	Monoclonal
Isotype / Light Chain	IgG2b / Kappa
Mol. Weight of Antigen	20kDa
Species Reactivity	Human
Positive Control	HeLa, Jurkat or A431 cells. Human tonsil or placenta tissue.

*Optimal dilution for a specific application should be determined.

Product Images for Ubiquitin-conjugating Enzyme E2C / UBCH10 Antibody



SDS-PAGE Analysis of Purified UBE2C Mouse Monoclonal Antibody (CPTC-UBE2C-1). Confirmation of Integrity and Purity of Antibody.



Formalin-fixed, paraffin-embedded human brain stained with UBE2C Mouse Monoclonal Antibody (CPTC-UBE2C-1)

Specificity & Comments

The ubiquitin (Ub) pathway involves three sequential enzymatic steps that facilitate the conjugation of Ub and Ub-like molecules to specific protein substrates. The first step requires the ATP-dependent activation of the Ub C-terminus and the assembly of multi-Ub chains by the Ub-activating enzyme known as the E1 component. The Ub chain is then conjugated to the Ubconjugating enzyme (E2) to generate an intermediate Ub-E2 complex. The Ub-ligase (E3) then catalyzes the transfer of Ub from E2 to the appropriate protein substrate. UBE2C, also designated UBCH10 in human, is an E2 ubiquitin conjugating enzyme for the anaphase promoting complex (APC), which coordinates mitosis and G1 by sequentially promoting the degradation of key cell-cycle regulators. UBE2C is overexpressed in many different types of cancers and may be a potential therapeutic target.

Supplied As

200ug/ml of Ab purified from Bioreactor Concentrate by Protein A/G. Prepared in 10mM PBS with 0.05% BSA & 0.05% azide. Also available WITHOUT BSA & azide at 1.0mg/ml.

Storage and Stability

Antibody with azide - store at 2 to 8°C. Antibody without azide - store at -20 to -80°C. Antibody is stable for 24 months. Non-hazardous. No MSDS required.

Research Areas

Immunology, Infectious Disease, Transcription Factors

Limitations and Warranty

This antibody is available for research use only and is not approved for use in diagnosis. There are no warranties, expressed or implied, which extend beyond this description. Company is not liable for any personal injury or economic loss resulting from this product.
