

## Chromogranin A / CHGA (Neuroendocrine Marker) Antibody

Mouse Monoclonal Antibody [Clone LK2H10 + PHE5 + CGA/414]

Catalog No	Format	Size
1113-MSM5-P0	Purified Ab with BSA and Azide at 200ug/ml	20 ug
1113-MSM5-P1	Purified Ab with BSA and Azide at 200ug/ml	100 ug
1113-MSM5-P1ABX	Purified Ab WITHOUT BSA and Azide at 1.0mg/ml	100 ug

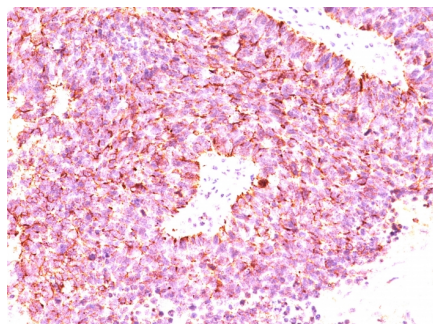
Applications	Tested Dillution	Note
Immunohistochemistry (IHC)	1-2ug/ml	30 min at RT. Staining of formalin-fixed tissues requires heating tissue sections in 10mM Tris with 1mM EDTA, pH 9.0, for 45 min at 95°C followed by cooling at RT for 20 minutes

### Product Details

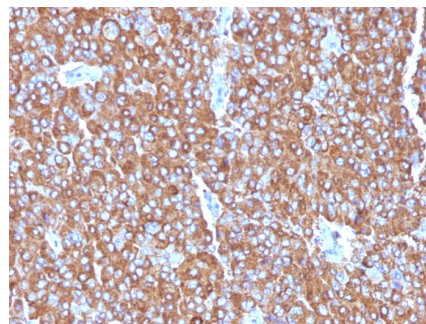
<b>Clone</b>	LK2H10 + PHE5 + CGA/414
<b>Gene Name</b>	CHGA
<b>Immunogen</b>	Human pheochromocytoma (LK2H10 & PHE5) & recombinant human chromogranin A protein (CGA414)
<b>Host</b>	Mouse
<b>Clonality</b>	Monoclonal
<b>Isotype / Light Chain</b>	IgG1 / Kappa
<b>Mol. Weight of Antigen</b>	68-75kDa
<b>Cellular Localization</b>	Cytoplasmic vesicle, Neuronal dense core vesicle, Secreted, Secretory vesicle
<b>Species Reactivity</b>	Human, Monkey, Mouse, Pig, Rat
<b>Positive Control</b>	bowel, pancreas or pheochromocytoma., PC12 cells. Adrenal gland, Thyroid

\*Optimal dilution for a specific application should be determined.

### Product Images for Chromogranin A / CHGA (Neuroendocrine Marker) Antibody



Formalin-fixed, paraffin-embedded human Small Cell Lung Carcinoma stained with Chromogranin A Monoclonal Antibody (LK2H10+PHE5+CGA414)



Formalin-fixed, paraffin-embedded human Adrenal Gland stained with Chromogranin A Monoclonal Antibody (LK2H10+PHE5+CGA414)

### Specificity & Comments

Chromogranin A is present in neuroendocrine cells throughout the body, including the neuroendocrine cells of the large and small intestine, adrenal medulla and pancreatic islets. It is an excellent marker for carcinoid tumors, pheochromocytomas, paragangliomas, and other neuroendocrine tumors. Co-expression of chromogranin A and neuron specific enolase (NSE) is common in neuroendocrine neoplasms. Reportedly, co-expression of certain keratins and chromogranin indicates neuroendocrine lineage. The presence of strong anti-chromogranin staining and absence of anti-keratin staining should raise the possibility of paraganglioma. The co-expression of chromogranin and NSE is typical of neuroendocrine neoplasms. Most pituitary adenomas and prolactinomas readily express chromogranin.

2 Union Square, Union City, CA 94587, Tel: 1-866-2-NEOBIO (1-866-263-6246) —  
orders@NeoBiotechnologies.com, www.NeoBiotechnologies.com

### Supplied As

200ug/ml of Ab Purified from Bioreactor Concentrate by Protein A/G. Prepared in 10mM PBS with 0.05% BSA & 0.05% azide. Also available WITHOUT BSA & azide at 1.0mg/ml.

### Storage and Stability

Antibody with azide - store at 2 to 8°C. Antibody without azide - store at -20 to -80°C. Antibody is stable for 24 months. Non-hazardous. No MSDS required.

### Research Areas

Cardiovascular, Immunology

## Limitations and Warranty

This antibody is available for research use only and is not approved for use in diagnosis. There are no warranties, expressed or implied, which extend beyond this description. Company is not liable for any personal injury or economic loss resulting from this product.

---