

## Adipophilin / Perilipin-2 (Marker of Lipid Accumulation) Antibody

Mouse Monoclonal Antibody [Clone ADFP/1494]

Catalog No	Format	Size
123-MSM4-P0	Purified Ab with BSA and Azide at 200ug/ml	20 ug
123-MSM4-P1	Purified Ab with BSA and Azide at 200ug/ml	100 ug
123-MSM4-P1ABX	Purified Ab WITHOUT BSA and Azide at 1.0mg/ml	100 ug

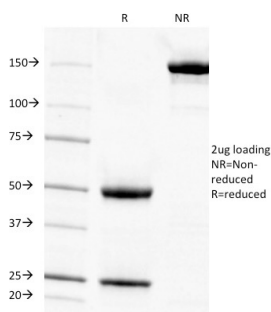
Applications	Tested Dillution	Note
Immunohistochemistry (IHC)	1-2ug/ml	30 min at RT. Staining of formalin-fixed tissues requires heating tissue sections in 10mM Tris with 1mM EDTA, pH 9.0, for 45 min at 95°C followed by cooling at RT for 20 minutes

### Product Details

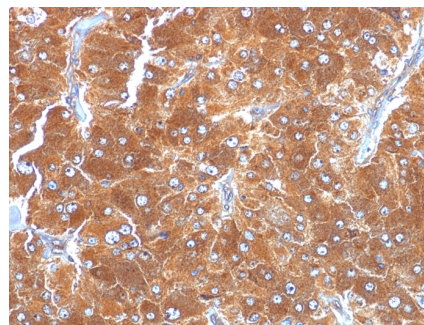
<b>Clone</b>	ADFP/1494
<b>Gene Name</b>	PLIN2
<b>Immunogen</b>	Recombinant fragment (around aa 249-376) of human Adipophilin (ADFP) protein (exact sequence is proprietary)
<b>Host</b>	Mouse
<b>Clonality</b>	Monoclonal
<b>Isotype / Light Chain</b>	IgG2b / Kappa
<b>Mol. Weight of Antigen</b>	48kDa
<b>Cellular Localization</b>	Lipid droplet, Membrane
<b>Species Reactivity</b>	Human
<b>Positive Control</b>	Adrenal gland or Cerebellum., HepG2 or JAR cells. Liver

\*Optimal dilution for a specific application should be determined.

### Product Images for Adipophilin / Perilipin-2 (Marker of Lipid Accumulation) Antibody



SDS-PAGE Analysis Purified Adipophilin Mouse Monoclonal Antibody (ADFP/1494). Confirmation of Integrity and Purity of Antibody.



Formalin-fixed, paraffin-embedded human Adrenal stained with Adipophilin Mouse Monoclonal Antibody (ADFP/1494).

### Specificity & Comments

Recognizes a protein of 48kDa, which is identified as Adipophilin. It belongs to the perilipin family, members of which coat intracellular lipid storage droplets. This protein is associated with the lipid globule surface membrane material, and maybe involved in development and maintenance of adipose tissue. However, it is not restricted to adipocytes as previously thought, but is found in a wide range of cultured cell lines, including fibroblasts, endothelial and epithelial cells, and tissues, such as lactating mammary gland, adrenal cortex, Sertoli and Leydig cells, and hepatocytes in alcoholic liver cirrhosis, suggesting that it may serve as a marker of lipid accumulation in diverse cell types and diseases.

### Supplied As

200ug/ml of Ab Purified from Bioreactor Concentrate by Protein A/G. Prepared in 10mM PBS with 0.05% BSA & 0.05% azide. Also available WITHOUT BSA & azide at 1.0mg/ml.

### Storage and Stability

Antibody with azide - store at 2 to 8°C. Antibody without azide - store at -20 to -80°C. Antibody is stable for 24 months. Non-hazardous. No MSDS required.

### Research Areas

Cardiovascular

## Limitations and Warranty

This antibody is available for research use only and is not approved for use in diagnosis. There are no warranties, expressed or implied, which extend beyond this description. Company is not liable for any personal injury or economic loss resulting from this product.

---