

## Carboxypeptidase A1 / CPA1 (Pancreatic Cancer Marker) Antibody

Mouse Monoclonal Antibody [Clone CPA1/2714]

Catalog No	Format	Size
1357-MSM4-P0	Purified Ab with BSA and Azide at 200ug/ml	20 ug
1357-MSM4-P1	Purified Ab with BSA and Azide at 200ug/ml	100 ug
1357-MSM4-P1ABX	Purified Ab WITHOUT BSA and Azide at 1.0mg/ml	100 ug

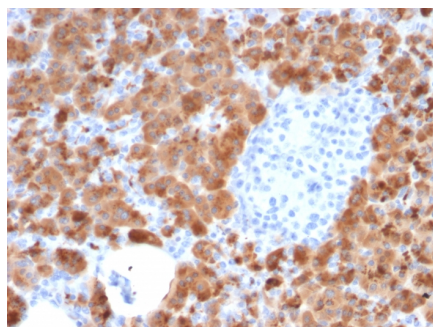
Applications	Tested Dillution	Note
Immunohistochemistry (IHC)	1-2ug/ml	30 min at RT. Staining of formalin-fixed tissues requires heating tissue sections in 10mM Tris with 1mM EDTA, pH 9.0, for 45 min at 95°C followed by cooling at RT for 20 minutes
Western Blot (WB)	2-4ug/ml	

### Product Details

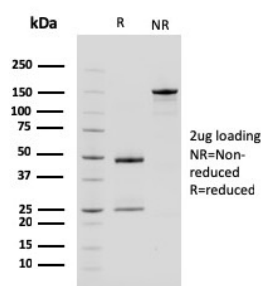
<b>Clone</b>	CPA1/2714
<b>Gene Name</b>	CPA1
<b>Immunogen</b>	Recombinant full-length human CPA1 protein
<b>Host</b>	Mouse
<b>Clonality</b>	Monoclonal
<b>Isotype / Light Chain</b>	IgG1 / Kappa
<b>Mol. Weight of Antigen</b>	47kDa
<b>Cellular Localization</b>	Secreted
<b>Species Reactivity</b>	Dog, Human
<b>Positive Control</b>	Pancreas. Pancreas tissue lysate.

\*Optimal dilution for a specific application should be determined.

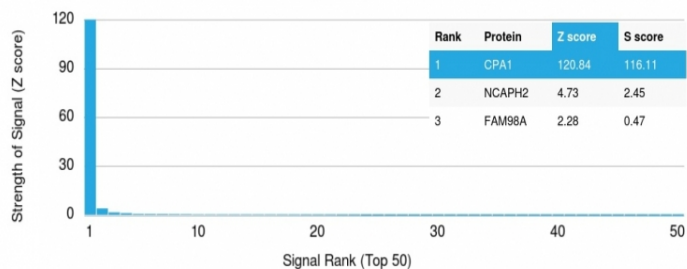
### Product Images for Carboxypeptidase A1 / CPA1 (Pancreatic Cancer Marker) Antibody



Formalin-fixed, paraffin-embedded human Pancreas stained with Carboxypeptidase A1 / CPA1 Mouse Monoclonal Antibody (CPA1/2714).

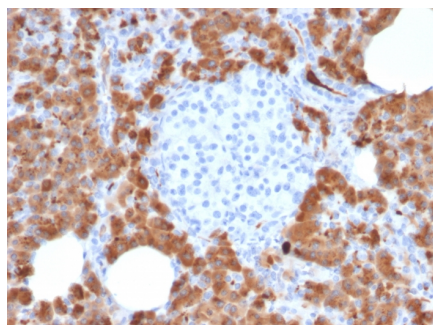
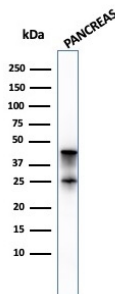


SDS-PAGE Analysis Purified Carboxypeptidase A1 / CPA1 Mouse Monoclonal Antibody (CPA1/2714). Confirmation of Purity and Integrity of Antibody



Analysis of Protein Array containing more than 19,000 full-length human proteins using Carboxypeptidase A1 / CPA1 Mouse Monoclonal Antibody (CPA1/2714). Z- and S-Score: The Z-score represents the strength of a signal that a monoclonal antibody (MAb) (in combination with a fluorescently-tagged anti-IgG secondary antibody) produces when binding to a particular protein on the HuProt™ array. Z-scores are described in units of standard deviations (SD's) above the mean value of all signals generated on that array. If targets on HuProt™ are arranged in descending order of the Z-score, the S-score is the difference (also in units of SD's) between the Z-score. S-score therefore represents the relative target specificity of a MAb to its intended target. A MAb is considered to be specific to its intended target, if the MAb has an S-score of at least 2.5. For example, if a MAb binds to protein X with a Z-score of 43 and to protein Y with a Z-score of 14, then the S-score for the binding of that MAb to protein X is equal to 29.

Western Blot Analysis of pancreatic tissue lysate using Carboxypeptidase A1 / CPA1 Mouse Monoclonal Antibody (CPA1/2714).



Formalin-fixed, paraffin-embedded human Pancreas stained with Carboxypeptidase A1 / CPA1 Mouse Monoclonal Antibody (CPA1/2714).

### Specificity & Comments

Human pancreatic procarboxypeptidase A exists as three different active forms, two of which are designated carboxypeptidase A1 (CPA1) and carboxypeptidase A2 (CPA2). CPA1, also known as CPA, is a 419 amino acid secreted monomeric protein that is highly expressed in pancreatic tissue. Functioning as a pancreatic exopeptidase, CPA1 uses zinc as a cofactor to catalyze the release of C-terminal amino acids from a variety of proteins, thereby playing a key role in protein digestion and degradation. Via its catalytic activity, CPA1 is also thought to be involved in zymogen (proenzyme) inhibition, probably functioning to block enzyme activation pathways. Abnormal levels of CPA1 are associated with pancreatic cancer, suggesting a possible role in either tumor progression or tumor suppression events.

### Limitations and Warranty

This antibody is available for research use only and is not approved for use in diagnosis. There are no warranties, expressed or implied, which extend beyond this description. Company is not liable for any personal injury or economic loss resulting from this product.

### Supplied As

200ug/ml of Ab Purified from Bioreactor Concentrate by Protein A/G. Prepared in 10mM PBS with 0.05% BSA & 0.05% azide. Also available WITHOUT BSA & azide at 1.0mg/ml.

### Storage and Stability

Antibody with azide - store at 2 to 8°C. Antibody without azide - store at -20 to -80°C. Antibody is stable for 24 months. Non-hazardous. No MSDS required.

### Research Areas

Mast Cell Marker