

GM-CSF (Granulocyte/Macrophage – Colony Stimulating Factor) Antibody

Rat Monoclonal Antibody [Clone BVD2-21C11]

Catalog No	Format	Size
1437-RTM1-P0	Purified Ab with BSA and Azide at 200ug/ml	20 ug
1437-RTM1-P1	Purified Ab with BSA and Azide at 200ug/ml	100 ug
1437-RTM1-P1ABX	Purified Ab WITHOUT BSA and Azide at 1.0mg/ml	100 ug

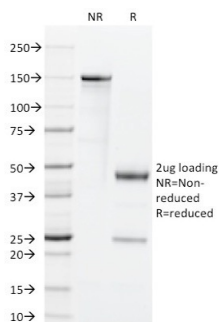
Applications	Tested Dillution	Note
Flow Cytometry (Flow)	1-2ug/million cells	
Immunofluorescence (IF)	1-3ug/ml	
Immunohistochemistry (IHC)	1-2ug/ml	30 min at RT. Staining of formalin-fixed tissues requires heating tissue sections in 10mM Tris with 1mM EDTA, pH 9.0, for 45 min at 95°C followed by cooling at RT for 20 minutes
Western Blot (WB)	2-4ug/ml	

Product Details

Clone	BVD2-21C11
Gene Name	CSF2
Immunogen	Recombinant human GM-CSF protein
Host	Rat
Clonality	Monoclonal
Isotype / Light Chain	IgG2a / Kappa
Mol. Weight of Antigen	22kDa
Cellular Localization	Secreted
Species Reactivity	Cynomolgus Monkey, Human, Rhesus Monkey
Positive Control	Lymph node or tonsil.

*Optimal dilution for a specific application should be determined.

Product Images for GM-CSF (Granulocyte/Macrophage – Colony Stimulating Factor) Antibody



SDS-PAGE Analysis of Purified GM-CSF Rat Monoclonal Antibody (BVD2-21C11). Confirmation of Purity and Integrity of Antibody.

Specificity & Comments

Granulocyte/macrophage - Colony-stimulating factor (GM-CSF) is a hematopoietic factor that is produced by activated T-cells, B-cells, mast cells, macrophages, fibroblasts, and endothelial cells. In addition to supporting colony formation of granulocyte/macrophage progenitors, GM-CSF is a growth factor for erythroid, megakaryocyte, and eosinophil progenitors.

Supplied As

200ug/ml of Ab Purified from Bioreactor Concentrate by Protein A/G. Prepared in 10mM PBS with 0.05% BSA & 0.05% azide. Also available WITHOUT BSA & azide at 1.0mg/ml.

Storage and Stability

Antibody with azide - store at 2 to 8°C. Antibody without azide - store at -20 to -80°C. Antibody is stable for 24 months. Non-hazardous. No MSDS required.

Research Areas

AKT Signaling, Cardiovascular, Cytokine Signaling, Hematopoietic Stem Cells, Immunology, Signal Transduction, Transcription Factors

Limitations and Warranty

This antibody is available for research use only and is not approved for use in diagnosis. There are no warranties, expressed or implied, which extend beyond this description. Company is not liable for any personal injury or economic loss resulting from this product.
