

## Catenin, beta (p120) Antibody

Mouse Monoclonal Antibody [Clone 9F2]

Catalog No	Format	Size
1499-MSM6-P0	Purified Ab with BSA and Azide at 200ug/ml	20 ug
1499-MSM6-P1	Purified Ab with BSA and Azide at 200ug/ml	100 ug
1499-MSM6-P1ABX	Purified Ab WITHOUT BSA at 1.0mg/ml	100 ug

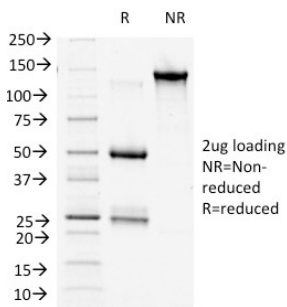
Applications	Tested Dillution	Note
Flow Cytometry (Flow)	1-2ug/million cells	
Immunofluorescence (IF)	1-3ug/ml	
Western Blot (WB)	2-4ug/ml	

### Product Details

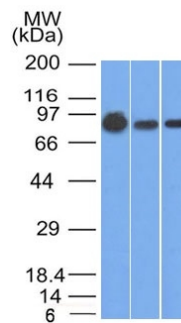
<b>Clone</b>	9F2
<b>Gene Name</b>	CTNNB1
<b>Immunogen</b>	Recombinant chicken $\gamma$ -catenin
<b>Host</b>	Mouse
<b>Clonality</b>	Monoclonal
<b>Isotype / Light Chain</b>	IgG1 / Kappa
<b>Mol. Weight of Antigen</b>	92kDa
<b>Cellular Localization</b>	Adherens junction, Cell junction, Cell membrane, Centrosome, Cilium basal body, Cytoplasm, Cytoskeleton, Microtubule organizing center, Nucleus, Spindle pole, Synapse
<b>Species Reactivity</b>	Chicken, Cow, Dog, Human
<b>Positive Control</b>	A431, A549 or MCF-7 cells. Breast carcinoma.

\*Optimal dilution for a specific application should be determined.

### Product Images for Catenin, beta (p120) Antibody



SDS-PAGE Analysis of Purified Catenin, beta Mouse Monoclonal Antibody (9F2). Confirmation of Purity and Integrity of Antibody.



Western Blot of A431, A549 and MCF-7 cell lysates using Catenin, beta Mouse Monoclonal Antibody (9F2)

### **Specificity & Comments**

This MAb recognizes a protein of 92kDa, which is identified as beta-catenin. It shows no cross-reaction with gamma-catenin (also known as plakoglobin). The catenins, alpha, beta and gamma bind to the highly conserved, intracellular cytoplasmic tail of E-cadherin. Together, the catenin/cadherin complexes play an important role mediating cellular adhesion. Alpha-catenin was initially described as an E-cadherin-associated protein, and has been shown to associate with other members of the cadherin family, such as N-cadherin and P-cadherin. Beta-catenin associates with the cytoplasmic portion of E-cadherin, which is necessary for the function of E-cadherin as an adhesion molecule. Beta-catenin has also been found in complexes with the tumor suppressor protein APC.

---

### **Limitations and Warranty**

This antibody is available for research use only and is not approved for use in diagnosis. There are no warranties, expressed or implied, which extend beyond this description. Company is not liable for any personal injury or economic loss resulting from this product.

---

### **Supplied As**

200ug/ml of Ab Purified from Bioreactor Concentrate by Protein A/G. Prepared in 10mM PBS with 0.05% BSA & 0.05% azide. Also available WITHOUT BSA & azide at 1.0mg/ml.

---

### **Storage and Stability**

Antibody with azide - store at 2 to 8°C. Antibody without azide - store at -20 to -80°C. Antibody is stable for 24 months. Non-hazardous. No MSDS required.

---

### **Research Areas**

Apoptosis, Autophagy, Basal Cell Marker, BBB VCAM-1 Signaling, Breast Cancer, Cancer, Cardiovascular, Colon Cancer, Developmental Biology, Immunology, Infectious Disease, Signal Transduction, Transcription Factors

---