

BTLA Antibody

Mouse Monoclonal Antibody [Clone BTLA/1528]

Catalog No	Format	Size
151888-MSM1-P0	Purified Ab with BSA and Azide at 200ug/ml	20 ug
151888-MSM1-P1	Purified Ab with BSA and Azide at 200ug/ml	100 ug
151888-MSM1-P1ABX	Purified Ab WITHOUT BSA and Azide at 1.0mg/ml	100 ug

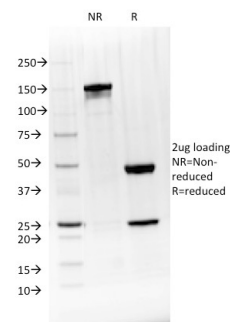
Applications	Tested Dillution	Note
--------------	------------------	------

Product Details

Clone	BTLA/1528
Gene Name	BTLA
Immunogen	Recombinant full-length human BTLA protein
Host	Mouse
Clonality	Monoclonal
Isotype / Light Chain	IgG2b / Kappa
Mol. Weight of Antigen	33kDa
Cellular Localization	Cell membrane
Species Reactivity	Human
Positive Control	Human lymph node or MDAMB468 xenograft.

*Optimal dilution for a specific application should be determined.

Product Images for BTLA Antibody



SDS-PAGE Analysis Purified BTLA Mouse Monoclonal Antibody (BTLA/1528). Confirmation of Integrity and Purity of Antibody.

Specificity & Comments

B and T lymphocyte attenuator (BTLA) is an immunoglobulin domain-containing glycoprotein whose expression is induced during T-cell activation. BTLA is similar to CTLA-4 and PD-1, all of which are coinhibitory receptors belonging to the CD28 family. However, unlike CTLA-4 and PD-1, BTLA does not interact with B7-Ig family counter receptors. Rather, the herpesvirus entry mediator (HVEM), a TNF receptor, acts as a molecular switch that modulates T-cell activation by propagating inhibitory signals through BTLA. The BTLAHVEM interaction is conserved between Mouse and human, suggesting that this system is an important pathway regulating lymphocyte activation.

Supplied As

200ug/ml of Ab Purified from Bioreactor Concentrate by Protein A/G. Prepared in 10mM PBS with 0.05% BSA & 0.05% azide. Also available WITHOUT BSA & azide at 1.0mg/ml.

Storage and Stability

Antibody with azide - store at 2 to 8°C. Antibody without azide - store at -20 to -80°C. Antibody is stable for 24 months. Non-hazardous. No MSDS required.

Research Areas

Immunology, B Cell Markers, Dendritic Cell Marker, Immune checkpoint

Limitations and Warranty

This antibody is available for research use only and is not approved for use in diagnosis. There are no warranties, expressed or implied, which extend beyond this description. Company is not liable for any personal injury or economic loss resulting from this product.