

## Cytochrome p450 Antibody

Mouse Monoclonal Antibody [Clone M12P4H2]

Catalog No	Format	Size
1571-MSM1-P0	Purified Ab with BSA and Azide at 200ug/ml	20 ug
1571-MSM1-P1	Purified Ab with BSA and Azide at 200ug/ml	100 ug
1571-MSM1-P1ABX	Purified Ab WITHOUT BSA and Azide at 1.0mg/ml	100 ug

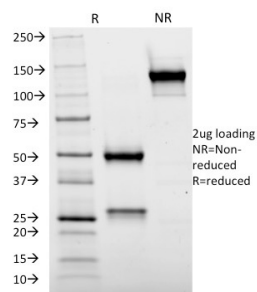
Applications	Tested Dillution	Note
Immunohistochemistry (IHC)	1-2ug/ml	30 min at RT. Staining of formalin-fixed tissues requires heating tissue sections in 10mM Tris with 1mM EDTA, pH 9.0, for 45 min at 95°C followed by cooling at RT for 20 minutes

### Product Details

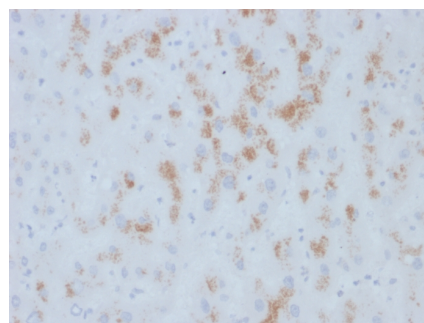
<b>Clone</b>	M12P4H2
<b>Gene Name</b>	CYP2E1
<b>Immunogen</b>	Ovalbumin-conjugated synthetic peptide HIGFGCIPPR (C-terminal sequence)
<b>Host</b>	Mouse
<b>Clonality</b>	Monoclonal
<b>Isotype / Light Chain</b>	IgG1 / Kappa
<b>Mol. Weight of Antigen</b>	~50-55kDa
<b>Cellular Localization</b>	Endoplasmic reticulum membrane, Microsome membrane, Mitochondrion inner membrane
<b>Species Reactivity</b>	Human
<b>Positive Control</b>	HepG2 cells. Liver.

\*Optimal dilution for a specific application should be determined.

### Product Images for Cytochrome p450 Antibody



SDS-PAGE Analysis of Purified Cytochrome p450 Mouse Monoclonal Antibody (M12P4H2). Confirmation of Integrity and Purity of Antibody.



Formalin-fixed, paraffin-embedded human Hepatic Carcinoma stained with Cytochrome p450 Mouse Monoclonal Antibody (M12P4H2).

### Specificity & Comments

This gene encodes a member of the cytochrome P450 superfamily of enzymes. The cytochrome P450 proteins are monooxygenases, which catalyze many reactions involved in drug metabolism and synthesis of cholesterol, steroids and other lipids. This protein localizes to the endoplasmic reticulum and is induced by ethanol, the diabetic state, and starvation. The enzyme metabolizes both endogenous substrates, such as ethanol, acetone, and acetal, as well as exogenous substrates including benzene, carbon tetrachloride, ethylene glycol, and nitrosamines, which are pre-mutagens found in cigarette smoke. Due to its many substrates, this enzyme may be involved in such varied processes as gluconeogenesis, hepatic cirrhosis, diabetes, and cancer.

### Supplied As

200ug/ml of Ab Purified from Bioreactor Concentrate by Protein A/G. Prepared in 10mM PBS with 0.05% BSA & 0.05% azide. Also available WITHOUT BSA & azide at 1mg/ml.

### Storage and Stability

Antibody with azide - store at 2 to 8°C. Antibody without azide - store at -20 to -80°C. Antibody is stable for 24 months. Non-hazardous. No MSDS required.

### Research Areas

Cardiovascular, Mitochondria Marker

## Limitations and Warranty

This antibody is available for research use only and is not approved for use in diagnosis. There are no warranties, expressed or implied, which extend beyond this description. Company is not liable for any personal injury or economic loss resulting from this product.

---