

## Angiotensin I Converting Enzyme (ACE) / CD143 Antibody

Mouse Monoclonal Antibody [Clone ACE/3762]

Catalog No	Format	Size
1636-MSM2-P0	Purified Ab with BSA and Azide at 200ug/ml	20 ug
1636-MSM2-P1	Purified Ab with BSA and Azide at 200ug/ml	100 ug
1636-MSM2-P1ABX	Purified Ab WITHOUT BSA and Azide at 1.0mg/ml	100 ug

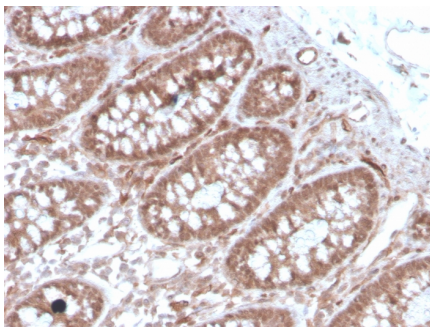
Applications	Tested Dillution	Note
Immunohistochemistry (IHC)	1-2ug/ml	30 min at RT. Staining of formalin-fixed tissues requires heating tissue sections in 10mM Tris with 1mM EDTA, pH 9.0, for 45 min at 95°C followed by cooling at RT for 20 minutes
Western Blot (WB)	2-4ug/ml	

### Product Details

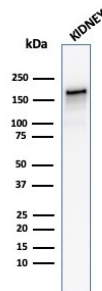
<b>Clone</b>	ACE/3762
<b>Gene Name</b>	ACE
<b>Immunogen</b>	Recombinant fragment (around aa 652-788) of human ACE/CD143 protein
<b>Host</b>	Mouse
<b>Clonality</b>	Monoclonal
<b>Isotype / Light Chain</b>	IgG2c / Kappa
<b>Mol. Weight of Antigen</b>	150kDa
<b>Cellular Localization</b>	Cell membrane, Cytoplasm, Secreted
<b>Species Reactivity</b>	Human
<b>Positive Control</b>	gastrointestinal system and prostate., Heart, Kidney, Ubiquitously expressed, with highest levels in lung

\*Optimal dilution for a specific application should be determined.

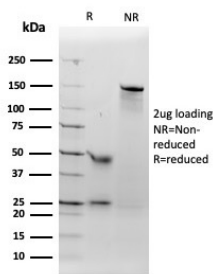
### Product Images for Angiotensin I Converting Enzyme (ACE) / CD143 Antibody



Formalin-fixed, paraffin-embedded human colon stained with ACE / CD143 Mouse Monoclonal Antibody (ACE/3762).



Western Blot Analysis of human Kidney tissue lysate using ACE / CD143 Mouse Monoclonal Antibody (ACE/3762).



SDS-PAGE Analysis of Purified ACE / CD143 Mouse Monoclonal Antibody (ACE/3762). Confirmation of Integrity and Purity of Antibody.

### Specificity & Comments

This gene encodes an enzyme involved in catalyzing the conversion of angiotensin I into a physiologically active peptide angiotensin II. Angiotensin II is a potent vasopressor and aldosterone-stimulating peptide that controls blood pressure and fluid-electrolyte balance. This enzyme plays a key role in the renin-angiotensin system. Many studies have associated the presence or absence of a 287 bp Alu repeat element in this gene with the levels of circulating enzyme or cardiovascular pathophysiologies. Two most abundant alternatively spliced variants of this gene encode two isozymes - the somatic form and the testicular form that are equally active. Multiple additional alternatively spliced variants have been identified but their full length nature has not been determined.

### Limitations and Warranty

This antibody is available for research use only and is not approved for use in diagnosis. There are no warranties, expressed or implied, which extend beyond this description. Company is not liable for any personal injury or economic loss resulting from this product.

### Supplied As

200ug/ml of Ab purified from Bioreactor Concentrate by Protein A/G. Prepared in 10mM PBS with 0.05% BSA & 0.05% azide. Also available WITHOUT BSA & azide at 1.0mg/ml.

### Storage and Stability

Antibody with azide - store at 2 to 8°C. Antibody without azide - store at -20 to -80°C. Antibody is stable for 24 months. Non-hazardous. No MSDS required.

### Research Areas

Cardiovascular, Endothelial Cell Marker