

Dystrophin (DMD) (Marker of Duchenne and Becker Muscular Dystrophy) Antibody

Mouse Monoclonal Antibody [Clone DMD/3242]

Catalog No	Format	Size
1756-MSM2-P0	Purified Ab with BSA and Azide at 200ug/ml	20 ug
1756-MSM2-P1	Purified Ab with BSA and Azide at 200ug/ml	100 ug
1756-MSM2-P1ABX	Purified Ab WITHOUT BSA and Azide at 1.0mg/ml	100 ug

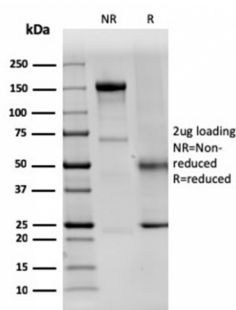
Applications	Tested Dillution	Note
Immunohistochemistry (IHC)	1-2ug/ml	30 min at RT. Staining of formalin-fixed tissues requires heating tissue sections in 10mM Tris with 1mM EDTA, pH 9.0, for 45 min at 95°C followed by cooling at RT for 20 minutes

Product Details

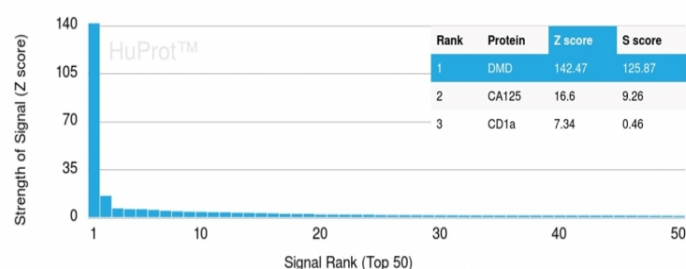
Clone	DMD/3242
Gene Name	DMD
Immunogen	A recombinant fragment (around aa 114-263) of human DMD protein (exact sequence is proprietary)
Host	Mouse
Clonality	Monoclonal
Isotype / Light Chain	IgG2b / Kappa
Mol. Weight of Antigen	427kDa
Cellular Localization	Cell junction, Cell membrane, Cytoplasm, Cytoskeleton, Postsynaptic cell membrane, Sarcolemma, Synapse
Species Reactivity	Human
Positive Control	Human skeletal muscle and heart muscle tissues (IHC).

*Optimal dilution for a specific application should be determined.

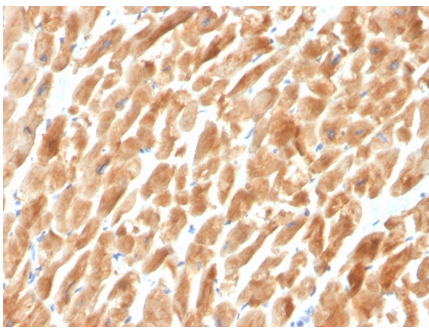
Product Images for Dystrophin (DMD) (Marker of Duchenne and Becker Muscular Dystrophy) Antibody



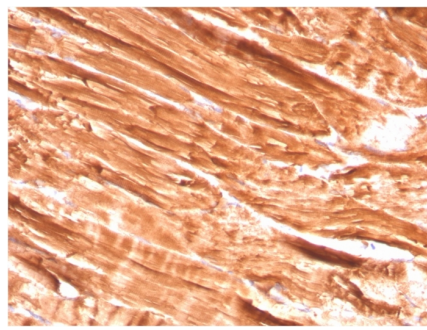
SDS-PAGE Analysis of Purified Dystrophin Monospecific Mouse Monoclonal Antibody (DMD/3242). Confirmation of Purity and Integrity of Antibody.



Analysis of Protein Array containing more than 19,000 full-length human proteins using Dystrophin Monospecific Mouse Monoclonal Antibody (DMD/3242). Z- and S- Score: The Z-score represents the strength of a signal that a monoclonal antibody (Monoclonal Antibody) (in combination with a fluorescently-tagged anti-IgG secondary antibody) produces when binding to a particular protein on the HuProt™ array. Z-scores are described in units of standard deviations (SD's) above the mean value of all signals generated on that array. If targets on HuProt™ are arranged in descending order of the Z-score, the S-score is the difference (also in units of SD's) between the Z-score. S-score therefore represents the relative target specificity of a Monoclonal Antibody to its intended target. A Monoclonal Antibody is considered to be specific to its intended target, if the Monoclonal Antibody has an S-score of at least 2.5. For example, if a Monoclonal Antibody binds to protein X with a Z-score of 43 and to protein Y with a Z-score of 14, then the S-score for the binding of that Monoclonal Antibody to protein X is equal to 29.



Formalin-fixed, paraffin-embedded human cardiac muscle stained with Dystrophin Monospecific Mouse Monoclonal Antibody (DMD/3242).



Formalin-fixed, paraffin-embedded human Skeletal Muscle stained with Dystrophin Monospecific Mouse Monoclonal Antibody (DMD/3242).

Specificity & Comments

Dystrophin-glycoprotein complex (DGC) connects the F-Actin cytoskeleton on the inner surface of muscle fibers to the surrounding extracellular matrix, through the cell membrane interface. A deficiency in this protein contributes to Duchenne (DMD) and Becker (BMD) muscular dystrophies. The human dystrophin gene measures 2.4 megabases, has more than 80 exons, produces a 14 kb mRNA and contains at least 8 independent tissue-specific promoters and 2 poly A sites. The dystrophin mRNA can undergo differential splicing and produce a range of transcripts that encode a large set of proteins. Dystrophin represents approximately 0.002% of total striated muscle protein and localizes to triadic junctions in skeletal muscle, where it is thought to influence calcium ion homeostasis and force transmission.

Limitations and Warranty

This antibody is available for research use only and is not approved for use in diagnosis. There are no warranties, expressed or implied, which extend beyond this description. Company is not liable for any personal injury or economic loss resulting from this product.

Supplied As

200ug/ml of Ab Purified from Bioreactor Concentrate by Protein A/G. Prepared in 10mM PBS with 0.05% BSA & 0.05% azide. Also available WITHOUT BSA & azide at 1.0mg/ml.

Storage and Stability

Antibody with azide - store at 2 to 8°C. Antibody without azide - store at -20 to -80°C. Antibody is stable for 24 months. Non-hazardous. No MSDS required.

Research Areas

Cardiovascular