

## Recombinant Secretory Component / ECM1 Antibody

Rabbit Monoclonal Antibody [Clone ECM1/2889R]

Catalog No	Format	Size
1893-RBM3-P0	Purified Ab with BSA and Azide at 200ug/ml	20 ug
1893-RBM3-P1	Purified Ab with BSA and Azide at 200ug/ml	100 ug
1893-RBM3-P1ABX	Purified Ab WITHOUT BSA and Azide at 1.0mg/ml	100 ug

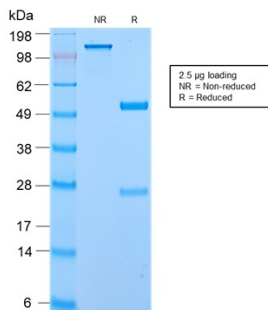
Applications	Tested Dillution	Note
Immunohistochemistry (IHC)	1-2ug/ml	30 min at RT. Staining of formalin-fixed tissues requires heating tissue sections in 10mM Tris with 1mM EDTA, pH 9.0, for 45 min at 95°C followed by cooling at RT for 20 minutes

### Product Details

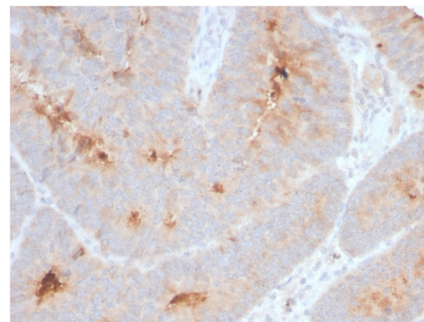
<b>Clone</b>	ECM1/2889R
<b>Gene Name</b>	ECM1
<b>Immunogen</b>	Recombinant human full-length ECM1 protein
<b>Host</b>	Rabbit
<b>Clonality</b>	Monoclonal
<b>Isotype / Light Chain</b>	IgG / Kappa
<b>Mol. Weight of Antigen</b>	~80kDa
<b>Cellular Localization</b>	Extracellular matrix, Extracellular space, Secreted
<b>Species Reactivity</b>	Human, Rat
<b>Positive Control</b>	lung or breast tumor., Stomach

\*Optimal dilution for a specific application should be determined.

### Product Images for Recombinant Secretory Component / ECM1 Antibody



SDS-PAGE Analysis of Purified Secretory Component Rabbit Recombinant Monoclonal (ECM1/2889R). Confirmation of Purity and Integrity of Antibody.



Formalin-fixed, paraffin-embedded human Colon Carcinoma stained with Secretory Component Rabbit Recombinant Monoclonal (ECM1/2889R).

### Specificity & Comments

This MAb reacts with a reduction-resistant epitope present in both free and SIgA bound Secretory Component. It does not react with the cell lines lacking secretory component. The antibody is useful for studying the distribution and level of both free and bound secretory component. Secretory component is differentially expressed in epithelium, and the antibody is a popular marker for identifying subpopulations of epithelial cells and epithelial differentiation. The Secretory component antibody is a useful research tool for studying mucosal immunity, inflammation, remodeling, differentiation and tumorigenesis, all processes associated with differential secretory component expression.

### Supplied As

200ug/ml of Ab Purified from Bioreactor Concentrate by Protein A/G. Prepared in 10mM PBS with 0.05% BSA & 0.05% azide. Also available WITHOUT BSA & azide at 1.0mg/ml.

### Storage and Stability

Antibody with azide - store at 2 to 8°C. Antibody without azide - store at -20 to -80°C. Antibody is stable for 24 months. Non-hazardous. No MSDS required.

### Research Areas

Cardiovascular

## Limitations and Warranty

This antibody is available for research use only and is not approved for use in diagnosis. There are no warranties, expressed or implied, which extend beyond this description. Company is not liable for any personal injury or economic loss resulting from this product.

---