

## EGFR (Epidermal Growth Factor Receptor) Antibody

Mouse Monoclonal Antibody [Clone B1D8]

Catalog No	Format	Size
1956-MSM2-P0	Purified Ab with BSA and Azide at 200ug/ml	20 ug
1956-MSM2-P1	Purified Ab with BSA and Azide at 200ug/ml	100 ug
1956-MSM2-P1ABX	Purified Ab WITHOUT BSA and Azide at 1.0mg/ml	100 ug

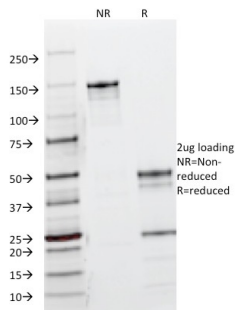
Applications	Tested Dillution	Note
Flow Cytometry (Flow)	1-2ug/million cells	

### Product Details

<b>Clone</b>	B1D8
<b>Gene Name</b>	EGFR
<b>Immunogen</b>	Microsomes from A431 cells.
<b>Host</b>	Mouse
<b>Clonality</b>	Monoclonal
<b>Isotype / Light Chain</b>	IgG2a / Kappa
<b>Mol. Weight of Antigen</b>	~170kDa (wild type) and ~145kDa (vIII variant)
<b>Cellular Localization</b>	Cell membrane, Endoplasmic reticulum membrane, Endosome, Endosome membrane, Golgi apparatus membrane, Nucleus, Nucleus membrane, Secreted
<b>Species Reactivity</b>	Human
<b>Positive Control</b>	A431 cells, Breast or Bladder cancer.

\*Optimal dilution for a specific application should be determined.

### Product Images for EGFR (Epidermal Growth Factor Receptor) Antibody



SDS-PAGE Analysis of Purified EGFR Mouse Monoclonal Antibody (B1D8).  
Confirmation of Integrity and Purity of Antibody.

### Specificity & Comments

This antibody reacts with the extracellular domain of EGFR and blocks the EGF/TGF $\alpha$  induced activation. It also blocks tumor growth in vivo. It is excellent for purification of EGFR. EGFR is type I receptor tyrosine kinase with sequence homology to erbB-1, -2, -3 -4 or HER-1, -2, -3 -4. It binds to Epidermal Growth Factor (EGF), Transforming Growth Factor- $\alpha$  (TGF- $\alpha$ ), Heparin-binding EGF (HB-EGF), amphiregulin, betacellulin and epiregulin.

### Supplied As

200ug/ml of Ab Purified from Bioreactor Concentrate by Protein A/G. Prepared in 10mM PBS with 0.05% BSA & 0.05% azide. Also available WITHOUT BSA & azide at 1.0mg/ml.

### Storage and Stability

Antibody with azide - store at 2 to 8°C. Antibody without azide - store at -20 to -80°C. Antibody is stable for 24 months. Non-hazardous. No MSDS required.

### Research Areas

Autophagy, Breast Cancer, Cancer, Cardiovascular, Developmental Biology, AKT Signaling, Bladder Cancer, Colon Cancer, Infectious Disease, MAPK Signaling, Signal Transduction, Transcription Factors

## Limitations and Warranty

This antibody is available for research use only and is not approved for use in diagnosis. There are no warranties, expressed or implied, which extend beyond this description. Company is not liable for any personal injury or economic loss resulting from this product.

---