

## Reelin Antibody

Mouse Monoclonal Antibody [Clone RELN/4498]

Catalog No	Format	Size
19699-MSM1-P0	Purified Ab with BSA and Azide at 200ug/ml	20 ug
19699-MSM1-P1	Purified Ab with BSA and Azide at 200ug/ml	100 ug
19699-MSM1-P1ABX	Purified Ab WITHOUT BSA and Azide at 1.0mg/ml	100 ug

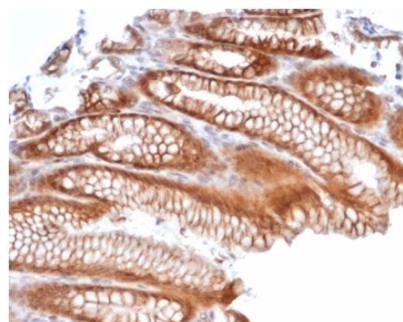
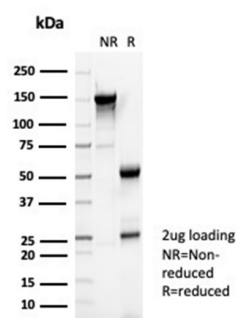
Applications	Tested Dillution	Note
Immunofluorescence (IF)	1-3ug/ml	
Immunohistochemistry (IHC)	1-2ug/ml	30 min at RT. Staining of formalin-fixed tissues requires heating tissue sections in 10mM Tris with 1mM EDTA, pH 9.0, for 45 min at 95°C followed by cooling at RT for 20 minutes
Western Blot (WB)	2-4ug/ml	

### Product Details

<b>Clone</b>	RELN/4498
<b>Gene Name</b>	RELN
<b>Immunogen</b>	Recombinant fragment (around aa 1796-2115) of human RELN protein
<b>Host</b>	Mouse
<b>Clonality</b>	Monoclonal
<b>Isotype / Light Chain</b>	IgG2b
<b>Mol. Weight of Antigen</b>	387.5kDa
<b>Cellular Localization</b>	Extracellular matrix, Extracellular space, Secreted
<b>Species Reactivity</b>	Human, Mouse, Rodent
<b>Positive Control</b>	Human or mouse brain or CNS.

\*Optimal dilution for a specific application should be determined.

### Product Images for Reelin Antibody



SDS-PAGE Analysis of Purified RELN Mouse Monoclonal Antibody (RELN/4498). Confirmation of Purity and Integrity of Antibody.

Formalin-fixed, paraffin-embedded human kidney stained with Reelin Mouse Monoclonal Antibody (RELN/4498). Inset: PBS instead of primary antibody; secondary only negative control.

**Specificity & Comments**

Reelin (or Reln) is a large glycoprotein that is secreted by Cajal-Retzius cells in the forebrain and by granule neurons in the cerebellum. Reelin was shown to be mutated in reeler mice, a mutation that is associated with widespread disruption of laminated regions of the brain, leading to impaired motor coordination, tremors and ataxia. Reelin protein expression is complex and changes throughout development. Reelin appears to function upstream of Dab1, in a signaling pathway that controls cell positioning in the developing brain, and is also thought to be a direct effector of the neurotrophin BDNF.

---

**Limitations and Warranty**

This antibody is available for research use only and is not approved for use in diagnosis. There are no warranties, expressed or implied, which extend beyond this description. Company is not liable for any personal injury or economic loss resulting from this product.

---

**Supplied As**

200ug/ml of Ab purified from Bioreactor Concentrate by Protein A/G. Prepared in 10mM PBS with 0.05% BSA & 0.05% azide. Also available WITHOUT BSA & azide at 1.0mg/ml.

---

**Storage and Stability**

Antibody with azide - store at 2 to 8 °C. Antibody without azide - store at -20 to -80 °C. Antibody is stable for 24 months. Non-hazardous. No MSDS required.

---