

ELK1 Antibody

Mouse Monoclonal Antibody [Clone PCR-P-ELK1-1D9]

Catalog No	Format	Size
2002-MSM2-P0	Purified Ab with BSA and Azide at 200ug/ml	20 ug
2002-MSM2-P1	Purified Ab with BSA and Azide at 200ug/ml	100 ug
2002-MSM2-P1ABX	Purified Ab WITHOUT BSA and Azide at 1.0mg/ml	100 ug

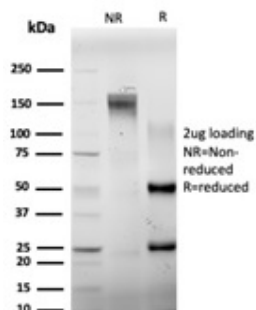
Applications	Tested Dillution	Note
Immunofluorescence (IF)	1-3ug/ml	
Western Blot (WB)	2-4ug/ml	

Product Details

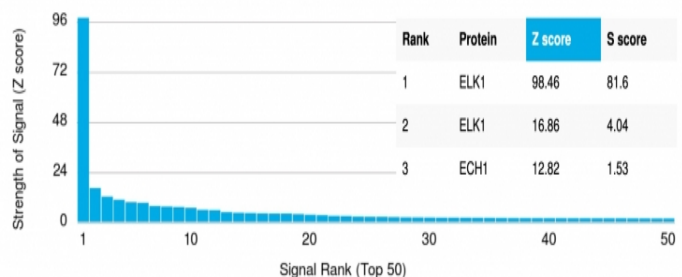
Clone	PCR-P-ELK1-1D9
Gene Name	ELK1
Immunogen	Recombinant full-length human ELK1 protein
Host	Mouse
Clonality	Monoclonal
Isotype / Light Chain	IgG2b
Mol. Weight of Antigen	44.89kDa
Cellular Localization	Nucleus
Species Reactivity	Human
Positive Control	HeLa or K562 cells.

*Optimal dilution for a specific application should be determined.

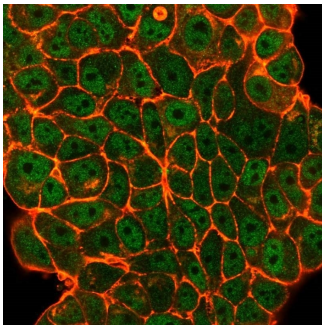
Product Images for ELK1 Antibody



SDS-PAGE Analysis of Purified ELK1 Mouse Monoclonal Antibody (PCR-P-ELK1-1D9). Confirmation of Purity and Integrity of Antibody.



Analysis of Protein Array containing more than 19,000 full-length human proteins using ELK1 Mouse Monoclonal Antibody (PCR-P-ELK1-1D9). Z- and S- Score: The Z-score represents the strength of a signal that a monoclonal antibody (MAb) (in combination with a fluorescently-tagged anti-IgG secondary antibody) produces when binding to a particular protein on the HuProt™ array. Z-scores are described in units of standard deviations (SD's) above the mean value of all signals generated on that array. If targets on HuProt™ are arranged in descending order of the Z-score, the S-score is the difference (also in units of SD's) between the Z-score. S-score therefore represents the relative target specificity of a MAb to its intended target. A MAb is considered to specific to its intended target, if the MAb has an S-score of at least 2.5. For example, if a MAb binds to protein X with a Z-score of 43 and to protein Y with a Z-score of 14, then the S-score for the binding of that MAb to protein X is equal to 29.



Immunofluorescent analysis of PFA-fixed MCF-7 cells. ELK1 Mouse Monoclonal Antibody (PCRP-ELK1-1D9) followed by goat anti-mouse IgG-CF488 (green); counterstain is phalloidin (red).

Specificity & Comments

Ets-1 is the prototype member of a family of genes identified on the basis of homology to the v-Ets oncogene isolated from the E26 erythroblastosis virus. This family of genes currently includes Ets-1, Ets-2, Erg-1, Elk-1, Elf-1, Elf-5, NERF, PU.1, PEA3, ERM, FEV, ER81, Fli-1, TEL, Spi-B, ESE-1, ESE-3A, Net, ABT1 and ERF. Members of the Ets gene family exhibit varied patterns of tissue expression, and share a highly conserved carboxy-terminal domain containing a sequence related to the SV40 large T antigen nuclear localization signal sequence. This conserved domain is essential for Ets-1 binding to DNA and is likely to be responsible for the DNA binding activity of all members of the Ets gene family. Several of these proteins have been shown to recognize similar motifs in DNA that share a centrally located 5'-GGAA-3' element.

Limitations and Warranty

This antibody is available for research use only and is not approved for use in diagnosis. There are no warranties, expressed or implied, which extend beyond this description. Company is not liable for any personal injury or economic loss resulting from this product.

Supplied As

200ug/ml of Ab purified from Bioreactor Concentrate by Protein A/G. Prepared in 10mM PBS with 0.05% BSA & 0.05% azide. Also available WITHOUT BSA & azide at 1.0mg/ml.

Storage and Stability

Antibody with azide - store at 2 to 8 °C. Antibody without azide - store at -20 to -80 °C. Antibody is stable for 24 months. Non-hazardous. No MSDS required.

Research Areas

Cardiovascular, Immunology, Cytokine Signaling, Infectious Disease, MAPK Signaling, Nuclear Marker, Signal Transduction