

## ER-beta (Estrogen Receptor beta-2) Antibody

Mouse Monoclonal Antibody [Clone 57/3]

Catalog No	Format	Size
2100-MSM11-P0	Purified Ab with BSA and Azide at 200ug/ml	20 ug
2100-MSM11-P1	Purified Ab with BSA and Azide at 200ug/ml	100 ug
2100-MSM11-P1ABX	Purified Ab WITHOUT BSA and Azide at 1.0mg/ml	100 ug

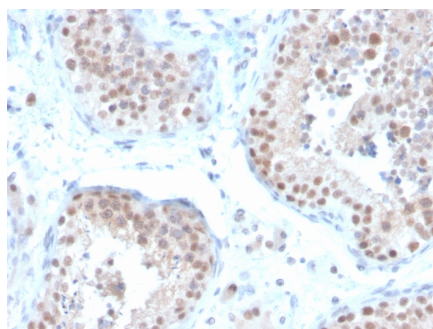
Applications	Tested Dillution	Note
Flow Cytometry (Flow)	1-2ug/million cells	
Immunofluorescence (IF)	1-3ug/ml	
Immunohistochemistry (IHC)	1-2ug/ml	30 min at RT. Staining of formalin-fixed tissues requires heating tissue sections in 10mM Tris with 1mM EDTA, pH 9.0, for 45 min at 95°C followed by cooling at RT for 20 minutes
Western Blot (WB)	2-4ug/ml	

### Product Details

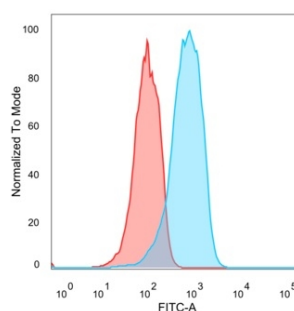
<b>Clone</b>	57/3
<b>Gene Name</b>	ESR2
<b>Immunogen</b>	A synthetic peptide (CGMKMETLLPEATMEQ ) from the C terminus of the human estrogen receptor beta 2 isomer
<b>Host</b>	Mouse
<b>Clonality</b>	Monoclonal
<b>Isotype / Light Chain</b>	IgG1 / Kappa
<b>Mol. Weight of Antigen</b>	59kDa
<b>Cellular Localization</b>	Nucleus
<b>Species Reactivity</b>	Human
<b>Positive Control</b>	MCF-7 cells. Human testis tissue.

\*Optimal dilution for a specific application should be determined.

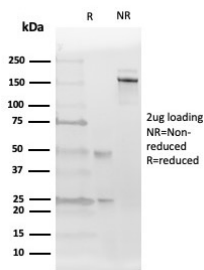
### Product Images for ER-beta (Estrogen Receptor beta-2) Antibody



Formalin-fixed, paraffin-embedded human testis stained with ER-beta2 Mouse Monoclonal Antibody (57/3).



Flow Cytometric Analysis of PFA-fixed MCF-7 cells using ER-beta2 Mouse Monoclonal Antibody (57/3) followed by goat anti-mouse IgG-CF488 (blue); isotype control (red).



SDS-PAGE Analysis of Purified Estrogen Receptor beta2 Mouse Monoclonal Antibody (57/3). Confirmation of Integrity and Purity of Antibody.

### Specificity & Comments

This MAb recognizes the estrogen receptor beta 2 isoform, expressed in cell nuclei of a range of human tissues including ovary, placenta, testis and vas deferens. No cross-reactivity is seen with estrogen receptor beta 1 isoform. This gene encodes a member of the family of estrogen receptors and superfamily of nuclear receptor transcription factors. The gene product contains an N-terminal DNA binding domain and C-terminal ligand binding domain and is localized to the nucleus, cytoplasm, and mitochondria. Upon binding to 17beta-estradiol or related ligands, the encoded protein forms homo- or hetero-dimers that interact with specific DNA sequences to activate transcription. Some isoforms dominantly inhibit the activity of other estrogen receptor family members.

### Limitations and Warranty

This antibody is available for research use only and is not approved for use in diagnosis. There are no warranties, expressed or implied, which extend beyond this description. Company is not liable for any personal injury or economic loss resulting from this product.

### Supplied As

200ug/ml of Ab purified from Bioreactor Concentrate by Protein A/G. Prepared in 10mM PBS with 0.05% BSA & 0.05% azide. Also available WITHOUT BSA & azide at 1.0mg/ml.

### Storage and Stability

Antibody with azide - store at 2 to 8 °C. Antibody without azide - store at -20 to -80 °C. Antibody is stable for 24 months. Non-hazardous. No MSDS required.

### Research Areas

Breast Cancer, Cardiovascular, Infectious Disease, Nuclear Marker, Signal Transduction, Transcription Factors