

## ETS2 (Transcription Factor) Antibody

Mouse Monoclonal Antibody [Clone PCR-ETS2-1D9]

Catalog No	Format	Size
2114-MSM1-P0	Purified Ab with BSA and Azide at 200ug/ml	20 ug
2114-MSM1-P1	Purified Ab with BSA and Azide at 200ug/ml	100 ug
2114-MSM1-P1ABX	Purified Ab WITHOUT BSA and Azide at 1.0mg/ml	100 ug

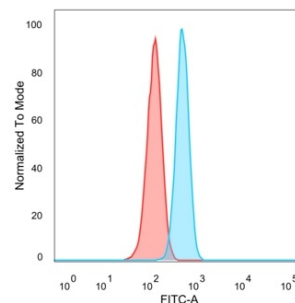
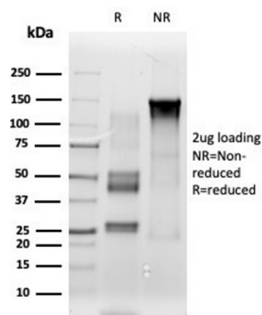
Applications	Tested Dillution	Note
Flow Cytometry (Flow)	1-2ug/million cells	
Immunofluorescence (IF)	1-3ug/ml	

### Product Details

Clone	PCR-ETS2-1D9
Gene Name	ETS2
Immunogen	Recombinant full-length human ETS2 protein
Host	Mouse
Clonality	Monoclonal
Isotype / Light Chain	IgG2b
Mol. Weight of Antigen	52kDa
Cellular Localization	Nucleus
Species Reactivity	Human
Positive Control	Human thymus, lung or cerebellum.

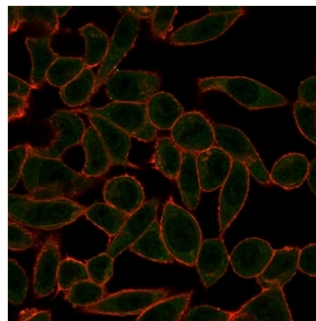
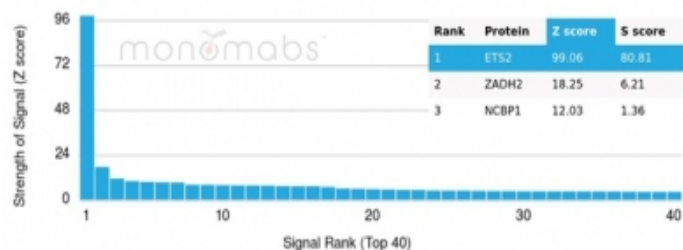
\*Optimal dilution for a specific application should be determined.

### Product Images for ETS2 (Transcription Factor) Antibody



followed by goat anti-mouse IgG-CF488 (green). CF640A phalloidin (red).

Flow cytometric analysis of PFA-fixed HeLa cells. ETS2 Mouse Monoclonal Antibody (PCR-ETS2-1D9) followed by goat anti-mouse IgG-CF488 (blue); isotype control (red).



SDS-PAGE Analysis of Purified ETS2 Mouse Monoclonal Antibody (PCRP-ETS2-1D9). Confirmation of Purity and Integrity of Antibody.

Immunofluorescence Analysis of PFA-fixed HeLa cells stained using ETS2 Mouse Monoclonal Antibody (PCRP-ETS2-1D9)

### Specificity & Comments

ETS2 (or Reln) is a large glycoprotein that is secreted by Cajal-Retzius cells in the forebrain and by granule neurons in the cerebellum. ETS2 was shown to be mutated in reeler mice, a mutation that is associated with widespread disruption of laminated regions of the brain, leading to impaired motor coordination, tremors and ataxia. ETS2 protein expression is complex and changes throughout development. ETS2 appears to function upstream of Dab1, in a signaling pathway that controls cell positioning in the developing brain, and is also thought to be a direct effector of the neurotrophin BDNF.

### Supplied As

200ug/ml of Ab purified from Bioreactor Concentrate by Protein A/G. Prepared in 10mM PBS with 0.05% BSA & 0.05% azide. Also available WITHOUT BSA & azide at 1.0mg/ml.

### Storage and Stability

Antibody with azide - store at 2 to 8 °C. Antibody without azide - store at -20 to -80 °C. Antibody is stable for 24 months. Non-hazardous. No MSDS required.

### Research Areas

Cardiovascular, Nuclear Marker

### Limitations and Warranty

This antibody is available for research use only and is not approved for use in diagnosis. There are no warranties, expressed or implied, which extend beyond this description. Company is not liable for any personal injury or economic loss resulting from this product.