

## Fibrillin-1 (FBN1) (Marfan Syndrome Marker) Antibody

Mouse Monoclonal Antibody [Clone FBN1/6933]

Catalog No	Format	Size
2200-MSM3-P0	Purified Ab with BSA and Azide at 200ug/ml	20 ug
2200-MSM3-P1	Purified Ab with BSA and Azide at 200ug/ml	100 ug
2200-MSM3-P1ABX	Purified Ab WITHOUT BSA and Azide at 1.0mg/ml	100 ug

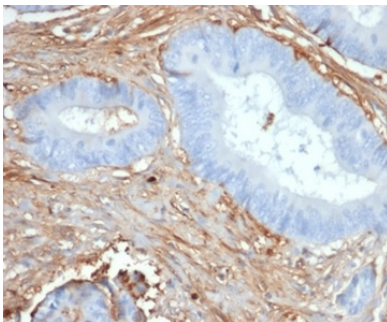
Applications	Tested Dillution	Note
Immunohistochemistry (IHC)	1-2ug/ml	30 min at RT. Staining of formalin-fixed tissues requires heating tissue sections in 10mM Tris with 1mM EDTA, pH 9.0, for 45 min at 95°C followed by cooling at RT for 20 minutes

### Product Details

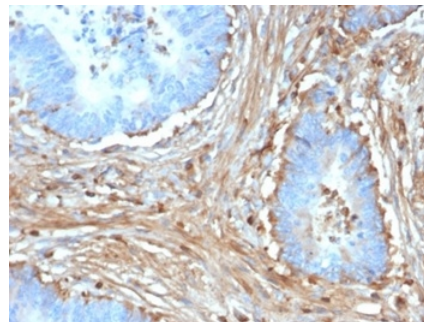
Clone	FBN1/6933
Gene Name	FBN1
Immunogen	Recombinant human Fibrillin 1 fragment around aa 330-476 (Exact sequence is proprietary)
Host	Mouse
Clonality	Monoclonal
Isotype / Light Chain	IgG1 / Kappa
Mol. Weight of Antigen	350kDa
Cellular Localization	Extracellular matrix, Extracellular space, Secreted
Species Reactivity	Human
Positive Control	HepG2 cells. Human kidney or placenta.

\*Optimal dilution for a specific application should be determined.

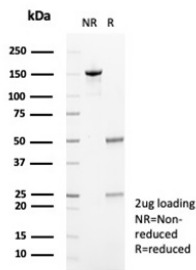
### Product Images for Fibrillin-1 (FBN1) (Marfan Syndrome Marker) Antibody



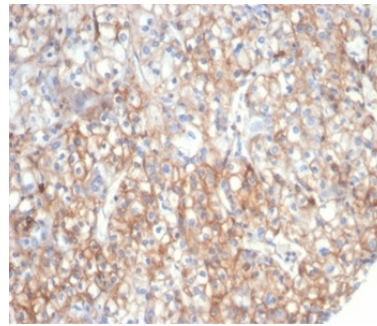
Formalin-fixed, paraffin-embedded human prostate stained with Fibrillin 1 Mouse Monoclonal Antibody (FBN1/6933). HIER: Tris/EDTA, pH9.0, 45min. 2°C: HRP-polymer, 30min. DAB, 5min.



Formalin-fixed, paraffin-embedded human colon carcinoma stained with Fibrillin 1 Mouse Monoclonal Antibody (FBN1/6933). HIER: Tris/EDTA, pH9.0, 45min. 2°C: HRP-polymer, 30min. DAB, 5min.



SDS-PAGE Analysis of Purified Fibrillin 1 Mouse Monoclonal Antibody (FBN1/6933). Confirmation of Purity and Integrity of Antibody.



Formalin-fixed, paraffin-embedded human kidney carcinoma stained with Fibrillin 1 Mouse Monoclonal Antibody (FBN1/6933). HIER: Tris/EDTA, pH9.0, 45min. 2°C: HRP-polymer, 30min. DAB, 5min.

### Specificity & Comments

Fibrillin-1 is an extracellular matrix glycoprotein that serves as a structural component of calcium-binding microfibrils. These microfibrils provide force-bearing structural support in elastic and non-elastic connective tissue throughout the body. Mutations in this gene are associated with Marfan syndrome.

### Supplied As

200ug/ml of Ab purified from Bioreactor Concentrate by Protein A/G. Prepared in 10mM PBS with 0.05% BSA & 0.05% azide. Also available WITHOUT BSA & azide at 1.0mg/ml.

### Storage and Stability

Antibody with azide - store at 2 to 8 °C. Antibody without azide - store at -20 to -80 °C. Antibody is stable for 24 months. Non-hazardous. No MSDS required.

### Research Areas

Cardiovascular, Signal Transduction

### Limitations and Warranty

This antibody is available for research use only and is not approved for use in diagnosis. There are no warranties, expressed or implied, which extend beyond this description. Company is not liable for any personal injury or economic loss resulting from this product.