

CD32 (Fc Gamma RIIa) Antibody

Mouse Monoclonal Antibody [Clone 8.7]

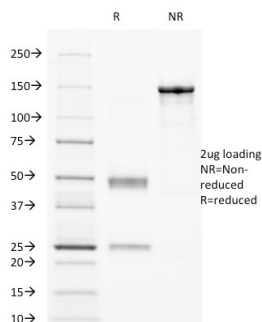
Catalog No	Format	Size
2212-MSM3-P0	Purified Ab with BSA and Azide at 200ug/ml	20 ug
2212-MSM3-P1	Purified Ab with BSA and Azide at 200ug/ml	100 ug
2212-MSM3-P1ABX	Purified Ab WITHOUT BSA and Azide at 1.0mg/ml	100 ug

Applications	Tested Dillution	Note
Flow Cytometry (Flow)	1-2ug/million cells	
Immunofluorescence (IF)	1-3ug/ml	

Product Details	
Clone	8.7
Gene Name	FCGR2A
Immunogen	K562 and FcgRII+L cells
Host	Mouse
Clonality	Monoclonal
Isotype / Light Chain	IgG1 / Kappa
Mol. Weight of Antigen	40kDa
Cellular Localization	Cell membrane
Species Reactivity	Human
Positive Control	K-562 cells. Lymph node, tonsil and placenta.

*Optimal dilution for a specific application should be determined.

Product Images for CD32 (Fc Gamma RIIa) Antibody



SDS-PAGE Analysis of Purified CD32 Mouse Monoclonal Antibody (8.7). Confirmation of Purity and Integrity of Antibody.

Specificity & Comments

This MAb reacts with a CD32 (FcγRII) epitope distinct from that defined by MAb 8.26 and the epitope overlaps with that of MAb 7.30 (cluster 4). It displays a stronger reaction with Daudi than with U937 cells. The epitope is located in domain 2 of FcγRIIa. Its Fab'2 fragments block immune complex binding. CD32 (FcγRII) is a type 1 transmembrane glycoprotein that mediates several functions including phagocytosis, cytotoxicity, and immunomodulation as well as platelet aggregation. Three genes (A, B, and C) encode CD32 and at least 6 isoforms are generated via alternative mRNA splicing, i.e., IIa1, IIa2, IIb1, IIb2, IIb3 and IIc. Monocytes/macrophages, placental trophoblasts and endothelial cells express all isoforms. In addition, the IIb isoform is expressed by B cells, and the IIa isoform by platelets, granulocytes and, weakly, by B cells. NK cells and neutrophils express Isoform IIc. CD32 binds weakly to the Fc region of monomeric IgG but more strongly to IgG aggregates and immune complexes.

Supplied As

200ug/ml of Ab Purified from Bioreactor Concentrate by Protein A/G. Prepared in 10mM PBS with 0.05% BSA & 0.05% azide. Also available WITHOUT BSA & azide at 1.0mg/ml.

Storage and Stability

Antibody with azide - store at 2 to 8°C. Antibody without azide - store at -20 to -80°C. Antibody is stable for 24 months. Non-hazardous. No MSDS required.

Research Areas

Cardiovascular, Hematopoietic Stem Cells, Immunology, Infectious Disease

Limitations and Warranty

This antibody is available for research use only and is not approved for use in diagnosis. There are no warranties, expressed or implied, which extend beyond this description. Company is not liable for any personal injury or economic loss resulting from this product.
