

## Recombinant MART-1 / Melan-A / MLANA (Melanoma Marker) Antibody

Rabbit Monoclonal Antibody [Clone MLANA/1761R]

| Catalog No       | Format  | Size   |
|------------------|---|--------|
| 2315-RBM11-P0    | Purified Ab with BSA and Azide at 200ug/ml    | 20 ug  |
| 2315-RBM11-P1    | Purified Ab with BSA and Azide at 200ug/ml    | 100 ug |
| 2315-RBM11-P1ABX | Purified Ab WITHOUT BSA and Azide at 1.0mg/ml | 100 ug |

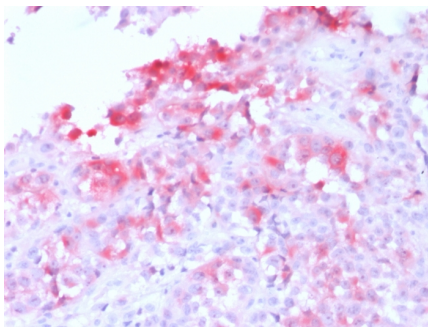
| Applications               | Tested Dillution | Note  |
|----------------------------|------------------|---|
| Immunohistochemistry (IHC) | 1-2ug/ml         | 30 min at RT. Staining of formalin-fixed tissues requires heating tissue sections in 10mM Tris with 1mM EDTA, pH 9.0, for 45 min at 95°C followed by cooling at RT for 20 minutes |
| Western Blot (WB)          | 2-4ug/ml         |   |

### Product Details

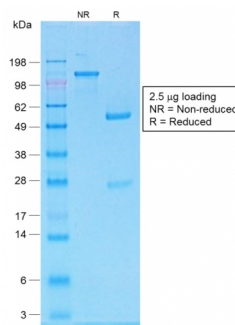
|                               |   |
|-------------------------------|---|
| <b>Clone</b>                  | MLANA/1761R   |
| <b>Gene Name</b>              | MLANA   |
| <b>Immunogen</b>              | Recombinant human full-length MLANA protein   |
| <b>Host</b>                   | Rabbit  |
| <b>Clonality</b>              | Monoclonal  |
| <b>Isotype / Light Chain</b>  | IgG / Kappa   |
| <b>Mol. Weight of Antigen</b> | 20-22kDa (doublet)  |
| <b>Cellular Localization</b>  | Endoplasmic reticulum membrane, Golgi apparatus, Melanosome, trans-Golgi network membrane |
| <b>Species Reactivity</b>     | Human, Mouse, Rat   |
| <b>Positive Control</b>       | COLO38, SK-MEL-13 and SK-MEL-19 melanoma cell lines. Human melanoma tissues.              |

\*Optimal dilution for a specific application should be determined.

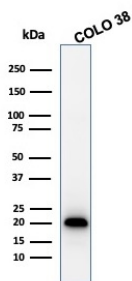
### Product Images for Recombinant MART-1 / Melan-A / MLANA (Melanoma Marker) Antibody



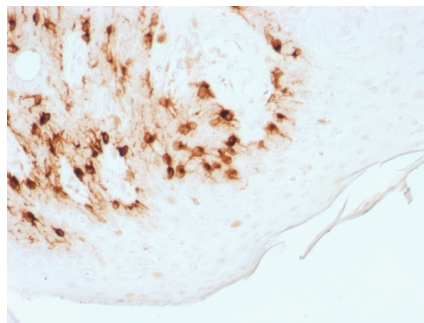
Formalin-fixed, paraffin-embedded human Melanoma stained with MART-1 Rabbit Recombinant Monoclonal Antibody (MLANA/1761R) (AP-Fast Red).



SDS-PAGE Analysis of Purified MART-1 Rabbit Recombinant Monoclonal Antibody (MLANA/1761R).



Western Blot Analysis of COLO 38 cell lysate using MART-1 Rabbit Recombinant Monoclonal Antibody (MLANA/1761R).



Formalin-fixed, paraffin-embedded human Skin stained with MART-1 Rabbit Recombinant Monoclonal Antibody (MLANA/1761R) (HRP-DAB).

### Specificity & Comments

This antibody recognizes a protein doublet of 20-22kDa, identified as MART-1 (Melanoma Antigen Recognized by T cells 1) or Melan-A. MART-1 is a newly identified melanocyte differentiation antigen recognized by autologous cytotoxic T lymphocytes. Seven other melanoma associated antigens recognized by autologous cytotoxic T cells include MAGE-1, MAGE-3, tyrosinase, gp100, gp75, BAGE-1, and GAGE-1. Subcellular fractionation shows that MART-1 is present in melanosomes and endoplasmic reticulum. This MAb labels melanomas and other tumors showing melanocytic differentiation. It is also a useful positive-marker for angiomyolipomas. It does not stain tumor cells of epithelial, lymphoid, glial, or mesenchymal origin.

### Limitations and Warranty

This antibody is available for research use only and is not approved for use in diagnosis. There are no warranties, expressed or implied, which extend beyond this description. Company is not liable for any personal injury or economic loss resulting from this product.

### Supplied As

200ug/ml of Ab Purified by Protein A. Prepared in 10mM PBS with 0.05% BSA & 0.05% azide. Also available WITHOUT BSA & azide at 1.0mg/ml.

### Storage and Stability

Antibody with azide - store at 2 to 8°C. Antibody without azide - store at -20 to -80°C. Antibody is stable for 24 months. Non-hazardous. No MSDS required.