

AMACR / p504S (Prostate Cancer Marker) Antibody

Mouse Monoclonal Antibody [Clone AMACR/1723]

Catalog No	Format	Size
23600-MSM3-P0	Purified Ab with BSA and Azide at 200ug/ml	20 ug
23600-MSM3-P1	Purified Ab with BSA and Azide at 200ug/ml	100 ug
23600-MSM3-P1ABX	Purified Ab WITHOUT BSA and Azide at 1.0mg/ml	100 ug

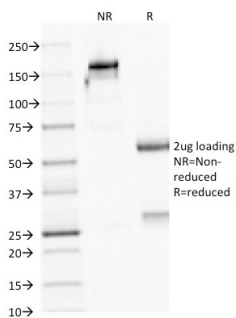
Applications	Tested Dillution	Note
Immunohistochemistry (IHC)	1-2ug/ml	30 min at RT. Staining of formalin-fixed tissues requires heating tissue sections in 10mM Tris with 1mM EDTA, pH 9.0, for 45 min at 95°C followed by cooling at RT for 20 minutes
Western Blot (WB)	2-4ug/ml	

Product Details

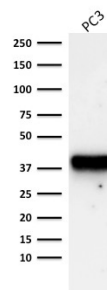
Clone	AMACR/1723
Gene Name	AMACR
Immunogen	Recombinant full-length human AMACR protein
Host	Mouse
Clonality	Monoclonal
Isotype / Light Chain	IgG2b / Lambda
Mol. Weight of Antigen	42kDa
Cellular Localization	Mitochondrion, Peroxisome
Species Reactivity	Human
Positive Control	HEK cells. Prostate Adenocarcinoma, Human Liver and and Kidney Tissue., PC3

*Optimal dilution for a specific application should be determined.

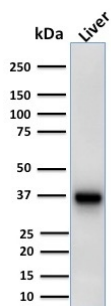
Product Images for AMACR / p504S (Prostate Cancer Marker) Antibody



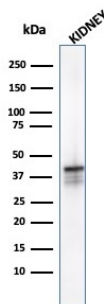
SDS-PAGE Analysis Purified AMACR / p504S Mouse Monoclonal Antibody (AMACR/1723). Confirmation of Integrity and Purity of Antibody.



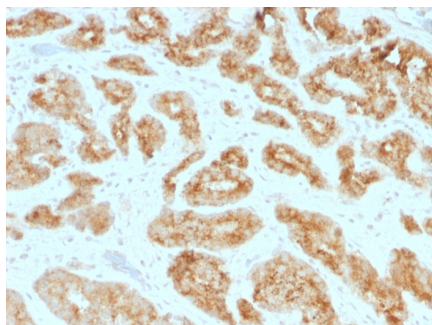
Western Blot Analysis of PC3 cell lysate using Purified AMACR / p504S Mouse Monoclonal Antibody (AMACR/1723).



Western Blot Analysis of Liver tissue lysate using Purified AMACR / p504S Mouse Monoclonal Antibody (AMACR/1723).



Western Blot analysis of Kidney tissue lysate using AMACR Mouse Monoclonal Antibody (AMACR/1723).



Formalin-fixed, paraffin-embedded human Prostate Carcinoma stained with AMACR / p504S Mouse Monoclonal Antibody (AMACR/1723).

Specificity & Comments

This antibody recognizes a protein of 42kDa, which is identified as AMACR, also known as p504S. It is an enzyme that is involved in bile acid biosynthesis and -oxidation of branched-chain fatty acids. AMACR is essential in lipid metabolism. It is expressed in cells of premalignant high-grade prostatic intraepithelial neoplasia (HGPIN) and prostate adenocarcinoma. The majority of the carcinoma cells show a distinct granular cytoplasmic staining reaction. AMACR is present at low or undetectable levels in glandular epithelial cells of normal prostate and benign prostatic hyperplasia. A spotty granular cytoplasmic staining is seen in a few cells of the benign glands. AMACR is expressed in normal liver (hepatocytes), kidney (tubular epithelial cells) and gall bladder (epithelial cells). Expression has also been found in lung (bronchial epithelial cells) and colon (colonic surface epithelium). AMACR expression can also be found in hepatocellular carcinoma and kidney carcinoma. Past studies have also shown that AMACR is expressed in various colon carcinomas (well, moderately and poorly differentiated) and over expressed in prostate carcinoma.

Limitations and Warranty

This antibody is available for research use only and is not approved for use in diagnosis. There are no warranties, expressed or implied, which extend beyond this description. Company is not liable for any personal injury or economic loss resulting from this product.

Supplied As

200ug/ml of Ab Purified from Bioreactor Concentrate by Protein A/G. Prepared in 10mM PBS with 0.05% BSA & 0.05% azide. Also available WITHOUT BSA & azide at 1.0mg/ml.

Storage and Stability

Antibody with azide - store at 2 to 8°C. Antibody without azide - store at -20 to -80°C. Antibody is stable for 24 months. Non-hazardous. No MSDS required.

Research Areas

Cardiovascular