

Gastrin Antibody

Mouse Monoclonal Antibody [Clone GAST/2634]

Catalog No	Format	Size
2520-MSM4-P0	Purified Ab with BSA and Azide at 200ug/ml	20 ug
2520-MSM4-P1	Purified Ab with BSA and Azide at 200ug/ml	100 ug
2520-MSM4-P1ABX	Purified Ab WITHOUT BSA and Azide at 1.0mg/ml	100 ug

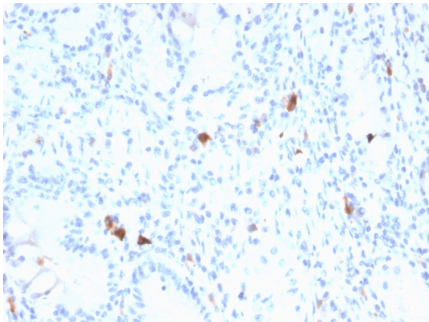
Applications	Tested Dillution	Note
--------------	------------------	------

Product Details

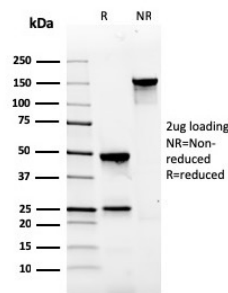
Clone	GAST/2634
Gene Name	GAST
Immunogen	Recombinant full-length human GAST protein
Host	Mouse
Clonality	Monoclonal
Isotype / Light Chain	IgG1 / Kappa
Mol. Weight of Antigen	2/4/14kDa
Cellular Localization	Secreted
Species Reactivity	Human
Positive Control	Human Pituitary or Stomach.

**Optimal dilution for a specific application should be determined.*

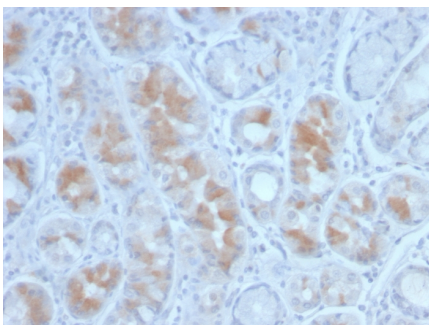
Product Images for Gastrin Antibody



Formalin-fixed, paraffin-embedded human Stomach stained with Gastrin Mouse Monoclonal Antibody (GAST/2634).



SDS-PAGE Analysis of Purified Gastrin Mouse Monoclonal Antibody (GAST/2634). Confirmation of Integrity and Purity of Antibody.



Formalin-fixed, paraffin-embedded human Stomach stained with Gastrin Mouse Monoclonal Antibody (GAST/2634).

Specificity & Comments

Gastrin, is a hormone that normally formed by mucosal cells in the gastric antrum and by the D cells of the pancreatic islets. Its primary function is to stimulate secretion of HCl by the gastric mucosa. HCl, in turn, inhibits gastrin formation. It also responsible for stimulating smooth muscle contraction and increasing blood circulation and water secretion in the stomach and intestine. Gastrin is regulated by epidermal growth factor in both mice and humans. Gastrin is excreted in excess by pancreatic tumors in the Zollinger-Ellison syndrome. Gastrin-Releasing Peptide (GRP) stimulates the release of gastrin as well as other gastrointestinal hormones and also acts as an autocrine growth factor for certain cell types. High levels of GRP are found in the human lung just after birth and levels decrease thereafter in parallel with the observed disease in a number of pulmonary neuroendocrine cells. GRP is known to promote lung tumorigenesis in model systems.

Limitations and Warranty

This antibody is available for research use only and is not approved for use in diagnosis. There are no warranties, expressed or implied, which extend beyond this description. Company is not liable for any personal injury or economic loss resulting from this product.

Supplied As

200ug/ml of Ab Purified from Bioreactor Concentrate by Protein A/G. Prepared in 10mM PBS with 0.05% BSA & 0.05% azide. Also available WITHOUT BSA & azide at 1.0mg/ml.

Storage and Stability

Antibody with azide - store at 2 to 8°C. Antibody without azide - store at -20 to -80°C. Antibody is stable for 24 months. Non-hazardous. No MSDS required.

Research Areas

Signal Transduction
