

CD15 / FUT4 (Reed-Sternberg Cell Marker) Antibody

Mouse Monoclonal Antibody [Clone Leu-M1; same as MMA]

Catalog No	Format	Size
2526-MSM1-P0	Purified Ab with BSA and Azide at 200ug/ml	20 ug
2526-MSM1-P1	Purified Ab with BSA and Azide at 200ug/ml	100 ug
2526-MSM1-P1BX	Purified Ab WITHOUT BSA at 1.0mg/ml	100 ug

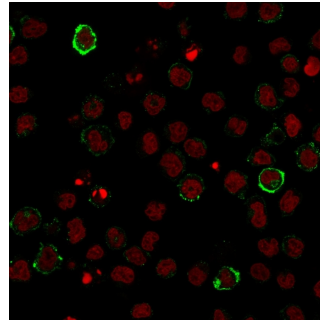
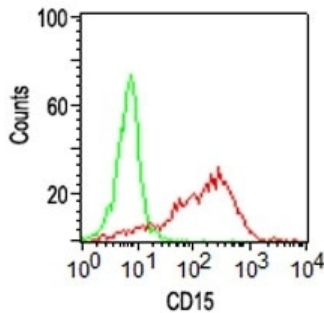
Applications	Tested Dillution	Note
Flow Cytometry (Flow)	1-2ug/million cells	
Immunofluorescence (IF)	1-3ug/ml	
Immunohistochemistry (IHC)	1-2ug/ml	30 min at RT. Staining of formalin-fixed tissues requires heating tissue sections in 10mM Tris with 1mM EDTA, pH 9.0, for 45 min at 95°C followed by cooling at RT for 20 minutes

Product Details

Clone	Leu-M1; same as MMA
Gene Name	FUT4
Immunogen	U937 histiocytic cell line
Host	Mouse
Clonality	Monoclonal
Isotype / Light Chain	IgM / Kappa
Mol. Weight of Antigen	220kDa
Cellular Localization	Golgi apparatus, Golgi stack membrane
Species Reactivity	Human
Positive Control	Reed-Sternberg's cells in Hodgkin's lymphoma., U937 cells

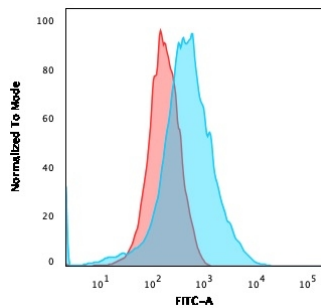
*Optimal dilution for a specific application should be determined.

Product Images for CD15 / FUT4 (Reed-Sternberg Cell Marker) Antibody

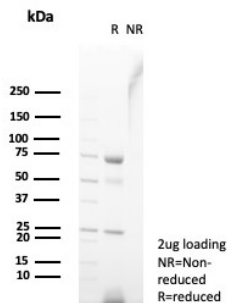


FACS analysis of human Monocytes using CD15 Monoclonal Antibody (LeuM1).

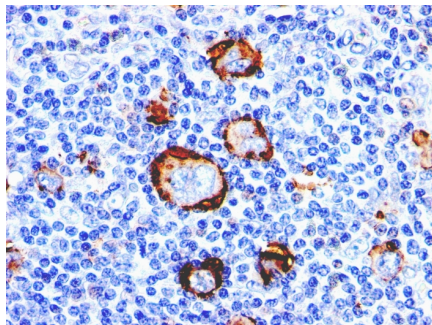
Immunofluorescence staining of U937 cells using CD15 Monoclonal Antibody (Leu-M1) followed by goat anti-Mouse IgG conjugated to CF488 (green). Nuclei are stained with Reddot.



Flow Cytometric Analysis of U937 cells using CD15 MAb (Leu-M1) followed by goat anti-Mouse IgG-CF488 (Blue); Isotype Control (Red).



SDS-PAGE Analysis of Purified CD15 Mouse Monoclonal Antibody (MMA / Leu-M1). Confirmation of Purity and Integrity of Antibody.



Formalin-fixed, paraffin-embedded human Hodgkin's Lymphoma stained with CD15 Monoclonal Antibody (Leu-M1).

Specificity & Comments

CD15 plays a role in mediating phagocytosis, bactericidal activity, and chemotaxis. It is present on s disease. CD15 is occasionally expressed in large cell lymphomas of both B and T phenotypes which otherwise have a quite distinct histological appearance.

Supplied As

200ug/ml of Ab Purified from Bioreactor Concentrate. Prepared in 10mM PBS with 0.05% BSA & 0.05% azide. Also available WITHOUT BSA & azide at 1.0mg/ml.

Storage and Stability

Antibody with azide - store at 2 to 8°C. Antibody without azide - store at -20 to -80°C. Antibody is stable for 24 months. Non-hazardous. No MSDS required.

Research Areas

Cardiac Stem Cells

Limitations and Warranty

This antibody is available for research use only and is not approved for use in diagnosis. There are no warranties, expressed or implied, which extend beyond this description. Company is not liable for any personal injury or economic loss resulting from this product.