

Recombinant CD15 / FUT4 (Reed-Sternberg Cell Marker) Antibody

Rabbit Monoclonal Antibody [Clone FUT4/1478R]

Catalog No	Format	Size
2526-RBM8-P0	Purified Ab with BSA and Azide at 200ug/ml	20 ug
2526-RBM8-P1	Purified Ab with BSA and Azide at 200ug/ml	100 ug
2526-RBM8-P1ABX	Purified Ab WITHOUT BSA and Azide at 1.0mg/ml	100 ug

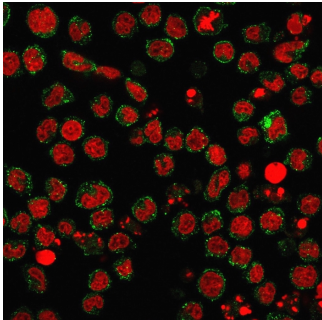
Applications	Tested Dillution	Note
Flow Cytometry (Flow)	1-2ug/million cells	
Immunofluorescence (IF)	1-3ug/ml	
Immunohistochemistry (IHC)	1-2ug/ml	30 min at RT. Staining of formalin-fixed tissues requires heating tissue sections in 10mM Tris with 1mM EDTA, pH 9.0, for 45 min at 95°C followed by cooling at RT for 20 minutes

Product Details

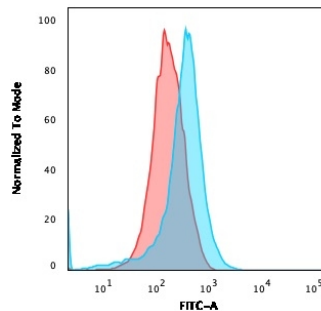
Clone	FUT4/1478R
Gene Name	FUT4
Immunogen	Recombinant human full-length CD15 protein
Host	Rabbit
Clonality	Monoclonal
Isotype / Light Chain	IgG / Kappa
Mol. Weight of Antigen	220kDa
Cellular Localization	Golgi apparatus, Golgi stack membrane
Species Reactivity	Human, Mouse, Rat
Positive Control	Reed-Sternberg's cells in Hodgkin's lymphoma., U937 cells

*Optimal dilution for a specific application should be determined.

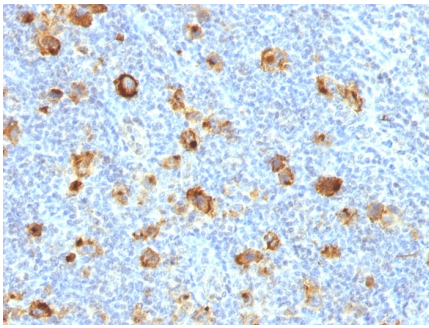
Product Images for Recombinant CD15 / FUT4 (Reed-Sternberg Cell Marker) Antibody



Immunofluorescence staining of U937 cells using CD15 Rabbit Recombinant Monoclonal Antibody (FUT4/1478R) followed by goat anti-Mouse IgG conjugated to CF488 (green). Nuclei are stained with Reddot.



Flow Cytometric Analysis of U937 cells using CD15 Rabbit Recombinant Monoclonal Antibody (FUT4/1478R) followed by goat anti-rabbit IgG-CF488 (Blue); Isotype Control (Red).



Formalin-fixed, paraffin-embedded human Hodgkin's Lymphoma stained with CD15 Rabbit Recombinant Monoclonal Antibody (FUT4/1478R).

Specificity & Comments

CD15 plays a role in mediating phagocytosis, bactericidal activity, and chemotaxis. It is present on s disease. CD15 is occasionally expressed in large cell lymphomas of both B and T phenotypes which otherwise have a quite distinct histological appearance.

Supplied As

200ug/ml of Ab Purified by Protein A Column. Prepared in 10mM PBS with 0.05% BSA & 0.05% azide. Also available WITHOUT BSA & Azide at 1.0mg/ml.

Storage and Stability

Antibody with azide - store at 2 to 8°C. Antibody without azide - store at -20 to -80°C. Antibody is stable for 24 months. Non-hazardous. No MSDS required.

Research Areas

Cardiac Stem Cells

Limitations and Warranty

This antibody is available for research use only and is not approved for use in diagnosis. There are no warranties, expressed or implied, which extend beyond this description. Company is not liable for any personal injury or economic loss resulting from this product.
