

GFAP (Astrocyte & Neural Stem Cell Marker) Antibody

Mouse Monoclonal Antibody [Clone SPM248]

Catalog No	Format	Size
2670-MSM1X-P0	Purified Ab with BSA and Azide at 200ug/ml	20 ug
2670-MSM1X-P1	Purified Ab with BSA and Azide at 200ug/ml	100 ug
2670-MSM1X-P1ABX	Purified Ab WITHOUT BSA and Azide at 1.0mg/ml	100 ug

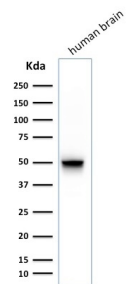
Applications	Tested Dillution	Note
Flow Cytometry (Flow)	1-2ug/million cells	
Immunofluorescence (IF)	1-3ug/ml	
Immunohistochemistry (IHC)	1-2ug/ml	30 min at RT. Staining of formalin-fixed tissues requires heating tissue sections in 10mM Tris with 1mM EDTA, pH 9.0, for 45 min at 95°C followed by cooling at RT for 20 minutes
Western Blot (WB)	2-4ug/ml	

Product Details

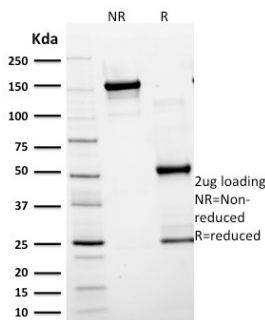
Clone	SPM248
Gene Name	GFAP
Immunogen	GFAP isolated from pig spinal cord
Host	Mouse
Clonality	Monoclonal
Isotype / Light Chain	IgG1 / Kappa
Mol. Weight of Antigen	~50kDa
Cellular Localization	Cytoplasm
Species Reactivity	Chicken, Cow, Human, Mouse, Pig, Rabbit, Rat
Positive Control	T98G cells (FACS). Brain lysate (WB). Brain or Astrocytoma (IHC).

*Optimal dilution for a specific application should be determined.

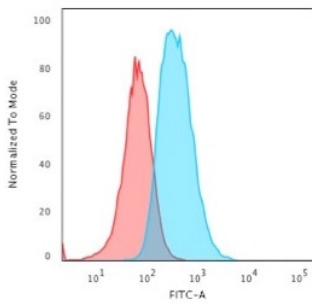
Product Images for GFAP (Astrocyte & Neural Stem Cell Marker) Antibody



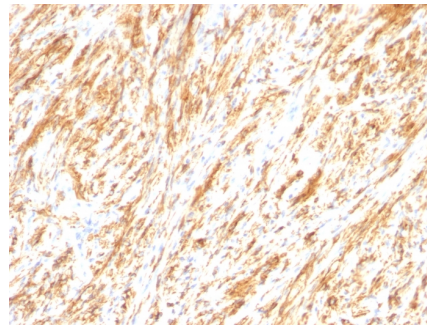
Western Blot Analysis of human brain tissue lysate using GFAP Monoclonal Antibody (SPM248).



SDS-PAGE Analysis of Purified GFAP Monoclonal Antibody (SPM248). Confirmation of Integrity and Purity of Antibody.



Flow Cytometric Analysis of T98G cells using GFAP Mouse Monoclonal Antibody (SPM248) followed by Goat anti-Mouse IgG-CF488 (Blue); Isotype Control (Red).



Formalin-fixed, paraffin-embedded human Schwannoma stained with GFAP Monoclonal Antibody (SPM248).

Specificity & Comments

This MAb recognizes a protein of ~50kDa which is identified as Glial Fibrillary Acidic Protein (GFAP). It shows no cross-reaction with other intermediate filament proteins. GFAP is specifically found in astroglia. GFAP is a very popular marker for localizing benign astrocyte and neoplastic cells of glial origin in the central nervous system. Antibody to GFAP is useful in differentiating primary gliomas from metastatic lesions in the brain and for documenting astrocytic differentiation in tumors outside the CNS.

Supplied As

200ug/ml of Ab Purified from Bioreactor Concentrate by Protein A/G. Prepared in 10mM PBS with 0.05% BSA & 0.05% azide. Also available WITHOUT BSA & azide at 1.0mg/ml.

Storage and Stability

Antibody with azide - store at 2 to 8°C. Antibody without azide - store at -20 to -80°C. Antibody is stable for 24 months. Non-hazardous. No MSDS required.

Research Areas

Cardiovascular, Neuroscience, Endothelial Cell Marker, Neural Stem Cells, Neuroinflammation, Signal Transduction

Limitations and Warranty

This antibody is available for research use only and is not approved for use in diagnosis. There are no warranties, expressed or implied, which extend beyond this description. Company is not liable for any personal injury or economic loss resulting from this product.