

Recombinant FOXP1 (Transcription Factor) Antibody

Mouse Monoclonal Antibody [Clone rFOXP1/6902]

Catalog No	Format	Size
27086-MSM2-P0	Purified Ab with BSA and Azide at 200ug/ml	20 ug
27086-MSM2-P1	Purified Ab with BSA and Azide at 200ug/ml	100 ug
27086-MSM2-P1ABX	Purified Ab WITHOUT BSA and Azide at 1.0mg/ml	100 ug

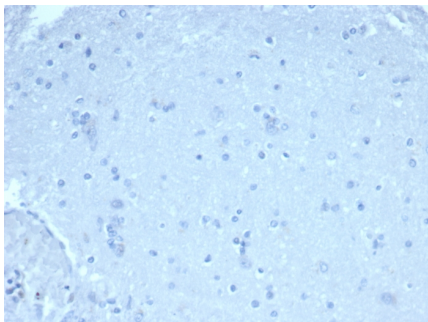
Applications	Tested Dillution	Note
Immunohistochemistry (IHC)	1-2ug/ml	30 min at RT. Staining of formalin-fixed tissues requires heating tissue sections in 10mM Tris with 1mM EDTA, pH 9.0, for 45 min at 95°C followed by cooling at RT for 20 minutes

Product Details

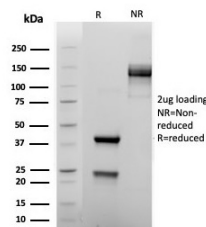
Clone	rFOXP1/6902
Gene Name	FOXP1
Immunogen	Recombinant fragment (around aa350-450) of human FOXP1 protein (exact sequence is proprietary)
Host	Mouse
Clonality	Monoclonal
Isotype / Light Chain	IgG1 / Kappa
Mol. Weight of Antigen	75kDa
Cellular Localization	Nucleus
Species Reactivity	Human
Positive Control	Human tonsil or colon.

*Optimal dilution for a specific application should be determined.

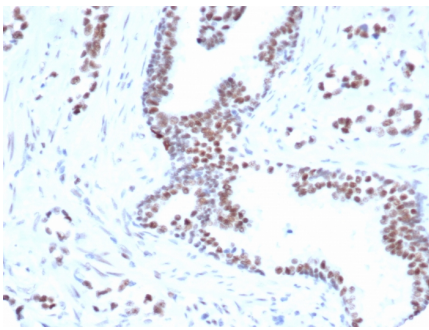
Product Images for Recombinant FOXP1 (Transcription Factor) Antibody



IHC analysis of formalin-fixed, paraffin-embedded human brain. Negative tissue control. rFOXP1/6902 at 1ug/ml in PBS for 30min RT. HIER: Tris/EDTA, pH9.0, 45min. 2°C: HRP-polymer, 30min. DAB, 5min.



SDS-PAGE Analysis of Purified FOXP1 Recombinant Mouse Monoclonal Antibody (rFOXP1/6902). Confirmation of Purity and Integrity of Antibody.



Formalin-fixed, paraffin-embedded human prostate carcinoma stained with FOXP1 Recombinant Mouse Monoclonal Antibody (rFOXP1/6902) [1ug/ml in PBS] for 30min RT. HIER: Tris/EDTA, pH9.0, 45min. 2°C: HRP-polymer, 30min. DAB, 5min

Specificity & Comments

Transcriptional repressor. It plays an important role in the specification and differentiation of lung epithelium. Can act with CTBP1 to synergistically repress transcription but CTPBP1 is not essential. Essential transcriptional regulator of B cell development. FOXP1 protein plays an important role in the specification and differentiation of lung epithelium, also acts cooperatively with FOXP4 to regulate lung secretory epithelial cell fate and regeneration by restricting the goblet cell lineage program. FOXP1 is useful in subclassification of DLBCL and a high cutoff (? ?80%) for FOXP1 is needed to achieve high specificity for the ABC subtype.

Limitations and Warranty

This antibody is available for research use only and is not approved for use in diagnosis. There are no warranties, expressed or implied, which extend beyond this description. Company is not liable for any personal injury or economic loss resulting from this product.

Supplied As

200ug/ml of Ab purified from Bioreactor Concentrate by Protein A/G. Prepared in 10mM PBS with 0.05% BSA & 0.05% azide. Also available WITHOUT BSA & azide at 1.0mg/ml.

Storage and Stability

Antibody with azide - store at 2 to 8 °C. Antibody without azide - store at -20 to -80 °C. Antibody is stable for 24 months. Non-hazardous. No MSDS required.

Research Areas

Cardiovascular, Developmental Biology, B Cell Markers, Nuclear Marker
