

## Glutamate-Cysteine Ligase Regulatory Subunit Antibody

Mouse Monoclonal Antibody [Clone CPTC-GCLM-1]

Catalog No	Format	Size
2730-MSM1-P0	Purified Ab with BSA and Azide at 200ug/ml	20 ug
2730-MSM1-P1	Purified Ab with BSA and Azide at 200ug/ml	100 ug
2730-MSM1-P1ABX	Purified Ab WITHOUT BSA and Azide at 1.0mg/ml	100 ug

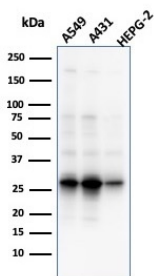
Applications	Tested Dillution	Note
Immunohistochemistry (IHC)	1-2ug/ml	30 min at RT. Staining of formalin-fixed tissues requires heating tissue sections in 10mM Tris with 1mM EDTA, pH 9.0, for 45 min at 95°C followed by cooling at RT for 20 minutes
Western Blot (WB)	2-4ug/ml	

### Product Details

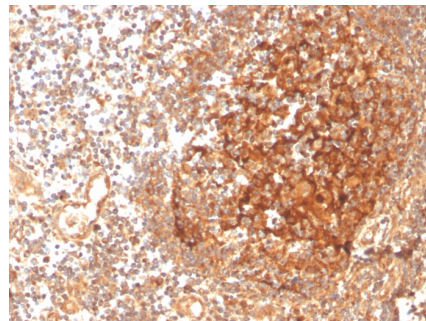
<b>Clone</b>	CPTC-GCLM-1
<b>Gene Name</b>	GCLM
<b>Immunogen</b>	Recombinant human full-length GCLM protein
<b>Host</b>	Mouse
<b>Clonality</b>	Monoclonal
<b>Isotype / Light Chain</b>	IgG2a / Kappa
<b>Mol. Weight of Antigen</b>	31kDa
<b>Species Reactivity</b>	Human
<b>Positive Control</b>	A549, HepG2 or HeLa cell lysates. Human muscle and liver tissue.

\*Optimal dilution for a specific application should be determined.

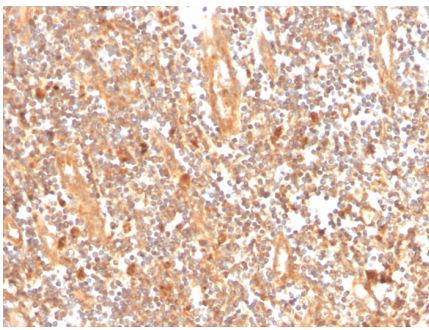
### Product Images for Glutamate-Cysteine Ligase Regulatory Subunit Antibody



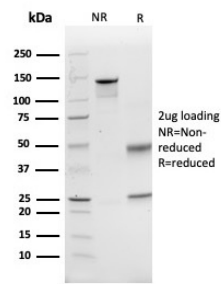
Western Blot Analysis of A549, A431 & HepG2 cell lysates using GCLM Mouse Monoclonal Antibody (CPTC-GCLM-1).



Formalin-fixed, paraffin-embedded human tonsil stained with GCLM Mouse Monoclonal Antibody (CPTC-GCLM-1).



Formalin-fixed, paraffin-embedded human tonsil stained with GCLM Mouse Monoclonal Antibody (CPTC-GCLM-1).



SDS-PAGE Analysis of Purified GCLM Mouse Monoclonal Antibody (CPTC-GCLM-1). Confirmation of Integrity and Purity of Antibody.

### Specificity & Comments

GCLM known as gamma-glutamylcysteine synthetase, is the first rate limiting enzyme of glutathione synthesis. The enzyme consists of two subunits, a heavy catalytic subunit and a light regulatory subunit. Gamma glutamylcysteine synthetase deficiency has been implicated in some forms of hemolytic anemia.

### Supplied As

200ug/ml of Ab purified from Bioreactor Concentrate by Protein A/G. Prepared in 10mM PBS with 0.05% BSA & 0.05% azide. Also available WITHOUT BSA & azide at 1.0mg/ml.

### Storage and Stability

Antibody with azide - store at 2 to 8°C. Antibody without azide - store at -20 to -80°C. Antibody is stable for 24 months. Non-hazardous. No MSDS required.

### Research Areas

Cardiovascular, Infectious Disease, Nuclear Marker

### Limitations and Warranty

This antibody is available for research use only and is not approved for use in diagnosis. There are no warranties, expressed or implied, which extend beyond this description. Company is not liable for any personal injury or economic loss resulting from this product.