

## Galectin-13 (GAL13) / Placental Protein 13 (PP13) Antibody

Mouse Monoclonal Antibody [Clone PP13/1165]

Catalog No	Format	Size
29124-MSM5-P0	Purified Ab with BSA and Azide at 200ug/ml	20 ug
29124-MSM5-P1	Purified Ab with BSA and Azide at 200ug/ml	100 ug
29124-MSM5-P1ABX	Purified Ab WITHOUT BSA and Azide at 1.0mg/ml	100 ug

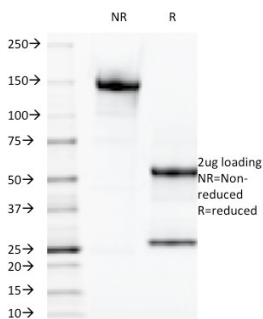
Applications	Tested Dillution	Note
Immunohistochemistry (IHC)	1-2ug/ml	30 min at RT. Staining of formalin-fixed tissues requires heating tissue sections in 10mM Tris with 1mM EDTA, pH 9.0, for 45 min at 95°C followed by cooling at RT for 20 minutes

### Product Details

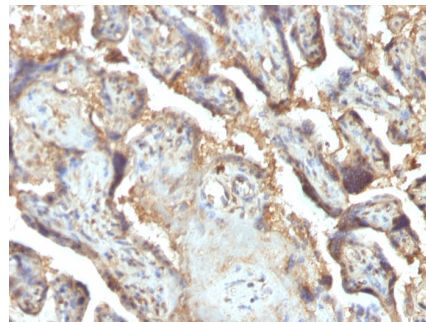
<b>Clone</b>	PP13/1165
<b>Gene Name</b>	LGALS13
<b>Immunogen</b>	Recombinant human Galectin-13 protein fragment (aa23-134)
<b>Host</b>	Mouse
<b>Clonality</b>	Monoclonal
<b>Isotype / Light Chain</b>	IgG2b / Kappa
<b>Mol. Weight of Antigen</b>	16kDa (monomer); 32kDa (homodimer)
<b>Cellular Localization</b>	Cytoplasm, Nucleus matrix
<b>Species Reactivity</b>	Human
<b>Positive Control</b>	K-562 cells. Placenta or Spleen.

\*Optimal dilution for a specific application should be determined.

### Product Images for Galectin-13 (GAL13) / Placental Protein 13 (PP13) Antibody



SDS-PAGE Analysis of Purified Galectin-13 / PP13 Monoclonal Antibody (PP13/1165) Confirmation of Purity and Integrity of Antibody.



Formalin-fixed, paraffin-embedded human Placenta stained with Galectin-13 / PP13 Monoclonal Antibody (PP13/1165)

### Specificity & Comments

It recognizes a 32kDa protein, which is identified as homodimer of galectin-13 (also known as PP13). Galectins are a family of soluble -galactoside-binding lectins that modulate cell-to-cell adhesion and cell-to-extracellular matrix (ECM) interactions and play a role in tumor progression, pre-mRNA splicing and apoptosis. One such member, galectin-13, is a 139 amino acid protein that contains one galectin domain. Possessing lysophospholipase activity, galectin-13 exists as a disulfide-linked homodimer. Galectin-13 is suggested to have a developmental role in the placenta and may display immunobiological activity in feto-maternal blood-spaces. Screening for galectin-13 in maternal serum during the first trimester of pregnancy may serve as a diagnostic marker to predict preterm pre-eclampsia.

2 Union Square, Union City, CA 94587, Tel: 1-866-2-NEOBIO (1-866-263-6246) —  
orders@NeoBiotechnologies.com, www.NeoBiotechnologies.com

### Supplied As

200ug/ml of Ab Purified from Bioreactor Concentrate by Protein A/G. Prepared in 10mM PBS with 0.05% BSA & 0.05% azide. Also available WITHOUT BSA & azide at 1.0mg/ml.

### Storage and Stability

Antibody with azide - store at 2 to 8°C. Antibody without azide - store at -20 to -80°C. Antibody is stable for 24 months. Non-hazardous. No MSDS required.

### Research Areas

Cardiovascular, Nuclear Marker

## Limitations and Warranty

This antibody is available for research use only and is not approved for use in diagnosis. There are no warranties, expressed or implied, which extend beyond this description. Company is not liable for any personal injury or economic loss resulting from this product.

---