

## Glutathione S-Transferase Mu2 (GSTM2) Antibody

Mouse Monoclonal Antibody [Clone CPTC-GSTMu2-2]

Catalog No	Format	Size
2946-MSM1-P0	Purified Ab with BSA and Azide at 200ug/ml	20 ug
2946-MSM1-P1	Purified Ab with BSA and Azide at 200ug/ml	100 ug
2946-MSM1-P1ABX	Purified Ab WITHOUT BSA and Azide at 1.0mg/ml	100 ug

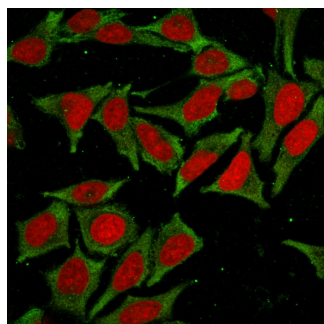
Applications	Tested Dillution	Note
Flow Cytometry (Flow)	1-2ug/million cells	
Immunofluorescence (IF)	1-3ug/ml	
Immunohistochemistry (IHC)	1-2ug/ml	30 min at RT. Staining of formalin-fixed tissues requires heating tissue sections in 10mM Tris with 1mM EDTA, pH 9.0, for 45 min at 95°C followed by cooling at RT for 20 minutes
Western Blot (WB)	2-4ug/ml	

### Product Details

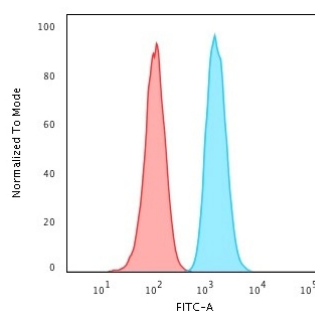
<b>Clone</b>	CPTC-GSTMu2-2
<b>Gene Name</b>	GSTM2
<b>Immunogen</b>	Recombinant human full-length GSTMu2 protein
<b>Host</b>	Mouse
<b>Clonality</b>	Monoclonal
<b>Isotype / Light Chain</b>	IgG1 / Kappa
<b>Mol. Weight of Antigen</b>	predicted: 26kDa; observed: 28kDA
<b>Cellular Localization</b>	Cytoplasm
<b>Species Reactivity</b>	Human
<b>Positive Control</b>	HeLa cell lysate. Skeletal muscle extract. Human kidney.

\*Optimal dilution for a specific application should be determined.

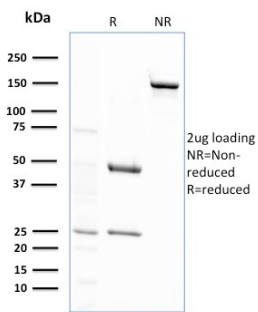
### Product Images for Glutathione S-Transferase Mu2 (GSTM2) Antibody



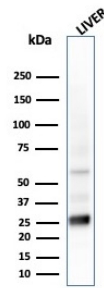
Immunofluorescence Analysis of MeOH-fixed HeLa cells labeling GSTMu2 with GSTMu2 Mouse Monoclonal Antibody (CPTC-GSTMu2-2) followed by Goat anti-Mouse IgG-CF488 (Green). The nuclear counterstain is Reddot (Red).



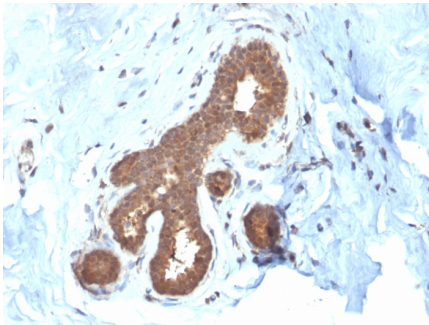
Flow Cytometric Analysis of PFA-fixed HeLa cells using GSTMu2 Mouse Monoclonal Antibody (CPTC-GSTMu2-2) followed by Goat anti-Mouse IgG-CF488 (Blue); Isotype Control (Red).



SDS-PAGE Analysis Purified GSTMu2 Mouse Monoclonal Antibody (CPTC-GSTMu2-2). Confirmation of Purity and Integrity of Antibody.



Western Blot Analysis of liver tissue lysate using GSTMu2 Mouse Monoclonal Antibody (CPTC-GSTMu2-2).



Formalin-fixed, paraffin-embedded human Breast Carcinoma stained with GSTMu2 Mouse Monoclonal Antibody (CPTC-GSTMu2-2).

## Specificity & Comments

## Supplied As

200ug/ml of Ab Purified from Bioreactor Concentrate by Protein A/G. Prepared in 10mM PBS with 0.05% BSA & 0.05% azide. Also available WITHOUT BSA & azide at 1.0mg/ml.

## Storage and Stability

Antibody with azide - store at 2 to 8°C. Antibody without azide - store at -20 to -80°C. Antibody is stable for 24 months. Non-hazardous. No MSDS required.

## Research Areas

Cardiovascular

## Limitations and Warranty

This antibody is available for research use only and is not approved for use in diagnosis. There are no warranties, expressed or implied, which extend beyond this description. Company is not liable for any personal injury or economic loss resulting from this product.