

## Recombinant Glycophorin A / CD235a (Erythrocyte Marker) Antibody

Mouse Monoclonal Antibody [Clone rGYPA/280]

Catalog No	Format	Size
2993-MSM8-P0	Purified Ab with BSA and Azide at 200ug/ml	20 ug
2993-MSM8-P1	Purified Ab with BSA and Azide at 200ug/ml	100 ug
2993-MSM8-P1ABX	Purified Ab WITHOUT BSA and Azide at 1.0mg/ml	100 ug

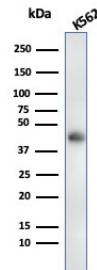
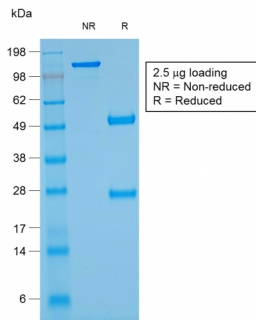
Applications	Tested Dillution	Note
Immunohistochemistry (IHC)	1-2ug/ml	30 min at RT. Staining of formalin-fixed tissues requires heating tissue sections in 10mM Tris with 1mM EDTA, pH 9.0, for 45 min at 95°C followed by cooling at RT for 20 minutes
Western Blot (WB)	2-4ug/ml	

### Product Details

<b>Clone</b>	rGYPA/280
<b>Gene Name</b>	GYPA
<b>Immunogen</b>	Recombinant full-length human glycophorin A protein
<b>Host</b>	Mouse
<b>Clonality</b>	Monoclonal
<b>Isotype / Light Chain</b>	IgG1 / Kappa
<b>Mol. Weight of Antigen</b>	39kDa
<b>Cellular Localization</b>	Cell membrane
<b>Species Reactivity</b>	Human
<b>Positive Control</b>	Erythrocytes in any human tissues. K562 cell lysate.

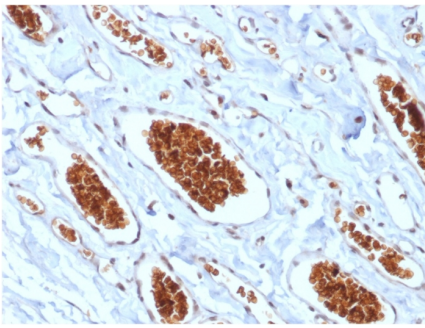
\*Optimal dilution for a specific application should be determined.

### Product Images for Recombinant Glycophorin A / CD235a (Erythrocyte Marker) Antibody



SDS-PAGE Analysis of Purified Glycophorin A Mouse Recombinant Monoclonal Ab (rGYPA/280). Confirmation of Purity and Integrity of Antibody.

Western Blot Analysis of K562 cell lysate using Glycophorin A Mouse Recombinant Monoclonal Antibody (rGYPA/280).



Formalin-fixed, paraffin-embedded human Angiosarcoma stained with Glycophorin A Mouse Recombinant Monoclonal Antibody (rGYPA/280).

---

### Specificity & Comments

Recognizes a sialoglycoprotein of 39kDa, identified as glycophorin A (GPA). It is present on red blood cells (RBC) and erythroid precursor cells. It has been shown that glycophorin acts as the receptor for Sandei virus and parvovirus. Glycophorins A (GPA) and B (GPB), which are single, trans-membrane sialoglycoproteins. GPA is the carrier of blood group M and N specificities, while GPB accounts for S and U specificities. GPA and GPB provide the cells with a large mucin like surface and it has been suggested this provides a barrier to cell fusion, so minimizing aggregation between red blood cells in the circulation.

---

### Limitations and Warranty

This antibody is available for research use only and is not approved for use in diagnosis. There are no warranties, expressed or implied, which extend beyond this description. Company is not liable for any personal injury or economic loss resulting from this product.

---

### Supplied As

200ug/ml of Ab Purified from Bioreactor Concentrate by Protein A/G. Prepared in 10mM PBS with 0.05% BSA & 0.05% azide. Also available WITHOUT BSA & azide at 1.0mg/ml.

---

### Storage and Stability

Antibody with azide - store at 2 to 8°C. Antibody without azide - store at -20 to -80°C. Antibody is stable for 24 months. Non-hazardous. No MSDS required.

---