

Recombinant Glycophorin A / CD235a (Erythrocyte Marker) Antibody

Rabbit Monoclonal Antibody [Clone GYPA/3219R]

Catalog No	Format	Size
2993-RBM9-P0	Purified Ab with BSA and Azide at 200ug/ml	20 ug
2993-RBM9-P1	Purified Ab with BSA and Azide at 200ug/ml	100 ug
2993-RBM9-P1ABX	Purified Ab WITHOUT BSA and Azide at 1.0mg/ml	100 ug

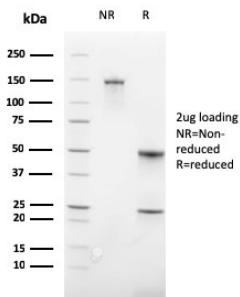
Applications	Tested Dillution	Note
Immunohistochemistry (IHC)	1-2ug/ml	30 min at RT. Staining of formalin-fixed tissues requires heating tissue sections in 10mM Tris with 1mM EDTA, pH 9.0, for 45 min at 95°C followed by cooling at RT for 20 minutes

Product Details

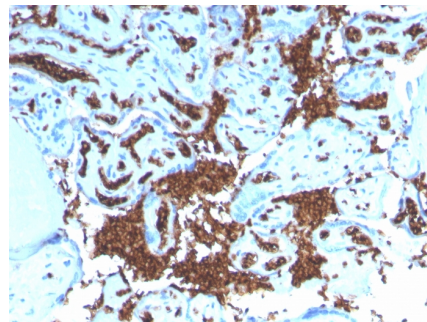
Clone	GYPA/3219R
Gene Name	GYPA
Immunogen	Recombinant full-length human GYPA protein
Host	Rabbit
Clonality	Monoclonal
Isotype / Light Chain	IgG / Kappa
Mol. Weight of Antigen	39kDa
Cellular Localization	Cell membrane
Species Reactivity	Human
Positive Control	Erythrocytes in any human tissues.

*Optimal dilution for a specific application should be determined.

Product Images for Recombinant Glycophorin A / CD235a (Erythrocyte Marker) Antibody



SDS-PAGE Analysis of Purified CD235a Recombinant Rabbit Monoclonal Antibody (GYPA/3219R). Confirmation of Integrity and Purity of Antibody.



Formalin-fixed, paraffin-embedded human Placenta stained with Glycophorin A Recombinant Rabbit Monoclonal Antibody (GYPA/3219R).

Specificity & Comments

Recognizes a sialoglycoprotein of 39kDa, identified as glycophorin A (GPA). It is present on red blood cells (RBC) and erythroid precursor cells. It has been shown that glycophorin acts as the receptor for Sandei virus and parvovirus. Glycophorins A (GPA) and B (GPB), which are single, trans-membrane sialoglycoproteins. GPA is the carrier of blood group M and N specificities, while GPB accounts for S and U specificities. GPA and GPB provide the cells with a large mucin like surface and it has been suggested this provides a barrier to cell fusion, so minimizing aggregation between red blood cells in the circulation.

Supplied As

200ug/ml of Ab Purified from Bioreactor Concentrate by Protein A/G. Prepared in 10mM PBS with 0.05% BSA & 0.05% azide. Also available WITHOUT BSA & azide at 1.0mg/ml.

Storage and Stability

Antibody with azide - store at 2 to 8°C. Antibody without azide - store at -20 to -80°C. Antibody is stable for 24 months. Non-hazardous. No MSDS required.

Limitations and Warranty

This antibody is available for research use only and is not approved for use in diagnosis. There are no warranties, expressed or implied, which extend beyond this description. Company is not liable for any personal injury or economic loss resulting from this product.
