

Recombinant FOXA1 / HNF3A Antibody

Mouse Monoclonal Antibody [Clone rFOXA1/1515]

Catalog No	Format	Size
3169-MSM11-P0	Purified Ab with BSA and Azide at 200ug/ml	20 ug
3169-MSM11-P1	Purified Ab with BSA and Azide at 200ug/ml	100 ug
3169-MSM11-P1ABX	Purified Ab WITHOUT BSA and Azide at 1.0mg/ml	100 ug

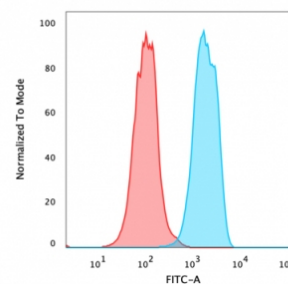
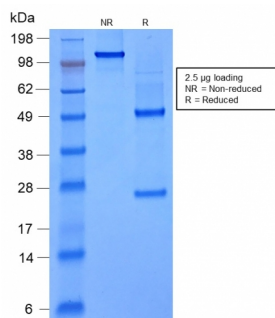
Applications	Tested Dillution	Note
Flow Cytometry (Flow)	1-2ug/million cells	
Immunohistochemistry (IHC)	1-2ug/ml	30 min at RT. Staining of formalin-fixed tissues requires heating tissue sections in 10mM Tris with 1mM EDTA, pH 9.0, for 45 min at 95°C followed by cooling at RT for 20 minutes

Product Details

Clone	rFOXA1/1515
Gene Name	FOXA1
Immunogen	Recombinant human FOXA1 protein fragment (around aa372-472) (exact sequence is proprietary)
Host	Mouse
Clonality	Monoclonal
Isotype / Light Chain	IgG1 / Kappa
Mol. Weight of Antigen	49kDa
Cellular Localization	Nucleus
Species Reactivity	Human, Rat
Positive Control	Bladder, Colon and Lung and Breast., HeLa, HepG-2 or MCF-7 cells. Liver, Pancreas, prostate

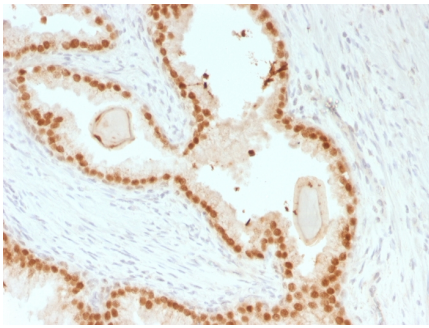
*Optimal dilution for a specific application should be determined.

Product Images for Recombinant FOXA1 / HNF3A Antibody



SDS-PAGE Analysis of Purified FOXA1 Mouse Recombinant Monoclonal Antibody (rFOXA1/1515). Confirmation of Purity and Integrity of Antibody.

Flow Cytometric Analysis of PFA-fixed permeabilised MCF-7 cells using FOXA1 Mouse Recombinant Monoclonal Antibody (rFOXA1/1515). followed by goat anti-mouse IgG-CF488 (Blue); Isotype Control (Red).



Formalin-fixed, paraffin-embedded human Prostate Carcinoma stained with FOXA1 Mouse Recombinant Monoclonal Antibody (rFOXA1/1515).

Specificity & Comments

The transcription factor Forkhead-box A1 (FOXA1), also known as hepatocyte nuclear factor 3-alpha, is a member of the FOX class of transcription factors. HNF-1 (β), and HNF-6 compose, in part, a homeoprotein family designated the hepatocyte nuclear factor family. The various HNF-1 isoforms regulate transcription of genes in the liver as well as in other tissues such as kidney, small intestine and thymus. FOXA1 is expressed in normal breast ductal epithelium and other epithelium in different organs, such as lung, pancreas, bladder, prostate, and colon. Recently, FOXA1 has been shown to be a major determinant of estrogen-ER activity and endocrine response in breast cancer cells. FOXA1 expression correlates with estrogen receptor (ER)-positivity, especially in luminal subtype A breast cancers, which is associated with favorable prognosis. FOXA1 is useful in the sub-classification of breast carcinomas.

Limitations and Warranty

This antibody is available for research use only and is not approved for use in diagnosis. There are no warranties, expressed or implied, which extend beyond this description. Company is not liable for any personal injury or economic loss resulting from this product.

Supplied As

200ug/ml of Ab Purified from Bioreactor Concentrate by Protein A/G. Prepared in 10mM PBS with 0.05% BSA & 0.05% azide. Also available WITHOUT BSA & azide at 1.0mg/ml.

Storage and Stability

Antibody with azide - store at 2 to 8°C. Antibody without azide - store at -20 to -80°C. Antibody is stable for 24 months. Non-hazardous. No MSDS required.

Research Areas

Cancer, Developmental Biology, Nuclear Marker, Signal Transduction, Stem Cell Differentiation