

Tenascin C (Stromal Marker for Epithelial Malignancy) Antibody

Mouse Monoclonal Antibody [Clone SPM319]

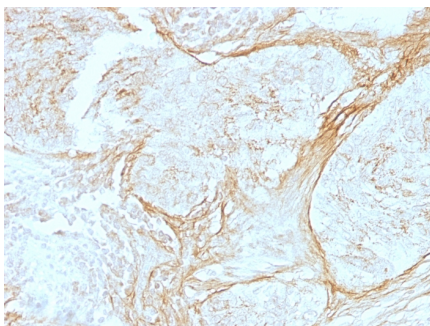
Catalog No	Format	Size
3371-MSM1X-P0	Purified Ab with BSA and Azide at 200ug/ml	20 ug
3371-MSM1X-P1	Purified Ab with BSA and Azide at 200ug/ml	100 ug
3371-MSM1X-P1ABX	Purified Ab WITHOUT BSA and Azide at 1.0mg/ml	100 ug

Applications	Tested Dilution	Note
Flow Cytometry (Flow)	1-2ug/million cells	
Immunofluorescence (IF)	1-3ug/ml	
Immunohistochemistry (IHC)	1-2ug/ml	30 min at RT. Staining of formalin-fixed tissues requires heating tissue sections in 10mM Tris with 1mM EDTA, pH 9.0, for 45 min at 95°C followed by cooling at RT for 20 minutes

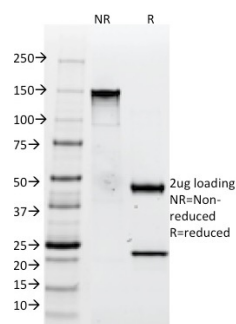
Product Details	
Clone	SPM319
Gene Name	TNC
Immunogen	Human breast carcinoma
Host	Mouse
Clonality	Monoclonal
Isotype / Light Chain	IgG1 / Kappa
Mol. Weight of Antigen	210kDa and 300kDa
Cellular Localization	Extracellular matrix, Extracellular space, Secreted
Species Reactivity	Human
Positive Control	Extracellular matrix in tonsil and blood vessels. Stroma of many tumors such as breast, squamous cell and lung carcinomas. Staining of normal fibroblasts serves as internal positive control.

*Optimal dilution for a specific application should be determined.

Product Images for Tenascin C (Stromal Marker for Epithelial Malignancy) Antibody



Formalin-fixed, paraffin-embedded human Lung Carcinoma stained with Tenascin C Mouse Monoclonal Antibody (SPM319).



SDS-PAGE Analysis of Purified Tenascin C Mouse Monoclonal Antibody (SPM319). Confirmation of Integrity and Purity of Antibody.

Specificity & Comments

In Western blotting, it reacts with two bands of ~MW of 210kDa and 300kDa, identified as two isoforms of Tenascin C. Specificity of this MAb is validated by sequential immunoprecipitation with a PAb against Tenascin C. Tenascin C is a multifunctional, disulfide-linked hexameric extracellular matrix glycoprotein expressed in association with mesenchymal epithelial interactions during development and in the neo-vasculature and stroma of undifferentiated tumors. In adults, it is restricted to certain epithelial-stromal interfaces and increases markedly in hyper-proliferative diseases and in stroma of many neoplasms, including gliomas, breast, squamous and lung carcinomas.

Limitations and Warranty

This antibody is available for research use only and is not approved for use in diagnosis. There are no warranties, expressed or implied, which extend beyond this description. Company is not liable for any personal injury or economic loss resulting from this product.

Supplied As

200ug/ml of Ab Purified from Bioreactor Concentrate by Protein A/G. Prepared in 10mM PBS with 0.05% BSA & 0.05% azide. Also available WITHOUT BSA & azide at 1.0mg/ml.

Storage and Stability

Antibody with azide - store at 2 to 8°C. Antibody without azide - store at -20 to -80°C. Antibody is stable for 24 months. Non-hazardous. No MSDS required.

Research Areas

Angiogenesis, Cancer, Cardiovascular, Neuroscience
