

CD54 / ICAM-1 Antibody

Mouse Monoclonal Antibody [Clone W-CAM-1; same as Wehi-CAM-1 or 1H4]

Catalog No	Format	Size
3383-MSM1-P0	Purified Ab with BSA and Azide at 200ug/ml	20 ug
3383-MSM1-P1	Purified Ab with BSA and Azide at 200ug/ml	100 ug
3383-MSM1-P1ABX	Purified Ab WITHOUT BSA and Azide at 1.0mg/ml	100 ug

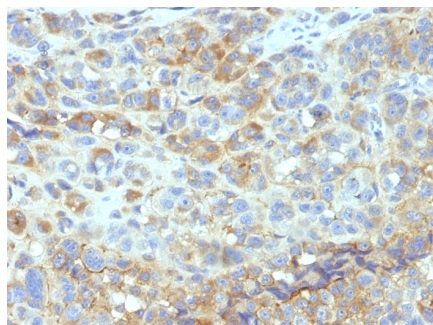
Applications	Tested Dillution	Note
Flow Cytometry (Flow)	1-2ug/million cells	
Immunofluorescence (IF)	1-3ug/ml	
Immunohistochemistry (IHC)	1-2ug/ml	30 min at RT. Staining of formalin-fixed tissues requires heating tissue sections in 10mM Tris with 1mM EDTA, pH 9.0, for 45 min at 95°C followed by cooling at RT for 20 minutes

Product Details

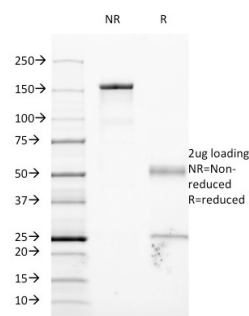
Clone	W-CAM-1; same as Wehi-CAM-1 or 1H4
Gene Name	ICAM1
Immunogen	Raji Burkitt lymphoma cells
Host	Mouse
Clonality	Monoclonal
Isotype / Light Chain	IgG2b / Kappa
Mol. Weight of Antigen	85-115kDa
Cellular Localization	Membrane
Species Reactivity	Human
Positive Control	HeLa or SW480 cells. Human tonsil., MOLT 4, Raji cells

*Optimal dilution for a specific application should be determined.

Product Images for CD54 / ICAM-1 Antibody



Formalin-fixed, paraffin-embedded human Melanoma stained with CD54 Monoclonal Antibody (W-CAM-1).



SDS-PAGE Analysis of Purified CD54 Monoclonal Antibody (W-CAM-1). Confirmation of Integrity and Purity of Antibody.

Specificity & Comments

Recognizes an 85-115kDa protein (variation with cell type), identified as intercellular adhesion molecule (ICAM-1) (Workshop IV). It has 7 potential N-linked glycosylation sites. ICAM-1 is a single chain glycoprotein of Ig supergene family, present on unstimulated endothelial cells (EC) and on a variety of other cell types including activated fibroblasts, EC, macrophages, and lymphocytes. ICAM-1 mediates cell adhesion by binding to integrins CD11a/CD18 (leukocyte adhesion molecule, LFA-1) and to CD11b/CD18 (Mac-1). This interaction enhances antigen-specific T-cell activation. ICAM-1 also binds to CD43 and to Plasmodium falciparum infected RBCs. W-CAM-1 MAb blocks aggregation of cell lines mediated by the ICAM-1 and blocks homotypic binding of Purified populations of activated T- and B-lymphocytes and also aggregation of mixed T- and B-cell blasts. It inhibits T-cell adhesion to normal human endothelial cells. Activation induced by cell-cell contact (mixed lymphocyte reaction, T-cell mediated B-cell activation) is significantly inhibited. This MAb blocks elements of both effector arms of immune system (cytotoxic cell function and Ig production).

Limitations and Warranty

This antibody is available for research use only and is not approved for use in diagnosis. There are no warranties, expressed or implied, which extend beyond this description. Company is not liable for any personal injury or economic loss resulting from this product.

Supplied As

200ug/ml of Ab Purified from Bioreactor Concentrate by Protein A/G. Prepared in 10mM PBS with 0.05% BSA & 0.05% azide. Also available WITHOUT BSA & azide at 1.0mg/ml.

Storage and Stability

Antibody with azide - store at 2 to 8°C. Antibody without azide - store at -20 to -80°C. Antibody is stable for 24 months. Non-hazardous. No MSDS required.

Research Areas

Cardiovascular, Hypoxia, Immunology, BBB VCAM-1 Signaling, Complement System, Cytokine Signaling, Endothelial Cell Marker
