

Recombinant IDH1-R132H (Isocitrate Dehydrogenase) Antibody

Rabbit Monoclonal Antibody [Clone IDH1/6806R]

Catalog No	Format	Size
3417-RBM6-P0	Purified Ab with BSA and Azide at 200ug/ml	20 ug
3417-RBM6-P1	Purified Ab with BSA and Azide at 200ug/ml	100 ug
3417-RBM6-P1ABX	Purified Ab WITHOUT BSA and Azide at 1.0mg/ml	100 ug

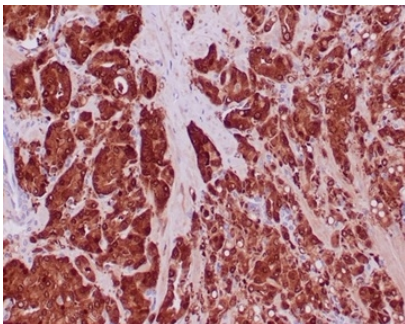
Applications	Tested Dillution	Note
Immunohistochemistry (IHC)	1-2ug/ml	30 min at RT. Staining of formalin-fixed tissues requires heating tissue sections in 10mM Tris with 1mM EDTA, pH 9.0, for 45 min at 95°C followed by cooling at RT for 20 minutes

Product Details

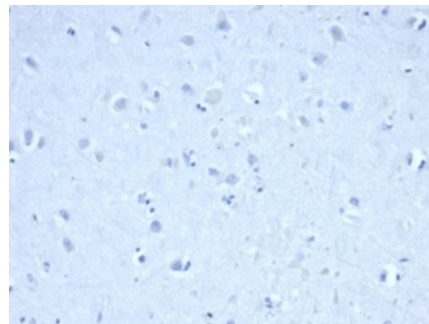
Clone	IDH1/6806R
Gene Name	IDH1
Immunogen	Recombinant fragment of human IDH1 protein (around aa 281-414) (exact sequence is proprietary)
Host	Rabbit
Clonality	Monoclonal
Isotype / Light Chain	IgG / Kappa
Mol. Weight of Antigen	45-47kDa
Cellular Localization	Cytoplasm, Cytosol, Peroxisome
Species Reactivity	Human
Positive Control	Human breast, colon or prostate carcinoma. HeLa, HepG2, HT29 or MCF7 cells.

*Optimal dilution for a specific application should be determined.

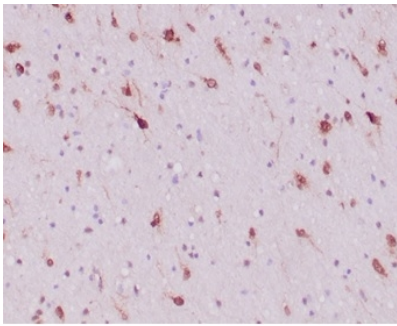
Product Images for Recombinant IDH1-R132H (Isocitrate Dehydrogenase) Antibody



FFPE prostate carcinoma with IDH1-R132H mutation stained with IDH1-R132H Recombinant Rabbit Monoclonal Antibody (IDH1/6806R).



IHC analysis of formalin-fixed, paraffin-embedded human cerebellum. Negative tissue control using IDH1/6806R at 2ug/ml in PBS for 30min RT. HIER: Tris/EDTA, pH9.0, 45min. 2°C: HRP-polymer, 30min. DAB, 5min.



FFPE human glioblastoma with IDH1-R132H mutation stained with IDH1-R132H Recombinant Rabbit Monoclonal Antibody (IDH1/6806R). HIER: Tris/EDTA, pH9.0, 45min. 2°C; HRP-polymer, 30min. DAB, 5min.

Specificity & Comments

IDH1 R132H antibody binds to IDH1-mutated protein, but does not bind the wild-type IDH1 protein. IDH1 R132H point mutations are frequently seen in World Health Organization grade II and III gliomas and are believed to constitute an early step in tumorigenesis. IDH1 R132H can be used as a diagnostic marker to help differentiate infiltrating gliomas from gliosis, and as a prognostic marker for gliomas and secondary glioblastoma multiforme. IDH1 R132H antibody shows strong cytoplasmic staining and weaker nuclear staining in tumor cells with the R132H-mutated peptide. Diffuse staining of the fibrillary tumor matrix is also seen.

Limitations and Warranty

This antibody is available for research use only and is not approved for use in diagnosis. There are no warranties, expressed or implied, which extend beyond this description. Company is not liable for any personal injury or economic loss resulting from this product.

Supplied As

200ug/ml of Ab purified from Bioreactor Concentrate by Protein A/G. Prepared in 1mM PBS with 0.05% BSA & 0.05% azide. Also available WITHOUT BSA & azide at 1.0mg/ml.

Storage and Stability

Antibody with azide - store at 2 to 8 °C. Antibody without azide - store at -20 to -80 °C. Antibody is stable for 24 months. Non-hazardous. No MSDS required.

Research Areas

Cardiovascular, Immunology, Infectious Disease, Nuclear Marker
