

## IgG (Immunoglobulin Gamma Heavy Chain) (B-Cell Marker) Antibody

Mouse Monoclonal Antibody [Clone IG217]

Catalog No	Format	Size
3500-MSM1-P0	Purified Ab with BSA and Azide at 200ug/ml	20 ug
3500-MSM1-P1	Purified Ab with BSA and Azide at 200ug/ml	100 ug
3500-MSM1-P1ABX	Purified Ab WITHOUT BSA and Azide at 1.0mg/ml	100 ug

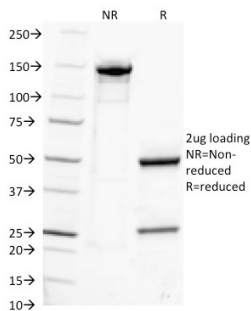
Applications	Tested Dillution	Note
Flow Cytometry (Flow)	1-2ug/million cells	
Immunofluorescence (IF)	1-3ug/ml	
Immunohistochemistry (IHC)	1-2ug/ml	30 min at RT. Staining of formalin-fixed tissues requires heating tissue sections in 10mM Tris with 1mM EDTA, pH 9.0, for 45 min at 95°C followed by cooling at RT for 20 minutes

### Product Details

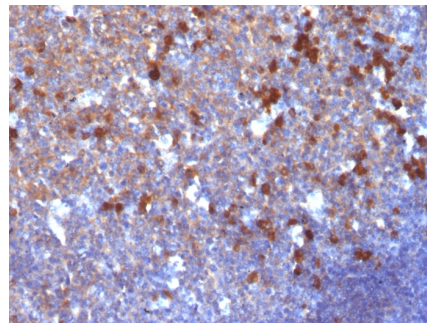
<b>Clone</b>	IG217
<b>Gene Name</b>	IGHG1
<b>Immunogen</b>	Purified human Ig Gamma Chain
<b>Host</b>	Mouse
<b>Clonality</b>	Monoclonal
<b>Isotype / Light Chain</b>	IgG1 / Kappa
<b>Mol. Weight of Antigen</b>	75kDa
<b>Cellular Localization</b>	Cell membrane, Secreted
<b>Species Reactivity</b>	Human
<b>Positive Control</b>	293T, Raji or hPBL cells. Tonsil or Spleen.

\*Optimal dilution for a specific application should be determined.

### Product Images for IgG (Immunoglobulin Gamma Heavy Chain) (B-Cell Marker) Antibody



SDS-PAGE Analysis of Purified IgG Monoclonal Antibody (IG217). Confirmation of Integrity and Purity of Antibody



Formalin-fixed, paraffin-embedded human Tonsil stained with IgG Monoclonal Antibody (IG217)

### Specificity & Comments

Recognizes a protein of 75kDa, identified as gamma heavy chain of human immunoglobulins. It reacts with all sub-classes of gamma chain of human immunoglobulins. It does not cross-react with alpha (IgA), mu (IgM), epsilon (IgE), or delta (IgD), heavy chains, T-cells, monocytes, granulocytes, or erythrocytes. This MAb is useful in the identification of leukemias, plasmacytomas, and certain non-Hodgkin's lymphomas. The most common feature of these malignancies is the restricted expression of a single heavy chain class. Demonstration of clonality in lymphoid infiltrates indicates that ~~the infiltrate is clonal and therefore malignant.~~

### Supplied As

200ug/ml of Ab Purified from Bioreactor Concentrate by Protein A/G. Prepared in 10mM PBS with 0.05% BSA & 0.05% azide. Also available WITHOUT BSA & azide at 1.0mg/ml.

### Storage and Stability

Antibody with azide - store at 2 to 8°C. Antibody without azide - store at -20 to -80°C. Antibody is stable for 24 months. Non-hazardous. No MSDS required.

## Limitations and Warranty

This antibody is available for research use only and is not approved for use in diagnosis. There are no warranties, expressed or implied, which extend beyond this description. Company is not liable for any personal injury or economic loss resulting from this product.

---