

## IRF3 Antibody

Mouse Monoclonal Antibody [Clone PCR-IRF3-1D11]

Catalog No	Format	Size
3661-MSM10-P0	Purified Ab with BSA and Azide at 200ug/ml	20 ug
3661-MSM10-P1	Purified Ab with BSA and Azide at 200ug/ml	100 ug
3661-MSM10-P1ABX	Purified Ab WITHOUT BSA and Azide at 1.0mg/ml	100 ug

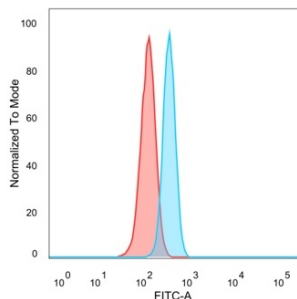
Applications	Tested Dillution	Note
Immunofluorescence (IF)	1-3ug/ml	
Western Blot (WB)	2-4ug/ml	

### Product Details

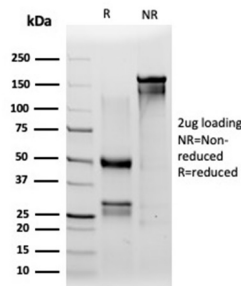
<b>Clone</b>	PCR-IRF3-1D11
<b>Gene Name</b>	IRF3
<b>Immunogen</b>	Recombinant full-length human IRF3 protein
<b>Host</b>	Mouse
<b>Clonality</b>	Monoclonal
<b>Isotype / Light Chain</b>	IgG1 / Kappa
<b>Mol. Weight of Antigen</b>	~50kDa
<b>Cellular Localization</b>	Cytoplasm, Mitochondrion, Nucleus
<b>Species Reactivity</b>	Human
<b>Positive Control</b>	HeLa, U87 or Ramos cells.

\*Optimal dilution for a specific application should be determined.

### Product Images for IRF3 Antibody



Flow Cytometric Analysis of PFA-fixed HeLa cells. IRF3 Mouse Monoclonal Antibody (PCR-IRF3-1D11) followed by goat anti-mouse IgG-CF488 (blue); unstained cells (red).



SDS-PAGE Analysis of Purified IRF3 Mouse Monoclonal Antibody (PCR-IRF3-1D11). Confirmation of Purity and Integrity of Antibody.

### **Specificity & Comments**

Interferon regulatory factor-1 (IRF-1) and IRF-2 have been identified as novel DNA-binding factors that function as regulators of both type I interferon (interferon- $\alpha$  and  $\beta$ ) and interferon-inducible genes. The two factors are structurally related, particularly in their N-terminal regions, which confer DNA binding specificity. In addition, both bind to the same sequence within the promoters of interferon- $\alpha$  and interferon- $\beta$  genes. IRF-1 functions as an activator of interferon transcription, while IRF-2 binds to the same cis elements and represses IRF-1 action. IRF-1 and IRF-2 have been reported to act in a mutually antagonistic manner in regulating cell growth; overexpression of the repressor IRF-2 leads to cell transformation while concomitant overexpression of IRF-1 causes reversion. IRF-1 and IRF-2 are members of a larger family of DNA binding proteins that includes IRF-3, IRF-4, IRF-5, IRF-6, IRF-7, ISGF-3 $\beta$ 48 and IFN consensus sequence-binding protein (ICSBP).

---

### **Limitations and Warranty**

This antibody is available for research use only and is not approved for use in diagnosis. There are no warranties, expressed or implied, which extend beyond this description. Company is not liable for any personal injury or economic loss resulting from this product.

---

### **Supplied As**

200ug/ml of Ab purified from Bioreactor Concentrate by Protein A/G. Prepared in 10mM PBS with 0.05% BSA & 0.05% azide. Also available WITHOUT BSA & azide at 1.0mg/ml.

---

### **Storage and Stability**

Antibody with azide - store at 2 to 8 °C. Antibody without azide - store at -20 to -80 °C. Antibody is stable for 24 months. Non-hazardous. No MSDS required.

---

### **Research Areas**

Cardiovascular, Cytokine Signaling, Immunology, Infectious Disease

---