

## Androgen Receptor (Marker of Androgen Dependence) Antibody

Mouse Monoclonal Antibody [Clone AR441]

Catalog No	Format	Size
367-MSM1-P0	Purified Ab with BSA and Azide at 200ug/ml	20 ug
367-MSM1-P1	Purified Ab with BSA and Azide at 200ug/ml	100 ug
367-MSM1-P1ABX	Purified Ab WITHOUT BSA and Azide at 1.0mg/ml	100 ug

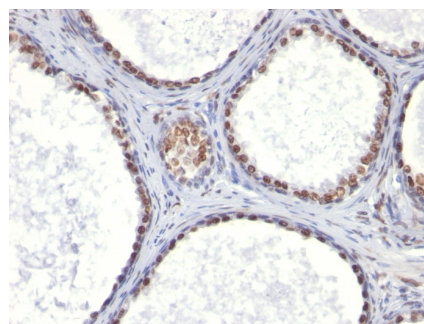
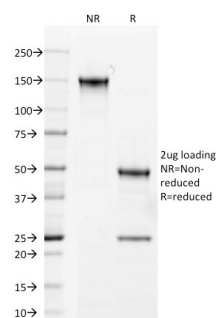
Applications	Tested Dillution	Note
Flow Cytometry (Flow)	1-2ug/million cells	
Immunofluorescence (IF)	1-3ug/ml	
Immunohistochemistry (IHC)	1-2ug/ml	30 min at RT. Staining of formalin-fixed tissues requires heating tissue sections in 10mM Tris with 1mM EDTA, pH 9.0, for 45 min at 95°C followed by cooling at RT for 20 minutes

### Product Details

<b>Clone</b>	AR441
<b>Gene Name</b>	AR
<b>Immunogen</b>	A synthetic peptide, aa 302-318 (STEDTAEYSPFKGGYTK) of human AR
<b>Host</b>	Mouse
<b>Clonality</b>	Monoclonal
<b>Isotype / Light Chain</b>	IgG1 / Kappa
<b>Mol. Weight of Antigen</b>	110kDa
<b>Cellular Localization</b>	Cytoplasm, Nucleus
<b>Species Reactivity</b>	Human
<b>Positive Control</b>	LNCap cells. Prostate carcinoma.

\*Optimal dilution for a specific application should be determined.

### Product Images for Androgen Receptor (Marker of Androgen Dependence) Antibody



SDS-PAGE Analysis of Purified Androgen Receptor Mouse Monoclonal Antibody (AR441). Confirmation of Integrity and Purity of Antibody.

Formalin-fixed, paraffin-embedded human Prostate Carcinoma stained with Androgen Receptor Mouse Monoclonal Antibody (AR441).

### **Specificity & Comments**

Recognizes a protein of 110kDa, which is identified as androgen receptor (AR). It reacts with full length, and the newly described A form of the receptor. It does not cross react with estrogen, progesterone, or glucocorticoid receptors. The expression of AR is reportedly inversely correlated with histologic grade i.e. well differentiated prostate tumors show higher expression than the poorly differentiated tumors. In prostate cancer, AR has been proposed, as a marker of hormone-responsiveness and thus it may be useful in identifying patients likely to benefit from anti-androgen therapy. Anti-androgen receptor has been useful clinically in differentiating morpheaform basal cell carcinoma (mBCC) from desmoplastic trichoepithelioma (DTE) in the skin. This MAb is superb for staining of formalin/paraffin tissues.

---

### **Limitations and Warranty**

This antibody is available for research use only and is not approved for use in diagnosis. There are no warranties, expressed or implied, which extend beyond this description. Company is not liable for any personal injury or economic loss resulting from this product.

---

### **Supplied As**

200ug/ml of Ab Purified from Bioreactor Concentrate by Protein A/G. Prepared in 10mM PBS with 0.05% BSA & 0.05% azide. Also available WITHOUT BSA & azide at 1.0mg/ml.

---

### **Storage and Stability**

Antibody with azide - store at 2 to 8°C. Antibody without azide - store at -20 to -80°C. Antibody is stable for 24 months. Non-hazardous. No MSDS required.

---

### **Research Areas**

Cancer, AKT Signaling, Signal Transduction, Transcription Factors

---