

Cytokeratin 3 (KRT3) (Corneal Epithelial Marker) Antibody

Mouse Monoclonal Antibody [Clone KRT3/2542]

Catalog No	Format	Size
3850-MSM2-P0	Purified Ab with BSA and Azide at 200ug/ml	20 ug
3850-MSM2-P1	Purified Ab with BSA and Azide at 200ug/ml	100 ug
3850-MSM2-P1ABX	Purified Ab WITHOUT BSA and Azide at 1.0mg/ml	100 ug

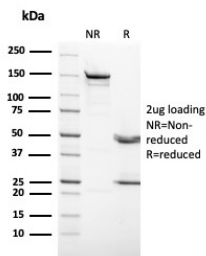
Applications	Tested Dillution	Note
Immunohistochemistry (IHC)	1-2ug/ml	30 min at RT. Staining of formalin-fixed tissues requires heating tissue sections in 10mM Tris with 1mM EDTA, pH 9.0, for 45 min at 95°C followed by cooling at RT for 20 minutes
Western Blot (WB)	2-4ug/ml	

Product Details

Clone	KRT3/2542
Gene Name	KRT3
Immunogen	Tissue, cells or virus corresponding to Rabbit Cytokeratin 3/CK-3. Rabbit corneal epithelial keratin.
Host	Mouse
Clonality	Monoclonal
Isotype / Light Chain	IgG1 / Kappa
Mol. Weight of Antigen	65kDa
Species Reactivity	Bovine, Human, Rabbit
Positive Control	A431 cells. Human cornea.

*Optimal dilution for a specific application should be determined.

Product Images for Cytokeratin 3 (KRT3) (Corneal Epithelial Marker) Antibody



SDS-PAGE Analysis. Purified KRT3 Mouse Monoclonal Antibody (KRT3/2542). Confirmation of Purity and Integrity of Antibody.

Specificity & Comments

The protein encoded by this gene is a member of the keratin gene family. The type II cytokeratins consist of basic or neutral proteins, which are arranged in pairs of heterotypic keratin chains co-expressed during differentiation of simple and stratified epithelial tissues. This type II cytokeratin is specifically expressed in the corneal epithelium with family member KRT12 and mutations in these genes have been associated with Meesmann's Corneal Dystrophy. KRT3/2542 recognizes the 64kD polypeptide/keratin K3 (cytokeratin 3) of rabbit corneal epithelium and keratin K76 (cytokeratin K2p) of palate epithelium. As such represents an excellent marker for studying corneal epithelial-type differentiation. Also recognizes bovine snout and lip epithelium, as well as a rabbit corneal cell line.

Supplied As

200ug/ml of Ab purified from Bioreactor Concentrate by Protein A/G. Prepared in 10mM PBS with 0.05% BSA & 0.05% azide. Also available WITHOUT BSA & azide at 1.0mg/ml.

Storage and Stability

Antibody with azide - store at 2 to 8 °C. Antibody without azide - store at -20 to -80 °C. Antibody is stable for 24 months. Non-hazardous. No MSDS required.

Limitations and Warranty

This antibody is available for research use only and is not approved for use in diagnosis. There are no warranties, expressed or implied, which extend beyond this description. Company is not liable for any personal injury or economic loss resulting from this product.
