

## Cytokeratin 10 (Suprabasal Epithelial Marker) Antibody

Mouse Monoclonal Antibody [Clone DE-K10]

Catalog No	Format	Size
3858-MSM3-P0	Purified Ab with BSA and Azide at 200ug/ml	20 ug
3858-MSM3-P1	Purified Ab with BSA and Azide at 200ug/ml	100 ug
3858-MSM3-P1ABX	Purified Ab WITHOUT BSA and Azide at 1.0mg/ml	100 ug

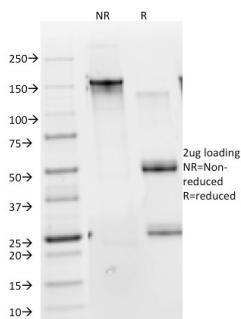
Applications	Tested Dillution	Note
Immunohistochemistry (IHC)	1-2ug/ml	30 min at RT. Staining of formalin-fixed tissues requires heating tissue sections in 10mM Tris with 1mM EDTA, pH 9.0, for 45 min at 95°C followed by cooling at RT for 20 minutes

### Product Details

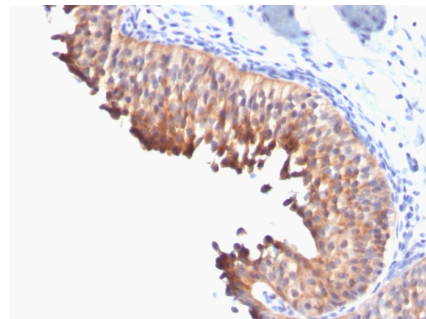
<b>Clone</b>	DE-K10
<b>Gene Name</b>	KRT10
<b>Immunogen</b>	Cytoskeletal preparation extracted from human ectocervical epithelium
<b>Host</b>	Mouse
<b>Clonality</b>	Monoclonal
<b>Isotype / Light Chain</b>	IgG1 / Kappa
<b>Mol. Weight of Antigen</b>	56.5kDa
<b>Cellular Localization</b>	Cell surface, Extracellular space, Secreted
<b>Species Reactivity</b>	Cat, Dog, Human
<b>Positive Control</b>	A431, HeLa, MCF7 cells. Esophagus or tonsil.

\*Optimal dilution for a specific application should be determined.

### Product Images for Cytokeratin 10 (Suprabasal Epithelial Marker) Antibody



SDS-PAGE Analysis of Purified Cytokeratin 10 Monoclonal Antibody (DE-K10). Confirmation of Integrity and Purity of Antibody



Formalin-fixed, paraffin-embedded human Bladder Carcinoma stained with Cytokeratin 10 Monoclonal Antibody (DE-K10).

### Specificity & Comments

This MAbs recognizes a protein of 56.5kDa, identified as cytokeratin 10 (CK10). CK10 is expressed in all suprabasal layers of the epidermis. In the epidermis, expression of CK10 strictly parallels the extent of differentiation; it is absent in the basal layer, appears in the first suprabasal layers and increases in concentration towards the granular layer. However, CK10 is rarely detected in early stages of vulvar squamous carcinomas (tumors less than 2 cm, clinical stage I) regardless of the tumor grade. In larger and more advanced tumors (greater than 2 cm, clinical stages II and III), CK10 is detected very frequently. Expression of CK10 is related to maturation of malignant keratinocytes, being preferentially detected in more-differentiated parts.

### Supplied As

200ug/ml of Ab Purified from Bioreactor Concentrate by Protein A/G. Prepared in 10mM PBS with 0.05% BSA & 0.05% azide. Also available WITHOUT BSA & azide at 1.0mg/ml.

### Storage and Stability

Antibody with azide - store at 2 to 8°C. Antibody without azide - store at -20 to -80°C. Antibody is stable for 24 months. Non-hazardous. No MSDS required.

### Research Areas

Autophagy, Developmental Biology

## Limitations and Warranty

This antibody is available for research use only and is not approved for use in diagnosis. There are no warranties, expressed or implied, which extend beyond this description. Company is not liable for any personal injury or economic loss resulting from this product.

---