

## Recombinant Cytokeratin 16 (KRT16) (Suprabasal Keratinocyte Marker) Antibody

Mouse Monoclonal Antibody [Clone rKRT16/1714]

Catalog No	Format	Size
3868-MSM4-P0	Purified Ab with BSA and Azide at 200ug/ml	20 ug
3868-MSM4-P1	Purified Ab with BSA and Azide at 200ug/ml	100 ug
3868-MSM4-P1ABX	Purified Ab WITHOUT BSA and Azide at 1.0mg/ml	100 ug

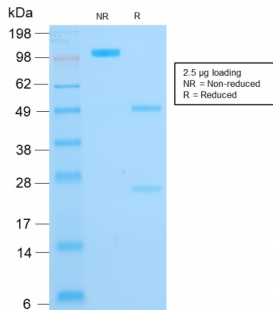
Applications	Tested Dillution	Note
Immunohistochemistry (IHC)	1-2ug/ml	30 min at RT. Staining of formalin-fixed tissues requires heating tissue sections in 10mM Tris with 1mM EDTA, pH 9.0, for 45 min at 95°C followed by cooling at RT for 20 minutes

### Product Details

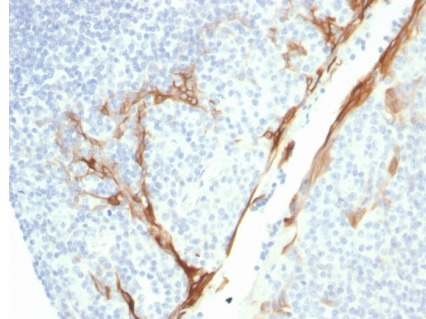
<b>Clone</b>	rKRT16/1714
<b>Gene Name</b>	KRT16
<b>Immunogen</b>	Recombinant fragment from the C-terminal of human Cytokeratin 16
<b>Host</b>	Mouse
<b>Clonality</b>	Monoclonal
<b>Isotype / Light Chain</b>	IgG1 / Kappa
<b>Mol. Weight of Antigen</b>	48kDa
<b>Species Reactivity</b>	Human
<b>Positive Control</b>	HeLa cells. Tonsil, Skin. Bladder or Cervix.

\*Optimal dilution for a specific application should be determined.

### Product Images for Recombinant Cytokeratin 16 (KRT16) (Suprabasal Keratinocyte Marker) Antibody



SDS-PAGE Analysis of Purified CK16 Mouse Recombinant Monoclonal Antibody (rKRT16/1714). Confirmation of Integrity and Purity of Antibody.



Formalin-fixed, paraffin-embedded human Tonsil stained with CK16 Mouse Recombinant Monoclonal Antibody (rKRT16/1714).

### Specificity & Comments

Cytokeratins are a family of intermediate filament proteins that assemble into filaments through forming heterodimers of one type I Cytokeratins (Cytokeratins 9 to 23) and one type II Cytokeratins (keratins 1 to 8). The cytokeratin proteins play a critical role in differentiation, as well as tissue specialization and function, to maintain the overall structural integrity of epithelial cells. Cytokeratins are also useful markers in identifying the origin of metastatic tumors. Cytokeratin 16 is expressed in benign stratified squamous epithelium and squamous cell carcinoma of the head and neck, as well as luminal cells of mammary gland and sweat ducts. It is absent in non-invasive breast carcinomas and normal breast tissue.

### Supplied As

200ug/ml of Ab Purified from Bioreactor Concentrate by Protein A/G. Prepared in 10mM PBS with 0.05% BSA & 0.05% azide. Also available WITHOUT BSA & azide at 1.0mg/ml.

### Storage and Stability

Antibody with azide - store at 2 to 8°C. Antibody without azide - store at -20 to -80°C. Antibody is stable for 24 months. Non-hazardous. No MSDS required.

### Research Areas

Autophagy, Developmental Biology

## Limitations and Warranty

This antibody is available for research use only and is not approved for use in diagnosis. There are no warranties, expressed or implied, which extend beyond this description. Company is not liable for any personal injury or economic loss resulting from this product.

---