

BOLA3 (Transcription Factor) Antibody

Mouse Monoclonal Antibody [Clone PCR-P-BOLA3-1A5]

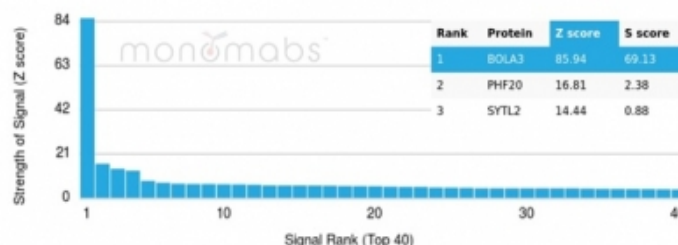
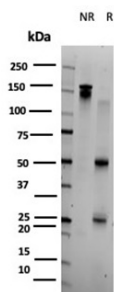
Catalog No	Format	Size
388962-MSM1-P0	Purified Ab with BSA and Azide at 200ug/ml	20 ug
388962-MSM1-P1	Purified Ab with BSA and Azide at 200ug/ml	100 ug
388962-MSM1-P1ABX	Purified Ab WITHOUT BSA and Azide at 1.0mg/ml	100 ug

Applications	Tested Dillution	Note
Flow Cytometry (Flow)	1-2ug/million cells	

Product Details	
Clone	PCR-P-BOLA3-1A5
Gene Name	BOLA3
Immunogen	Recombinant fragment (around aa1-103) of human BOLA3 protein (exact sequence is proprietary)
Host	Mouse
Clonality	Monoclonal
Isotype / Light Chain	IgG1
Mol. Weight of Antigen	12.11kDa
Cellular Localization	Mitochondrion
Species Reactivity	Human
Positive Control	HeLa cells.

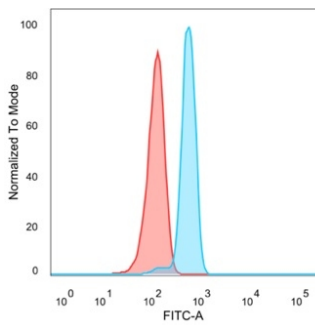
*Optimal dilution for a specific application should be determined.

Product Images for BOLA3 (Transcription Factor) Antibody



SDS-PAGE Analysis BOLA3 Mouse Monoclonal Antibody (PCR-P-BOLA3-1A5). Confirmation of Purity and Integrity of Antibody.

Analysis of Protein Array containing more than 19,000 full-length human proteins using BOLA3-Monospecific Mouse Monoclonal Antibody (PCR-P-BOLA3-1A5). Z- and S-Score: The Z-score represents the strength of a signal that a monoclonal antibody (MAb) (in combination with a fluorescently-tagged anti-IgG secondary antibody) produces when binding to a particular protein on the HuProt™ array. Z-scores are described in units of standard deviations (SD's) above the mean value of all signals generated on that array. If targets on HuProt™ are arranged in descending order of the Z-score, the S-score is the difference (also in units of SD's) between the Z-score. S-score therefore represents the relative target specificity of a MAb to its intended target. A MAb is considered to specific to its intended target, if the MAb has an S-score of at least 2.5. For example, if a MAb binds to protein X with a Z-score of 43 and to protein Y with a Z-score of 14, then the S-score for the binding of that MAb to protein X is equal to 29.



Flow cytometric analysis of PFA-fixed HeLa cells. BOLA3 Mouse Monoclonal Antibody (PCRP-BOLA3-1A5) followed by goat anti-mouse IgG-CF488 (blue); isotype control (red).

Specificity & Comments

Acts as a mitochondrial iron-sulfur (Fe-S) cluster assembly factor that facilitates (Fe-S) cluster insertion into a subset of mitochondrial proteins. Probably acts together with NFU1. Localizes to mitochondria, in agreement with other members of the family.

Supplied As

200ug/ml of Ab purified from Bioreactor Concentrate by Protein A/G. Prepared in 10mM PBS with 0.05% BSA & 0.05% azide. Also available WITHOUT BSA & azide at 1.0mg/ml.

Storage and Stability

Antibody with azide - store at 2 to 8 °C. Antibody without azide - store at -20 to -80 °C. Antibody is stable for 24 months. Non-hazardous. No MSDS required.

Research Areas

Mitochondria Marker, Nuclear Marker

Limitations and Warranty

This antibody is available for research use only and is not approved for use in diagnosis. There are no warranties, expressed or implied, which extend beyond this description. Company is not liable for any personal injury or economic loss resulting from this product.
