

CD171 / NCAM-L1 (L1 Cell Adhesion Molecule) Antibody

Mouse Monoclonal Antibody [Clone SPM275]

Catalog No	Format	Size
3897-MSM1X-P0	Purified Ab with BSA and Azide at 200ug/ml	20 ug
3897-MSM1X-P1	Purified Ab with BSA and Azide at 200ug/ml	100 ug
3897-MSM1X-P1ABX	Purified Ab WITHOUT BSA and Azide at 1.0mg/ml	100 ug

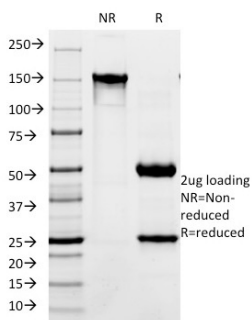
Applications	Tested Dillution	Note
Flow Cytometry (Flow)	1-2ug/million cells	
Immunofluorescence (IF)	1-3ug/ml	
Immunohistochemistry (IHC)	1-2ug/ml	30 min at RT. Staining of formalin-fixed tissues requires heating tissue sections in 10mM Tris with 1mM EDTA, pH 9.0, for 45 min at 95°C followed by cooling at RT for 20 minutes

Product Details

Clone	SPM275
Gene Name	L1CAM
Immunogen	Homogenous suspension of 16-week human fetal brain
Host	Mouse
Clonality	Monoclonal
Isotype / Light Chain	IgG1 / Kappa
Mol. Weight of Antigen	220-240kDa
Cellular Localization	Axon, Cell membrane, Cell projection, Dendrite, Growth cone
Species Reactivity	Human
Positive Control	Neuroblastomas or Schwannomas.

*Optimal dilution for a specific application should be determined.

Product Images for CD171 / NCAM-L1 (L1 Cell Adhesion Molecule) Antibody



SDS-PAGE Analysis of Purified CD171 Mouse Monoclonal Antibody (SPM275).
Confirmation of Integrity and Purity of Antibody.

Specificity & Comments

Recognizes a cell surface protein of 220-240kDa, identified as L1 cell adhesion molecule. The L1CAM gene, which is located in Xq28, is involved in three distinct conditions: 1) HSAS (hydrocephalus-stenosis of the aqueduct of Sylvius); 2) MASA (mental retardation, aphasia, shuffling gait, and adducted thumbs); and 3) SPG1 (spastic paraplegia). The L1, neural cell adhesion molecule (L1CAM) also plays an important role in axon growth, fasciculation, and neural migration as well as in mediating neuronal differentiation. Expression of L1 protein is restricted to tissues arising from neuroectoderm. This MAb is useful in the identification of primitive neuroectodermal tumors. It binds to tumors of neuroectodermal and glial origin e.g. neuroblastoma and Schwannomas. It does not bind to pediatric or adult brain.

Limitations and Warranty

This antibody is available for research use only and is not approved for use in diagnosis. There are no warranties, expressed or implied, which extend beyond this description. Company is not liable for any personal injury or economic loss resulting from this product.

Supplied As

200ug/ml of Ab Purified from Bioreactor Concentrate by Protein A/G. Prepared in 10mM PBS with 0.05% BSA & 0.05% azide. Also available WITHOUT BSA & azide at 1.0mg/ml.

Storage and Stability

Antibody with azide - store at 2 to 8°C. Antibody without azide - store at -20 to -80°C. Antibody is stable for 24 months. Non-hazardous. No MSDS required.

Research Areas

Autophagy, Cardiovascular, Developmental Biology, Neuroscience
