

Lymphocyte Specific Protein 1 (LSP1) / pp52 Antibody

Mouse Monoclonal Antibody [Clone LSP1/3042]

Catalog No	Format	Size
4046-MSM2-P0	Purified Ab with BSA and Azide at 200ug/ml	20 ug
4046-MSM2-P1	Purified Ab with BSA and Azide at 200ug/ml	100 ug
4046-MSM2-P1ABX	Purified Ab WITHOUT BSA and Azide at 1.0mg/ml	100 ug

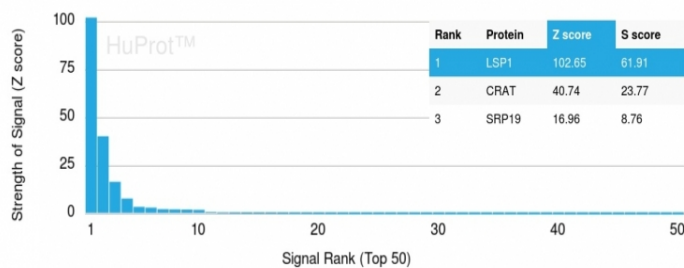
Applications	Tested Dillution	Note
--------------	------------------	------

Product Details

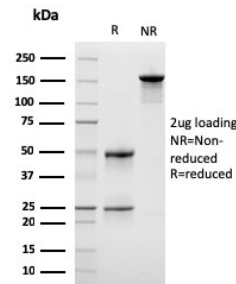
Clone	LSP1/3042
Gene Name	LSP1
Immunogen	Recombinant fragment of human LSP1 protein (around aa174-278) (exact sequence is proprietary)
Host	Mouse
Clonality	Monoclonal
Isotype / Light Chain	IgG1 / Kappa
Mol. Weight of Antigen	52kDa
Cellular Localization	Cell membrane
Species Reactivity	Human
Positive Control	Colon, Human tonsil, spleen or Hodgkin's lymphoma (IHC-P).

*Optimal dilution for a specific application should be determined.

Product Images for Lymphocyte Specific Protein 1 (LSP1) / pp52 Antibody



Analysis of Protein Array containing more than 19,000 full-length human proteins using LSP1 Mouse Monoclonal Antibody (LSP1/3042). Z- and S- Score: The Z-score represents the strength of a signal that a monoclonal antibody (MAb) (in combination with a fluorescently-tagged anti-IgG secondary antibody) produces when binding to a particular protein on the HuProt™ array. Z-scores are described in units of standard deviations (SD's) above the mean value of all signals generated on that array. If targets on HuProt™ are arranged in descending order of the Z-score, the S-score is the difference (also in units of SD's) between the Z-score. S-score therefore represents the relative target specificity of a MAb to its intended target. A MAb is considered to specific to its intended target, if the MAb has an S-score of at least 2.5. For example, if a MAb binds to protein X with a Z-score of 43 and to protein Y with a Z-score of 14, then the S-score for the binding of that MAb to protein X is equal to 29.



SDS-PAGE Analysis of Purified Monospecific Mouse Monoclonal Antibody to LSP1 (LSP1/3042). Confirmation of Purity and Integrity of Antibody.

Specificity & Comments

LSP1 is a hematopoietic-expressed gene that encodes an F-actin-binding, leukocyte-specific (including B and T lymphocytes, granulocytes and macrophages), phosphoprotein. However, mRNA splice variants that do not encode the lympho-specific protein are expressed from this gene in nonlymphoid cell lines as well (myocytes, stromal cells and fibroblasts), suggesting pp52 has a divergent role in signal transduction. The pp52 (LSP1) locus maps to human chromosome 11p15.5, which is implicated in tumor-related chromosomal translocations found in chronic lymphocytic leukemia. The pp52 promoter contains key elements that control transcriptional activity including an initiator specifying the unique 5' terminus of pp52 mRNA, tandem pairs of Ets and SP1 motifs, and a single C/EBP motif. LSP1 binds the cytoskeleton and has been implicated in affecting cytoskeletal remodeling in a variety of leukocyte functions, including cell motility and chemotaxis.

Limitations and Warranty

This antibody is available for research use only and is not approved for use in diagnosis. There are no warranties, expressed or implied, which extend beyond this description. Company is not liable for any personal injury or economic loss resulting from this product.

Supplied As

200ug/ml of Ab Purified from Bioreactor Concentrate by Protein A/G. Prepared in 10mM PBS with 0.05% BSA & 0.05% azide. Also available WITHOUT BSA & azide at 1.0mg/ml.

Storage and Stability

Antibody with azide - store at 2 to 8°C. Antibody without azide - store at -20 to -80°C. Antibody is stable for 24 months. Non-hazardous. No MSDS required.

Research Areas

Cardiovascular
