

Recombinant TACSTD2 / TROP2 (Epithelial Marker) Antibody

Rabbit Monoclonal Antibody [Clone TACSTD2/6396R]

Catalog No	Format	Size
4070-RBM6-P0	Purified Ab with BSA and Azide at 200ug/ml	20 ug
4070-RBM6-P1	Purified Ab with BSA and Azide at 200ug/ml	100 ug
4070-RBM6-P1ABX	Purified Ab WITHOUT BSA and Azide at 1.0mg/ml	100 ug

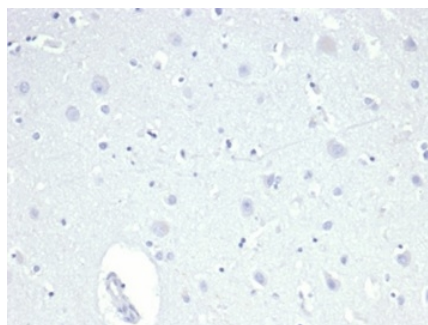
Applications	Tested Dillution	Note
Immunohistochemistry (IHC)	1-2ug/ml	30 min at RT. Staining of formalin-fixed tissues requires heating tissue sections in 10mM Tris with 1mM EDTA, pH 9.0, for 45 min at 95°C followed by cooling at RT for 20 minutes
Western Blot (WB)	2-4ug/ml	

Product Details

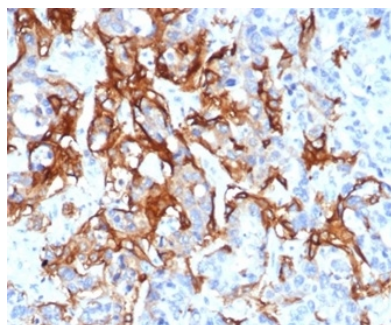
Clone	TACSTD2/6396R
Gene Name	TACSTD2
Immunogen	Recombinant fragment of human TACSTD2 protein (around aa 31-274) (exact sequence is proprietary)
Host	Rabbit
Clonality	Monoclonal
Isotype / Light Chain	IgG / Kappa
Mol. Weight of Antigen	40kDa
Cellular Localization	Membrane
Species Reactivity	Human
Positive Control	A-431, MCF7, HT29 cells. Human breast or colon carcinoma.

**Optimal dilution for a specific application should be determined.*

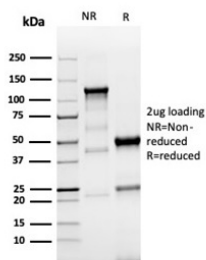
Product Images for Recombinant TACSTD2 / TROP2 (Epithelial Marker) Antibody



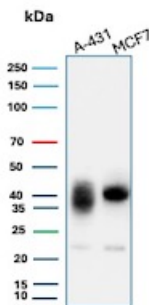
IHC analysis of formalin-fixed, paraffin-embedded human brain. Negative tissue control using TACSTD2/6396R at 2ug/ml in PBS for 30min RT. HIER: Tris/EDTA, pH9.0, 45min. 2°C: HRP-polymer, 30min. DAB, 5min.



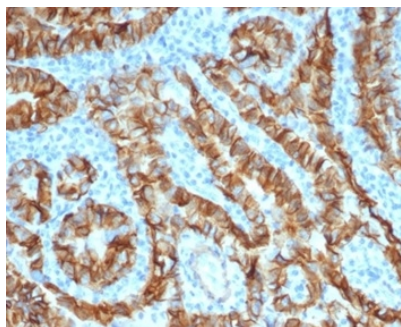
Formalin-fixed, paraffin-embedded human liver in colon carcinoma stained with TACSTD2 Recombinant Rabbit Monoclonal Antibody (TACSTD2/6396R).



SDS-PAGE Analysis of Purified TACSTD2 Recombinant Rabbit Monoclonal (TACSTD2/6396R). Confirmation of Purity and Integrity of Antibody.



Western blot analysis of A-431 and MCF7 cell lysates using TACSTD2 /TROP2 (Epithelial Marker) Rabbit Recombinant Monoclonal Antibody (TACSTD2/6396R).



Formalin-fixed, paraffin-embedded human thyroid carcinoma stained with TACSTD2 Recombinant Rabbit Monoclonal Antibody (TACSTD2/6396R).

Specificity & Comments

TACSTD2 is a cell surface glycoprotein receptor. It is a single pass type I membrane protein containing one thyroglobulin type-1 domain, an epidermal growth factor-like repeat, a phosphatidylinositol binding site and tyrosine phosphorylation sites near the C-terminus. It plays a role in transducing intracellular calcium signals. It is expressed in trophoblast cells, cornea and multi-stratified epithelia. It is also highly expressed in several types of tumors and is involved in regulating the growth of carcinoma cells.

Limitations and Warranty

This antibody is available for research use only and is not approved for use in diagnosis. There are no warranties, expressed or implied, which extend beyond this description. Company is not liable for any personal injury or economic loss resulting from this product.

Supplied As

200ug/ml of Ab purified from Bioreactor Concentrate by Protein A/G. Prepared in 10mM PBS with 0.05% BSA & 0.05% azide. Also available WITHOUT BSA & azide at 1.0mg/ml.

Storage and Stability

Antibody with azide - store at 2 to 8 °C. Antibody without azide - store at -20 to -80 °C. Antibody is stable for 24 months. Non-hazardous. No MSDS required.